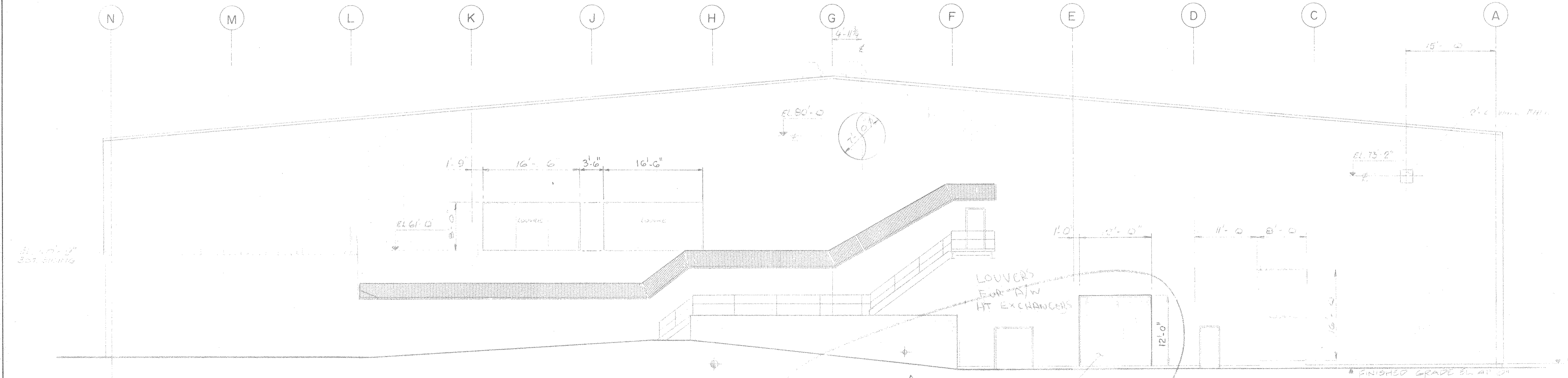


ELEVATION - A

- GREY
- SILVER
- RED



ELEVATION - B



- SIGN DETAIL -
LOCATION ON SIDING TO BE DETERMINED
LATER BY OWNER.

| NO. | REVISION | DATE | BY |
|-----|-------------------------------------------------------------------|-----------|-----|
| 2 | ORIGINAL TRANSFERRED TO C.S.I. | NOV 19/86 | KL |
| 1 | DOOR DELETED & REMOVABLE PANEL RELOCATED. ISSUED FOR CONSTRUCTION | OCT 9/86 | J'S |
| 0 | ISSUED FOR REVIEW & CLARIFICATION REQUIRED | 2/17/86 | J'S |
| 0 | ISSUED FOR COMMENTS | 4/1/86 | J'S |

TEMPORARY PERMIT NO. 771
TO PRACTICE ENGINEERING IN
THE STATE OF MARYLAND

W.P. LONDON AND ASSOCIATES LIMITED
CONSULTING ENGINEERS
NIAGARA FALLS

HARFORD COUNTY RESOURCE RECOVERY FACILITY - HARFORD COUNTY, MARYLAND
ARCHITECTURAL
ELEVATIONS (A) & (B)

Consumat Systems, Inc.
RICHMOND, VIRGINIA U.S.A.

| | | |
|--------------------|------------|--------------------|
| SCALE 1/8" = 1'-0" | DRAWN D.G. | DRAWING NO. |
| DATE AUG 10 1986 | CHK. J.S. | 7624-0000-44DI-005 |
| DO NOT SCALE | APPR. J.S. | SHEET OF |