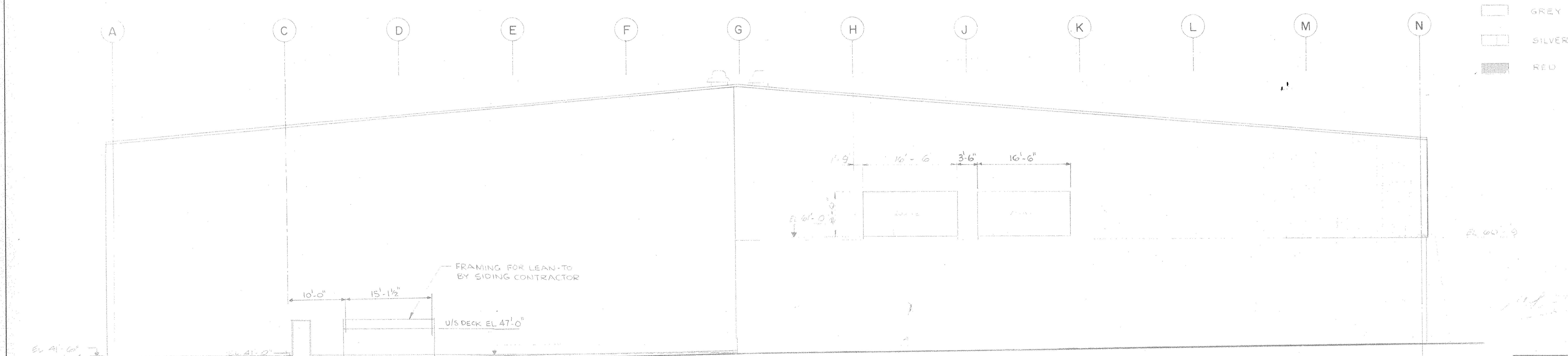


ELEVATION C



ELEVATION D

- GREY
- SILVER
- RED


NO.	REVISION	DATE	BY
2	ORIGINAL TRANSFERRED TO C.S.I.	NOV 19/86	KL
1	LOWERS FOR VENTILATION REPLACED BY FANS ISSUED FOR CONSTRUCTION	OCT 20/86	J.S.
0	ISSUED FOR COMMENTS		

TEMPORARY PERMIT NO. 771
TO PRACTICE ENGINEERING IN
THE STATE OF MARYLAND

W.P. LONDON AND ASSOCIATES LIMITED
CONSULTING ENGINEERS
NIAGARA FALLS

HARFORD COUNTY RESOURCE RECOVERY FACILITY - HARFORD COUNTY, MARYLAND

ARCHITECTURAL
ELEVATIONS (D) & (C)



Consumat Systems, Inc.
RICHMOND, VIRGINIA U.S.A.

SCALE 1/8" = 1'-0"

DATE AUG 20 1986

DO NOT SCALE

DRAWN D.G.

CHK. J.S.

APPR.

DRAWING NO.

7624-0000-4401-005

SHEET OF