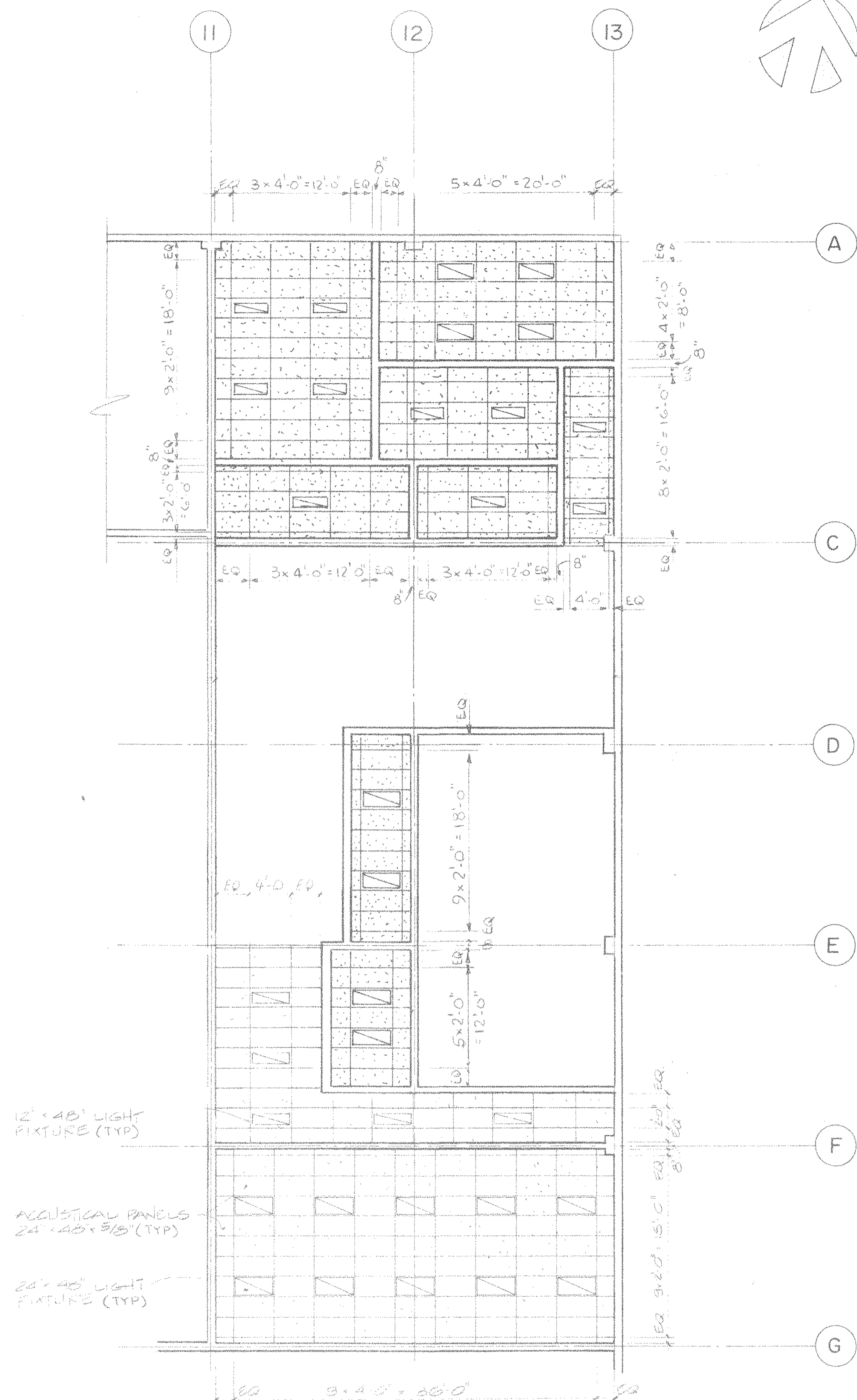


WASHROOMS, LOCKER ROOMS & LUNCH ROOM PLAN
SCALE 1/4" = 1'-0"



REFLECTED CEILING PLAN
SCALE 1/8" = 1'-0"

NOTE:


FOR INFORMATION ON INSTALLATION AND TYPE OF CEILING SEE GENERAL CONSTRUCTION CONTRACT SECTION 09510

NO.	REVISION	DATE	BY
2	ORIGINAL TRANSFERRED TO C.S.I.	NOV 19/86	KL
1	GENERAL REVISION ISSUED FOR CONSTRUCTION.	OCT 31/86	JS
0	ISSUED FOR COMMENTS		

TEMPORARY PERMIT NO. 771
TO PRACTICE ENGINEERING IN
THE STATE OF MARYLAND

W.P. LONDON AND ASSOCIATES LIMITED
CONSULTING ENGINEERS
NIAGARA FALLS

HARFORD COUNTY RESOURCE RECOVERY FACILITY - HARFORD COUNTY, MARYLAND
ARCHITECTURAL
SERVICE BAY - REFLECTED CEILING PLAN



Consumat Systems, Inc.
RICHMOND, VIRGINIA U.S.A.

SCALE AS NOTED DRAWN D.G. DRAWING NO. 7624-0000-44 01-007

DATE AUG 12 1986 CHK. SHEET OF 2

DO NOT SCALE APPR. SHEET OF