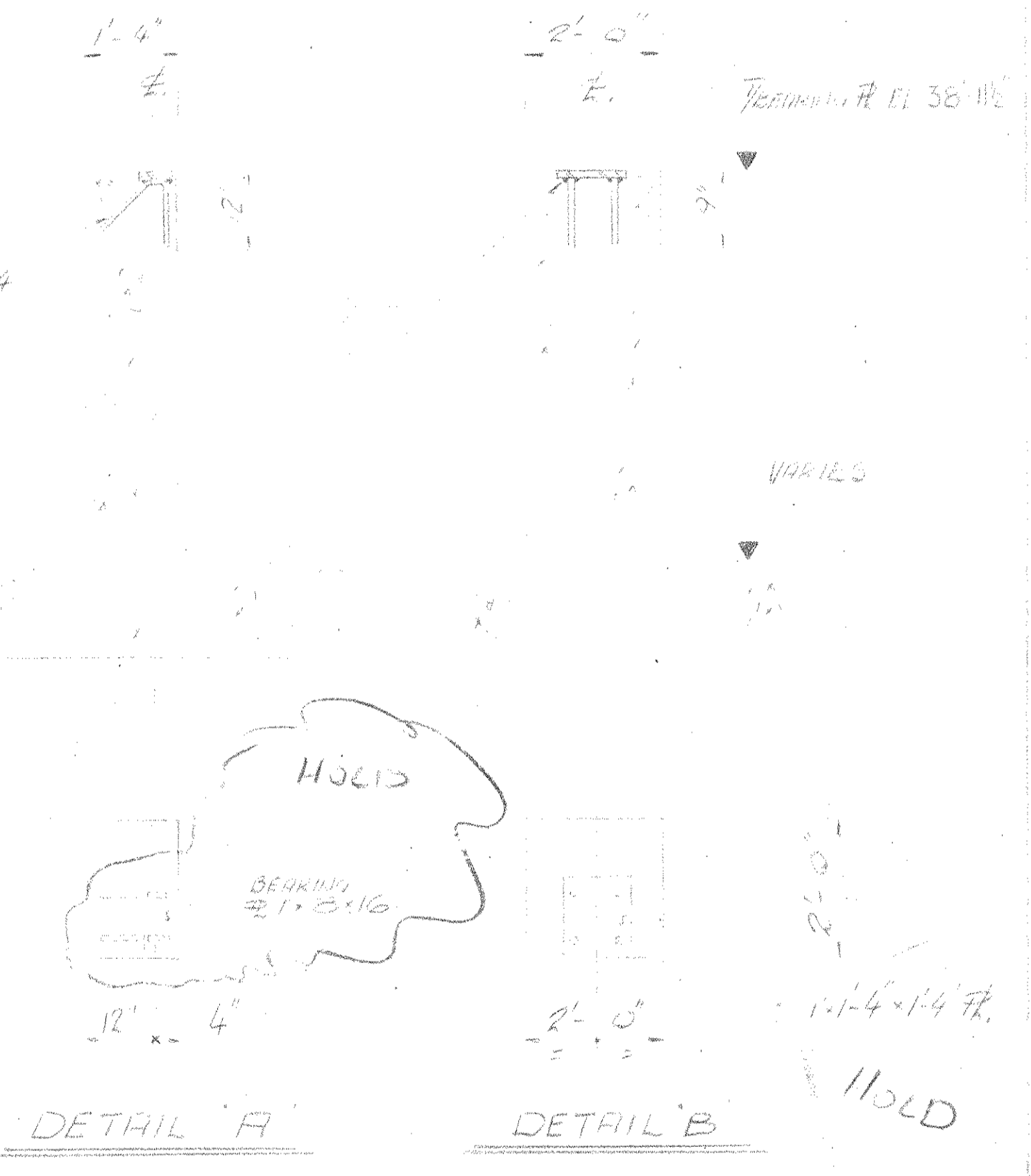
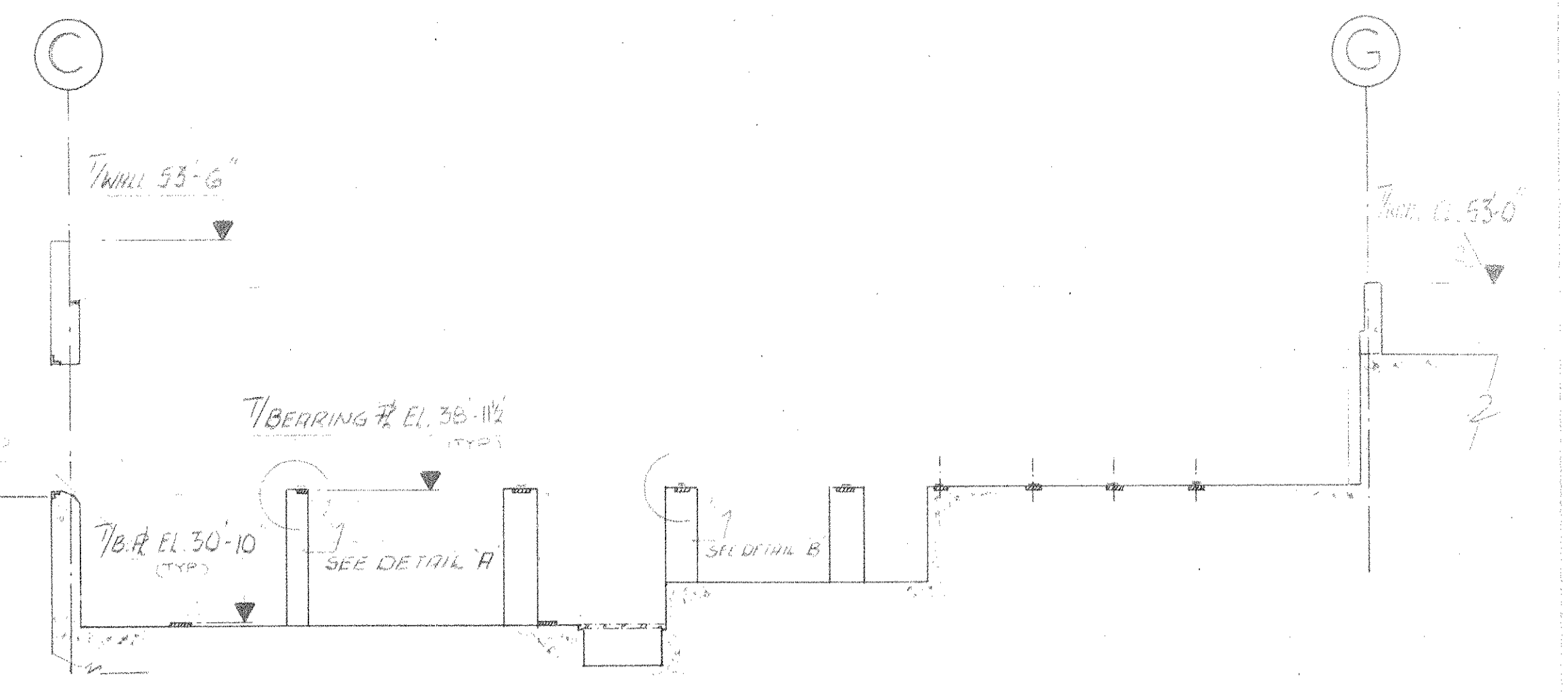
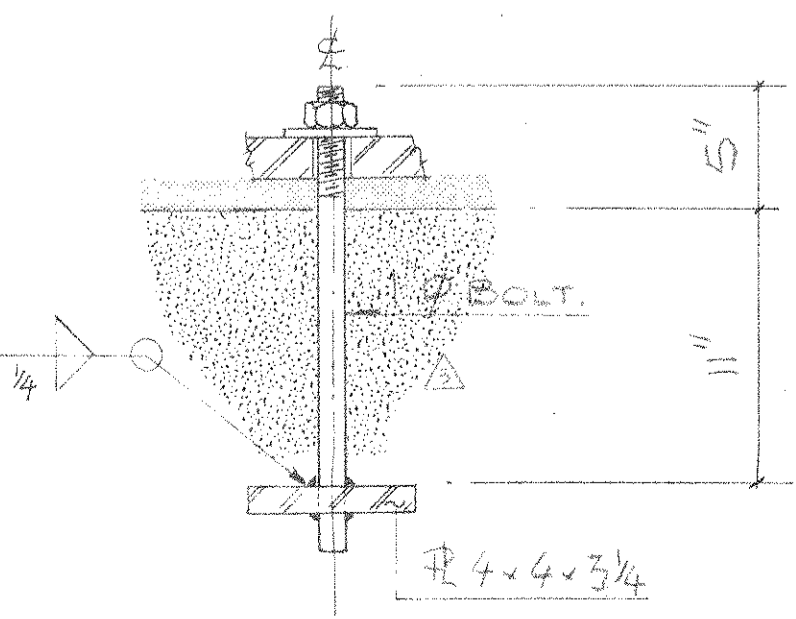


SECTION 1



NOTE:
 1) THIS DWG. TO BE READ IN CONJUNCTION WITH DWG. NO. 42DI-002 & 42DI-005 & 42DI-011.
 2) FOR BASE #. DETAILS SEE CONSUMAT MAIN PLATFORM PLAN, SHT. 1 & 2.



ANCHOR BOLT DETAIL
(212 N.Y.C.)

PART - PLAN

NO.	REVISION	DATE	BY
5	ORIGINAL TRANSFERRED TO C.S.I.	NOV 19/86	K.L.
4	BOLTS LOCATION REVISED TO SUIT PLATFORM COL. LOCATION	10/10/86	[Signature]
3	BOILER SUPPORT LOCATION & ANCHOR BOLT DETAIL HOLDING	1/11/86	[Signature]
2	TRENCH & WALL ON LINE 5 REVISED	86/04/20	[Signature]
1	REVISED AS SHOWN HOLD REMOVAL ABOVE EL. 31'-0"	10/25/86	[Signature]
0	REVISED FOR CONSTRUCTION UP TO EL. 31'-0"	10/25/86	[Signature]

TEMPORARY PERMIT NO. 771 TO PRACTICE ENGINEERING IN THE STATE OF MARYLAND

W.P. LONDON AND ASSOCIATES LIMITED
 CONSULTING ENGINEERS
 NIAGARA FALLS

HARFORD COUNTY RESOURCE RECOVERY FACILITY - HARFORD COUNTY, MARYLAND
 BEARING PLATE LOCATION PLAN
 EQUIPMENT AREA

Consumat Systems, Inc.
 RICHMOND, VIRGINIA U.S.A.

SCALE: 1" = 1'-0" DRAWN: [Signature] DRAWING NO. 42DI-003
 DATE: [Signature] CHK: [Signature] SHEET 5 OF 5
 DO NOT SCALE APPR: [Signature] REV: [Signature]