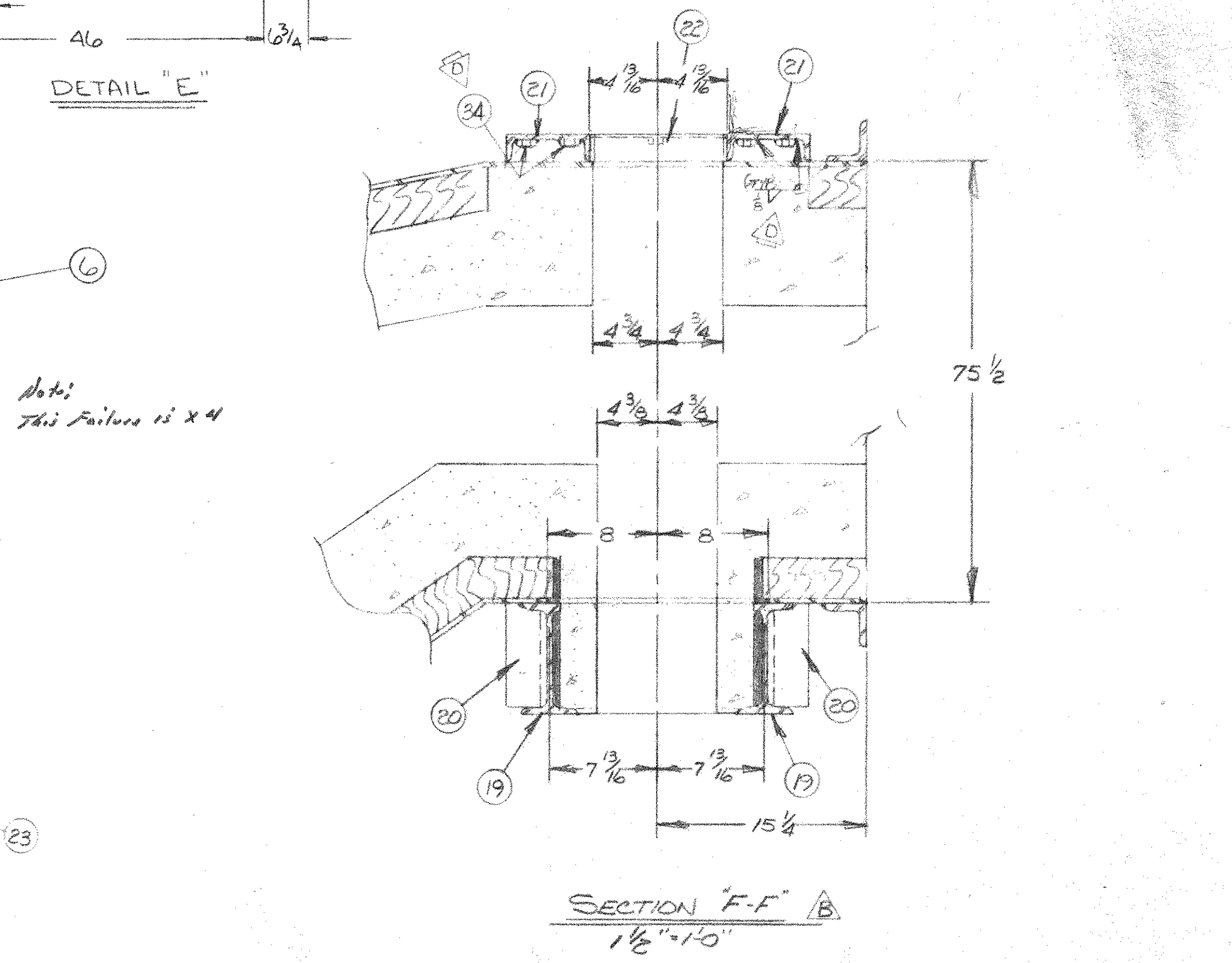
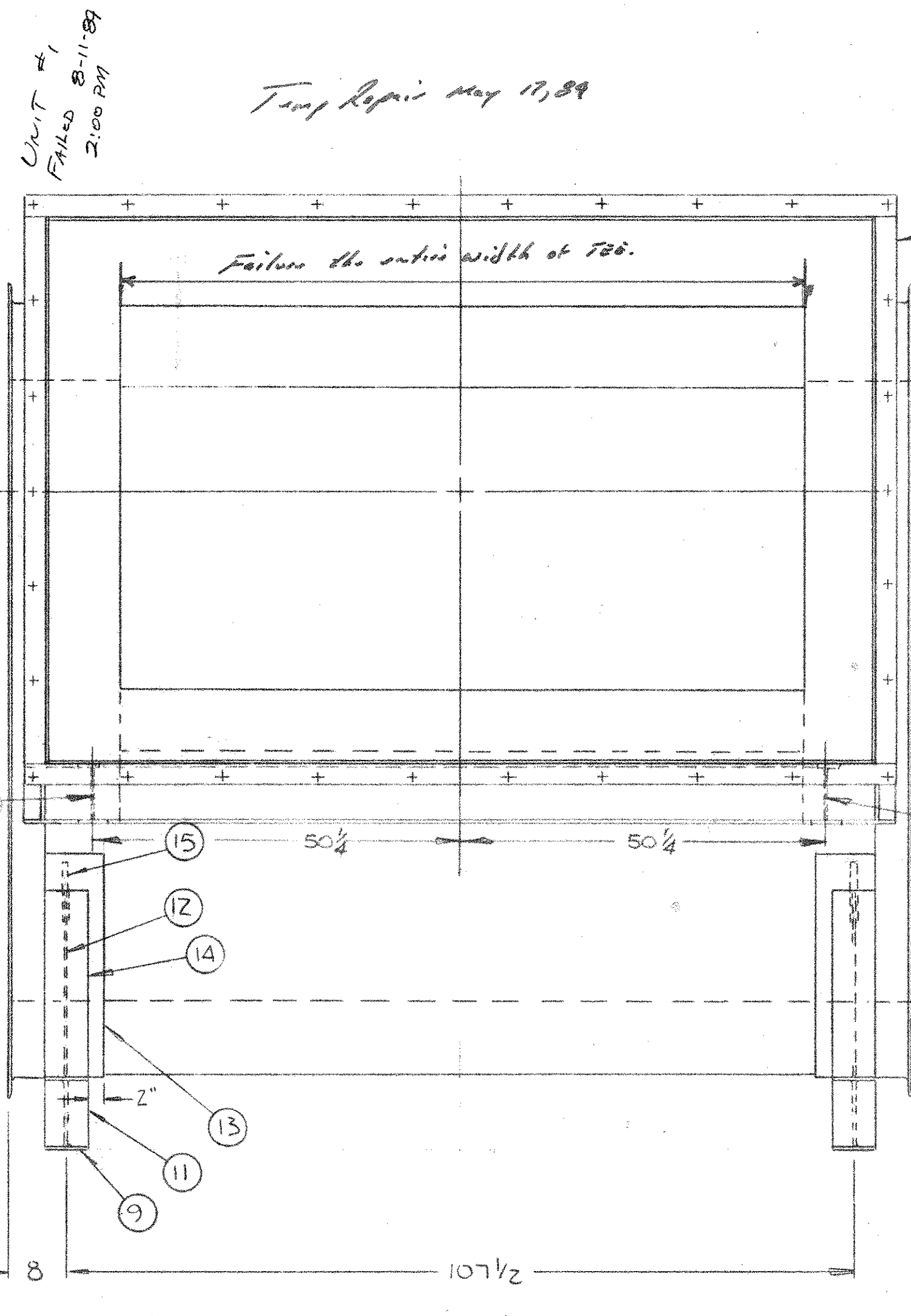
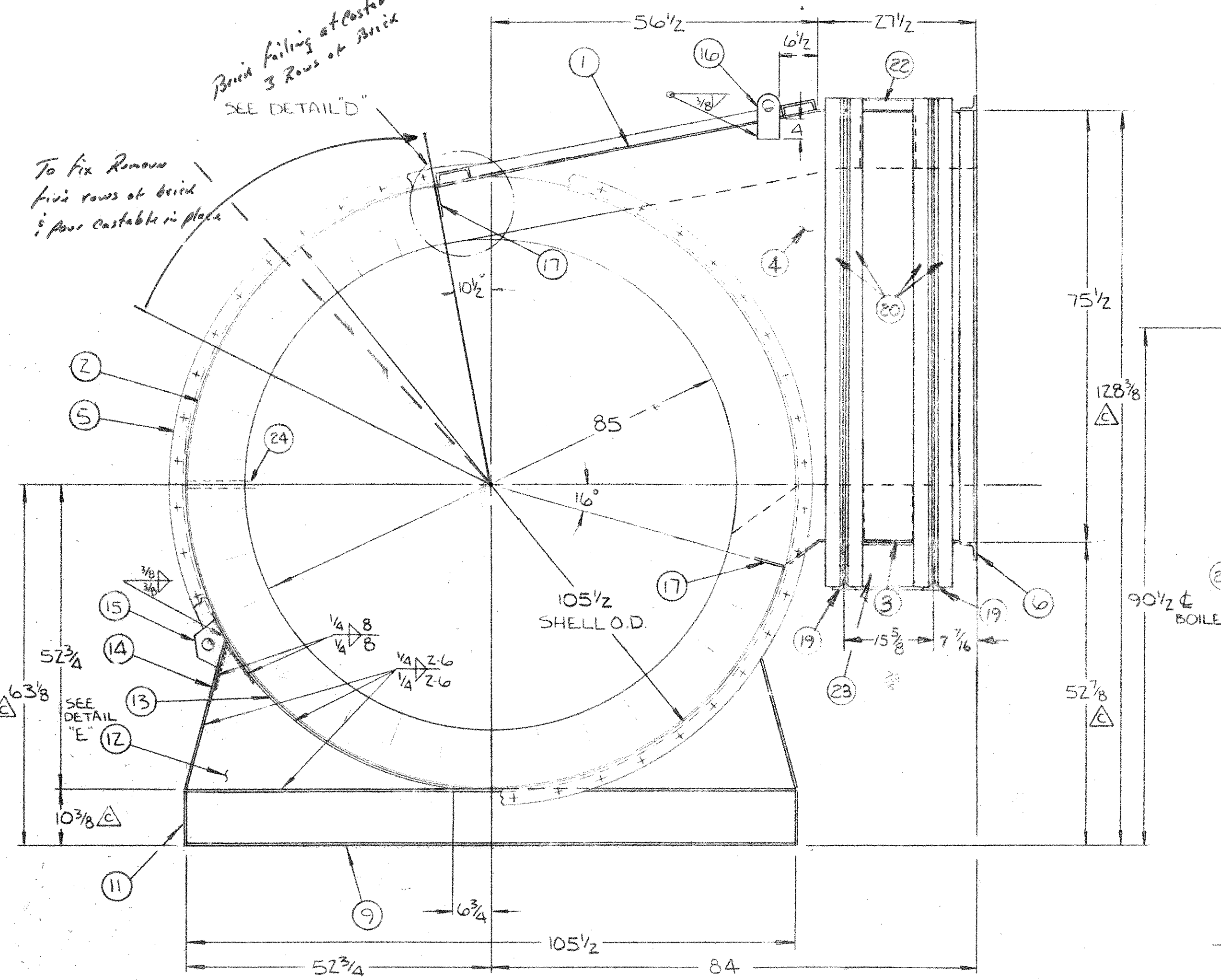
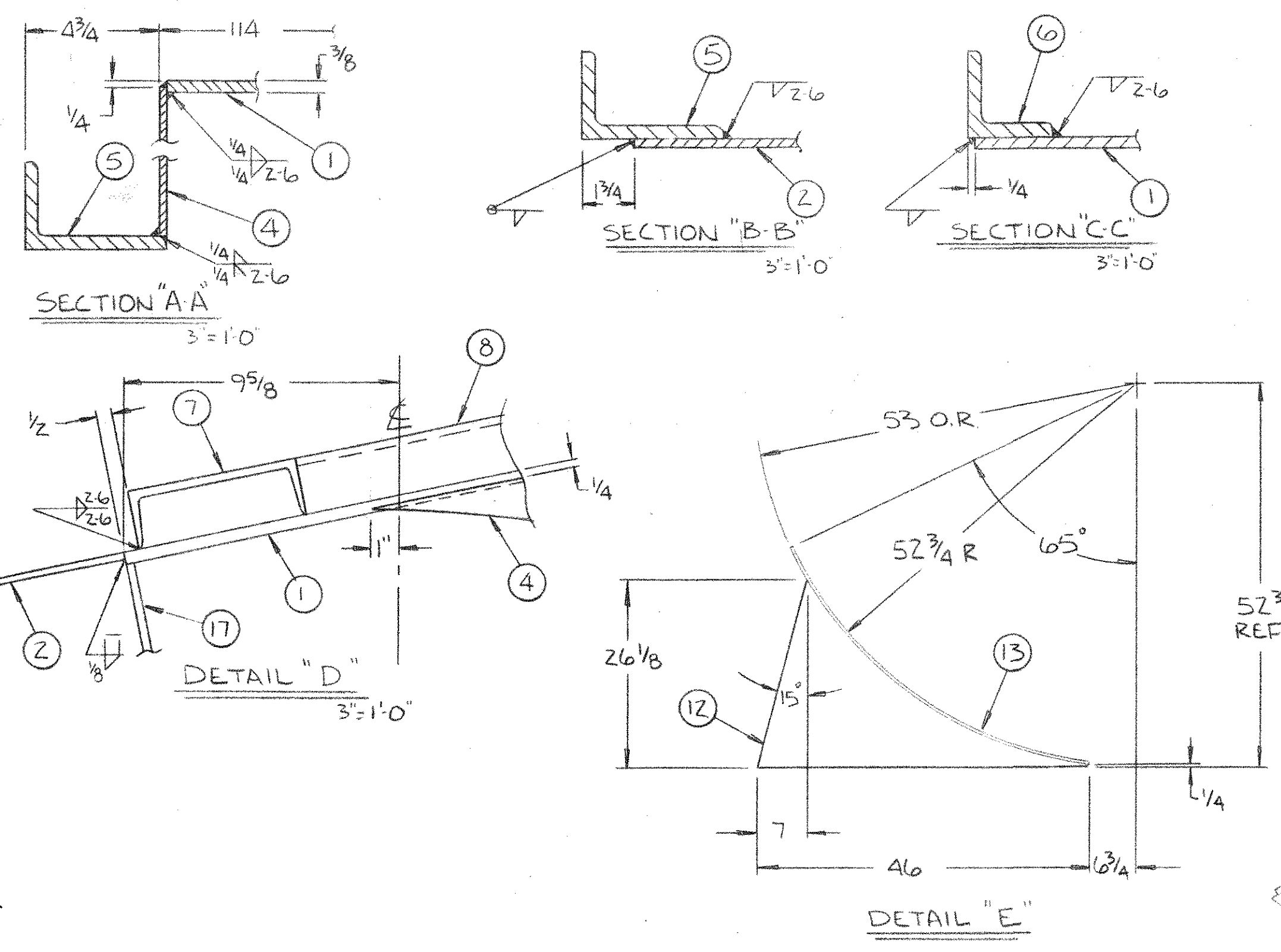
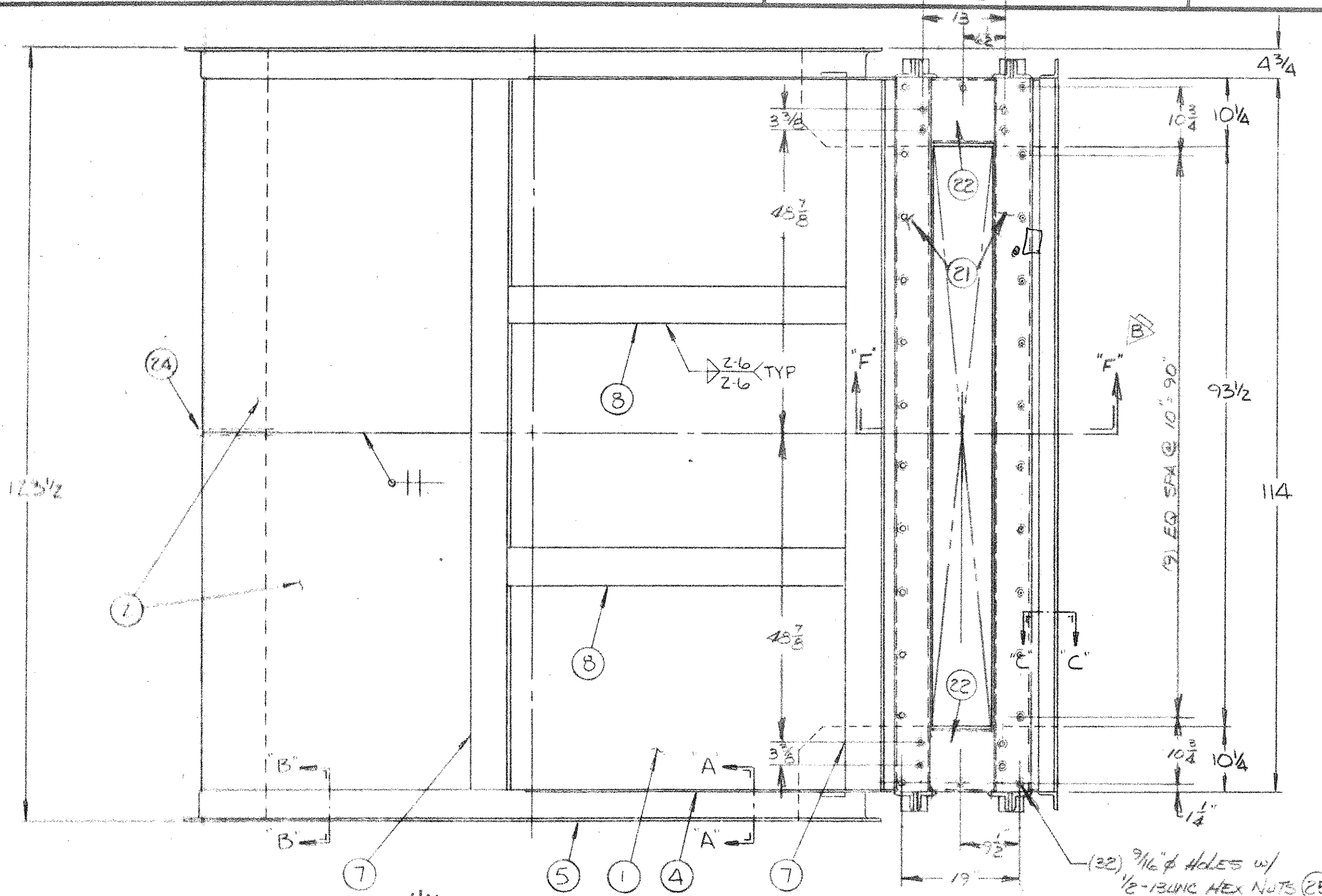


GROUP		PARTS LIST		
02	01	ITEM	PART	DESCRIPTION
1	1	GZ6B-0032-G01	TOP PLATE	
2	2		1/4 PLT. 60 x 223 5/8	
1	3	AZ6B-0033-G01	BOTTOM PLATE	
2	4	BZ6B-0031-G01	SIDE PLATE	
2	5		105 5/8 I.D. ANGLE RING	
			L5 x 3 1/2 W/ 3" LEG OUT	
			3/4 DIA, 44 HOLES, 109 B.C.	
1	6	DZ66-0022-G03	FLANGE	
2	7		C6 x 10.5# x 113 1/2	
2	8		C6 x 10.5# x 54 7/8	
2	9		W10 x 22# x 105 1/2	
	10			
4	11		1/4 PLT. 5 3/4 x 10	
4	12		1/4 PLT. 26 1/8 x 46	
4	13		1/4 x 8 F.B. x 53 1/8	
4	14		3/8 x 6 F.B. x 27	
Z	15	AZ6A-0032-G01	LIFT LUG BP656	
Z	16	AZZZ-0353-G01	LIFT LUG	
Z	17		1/4 x 5 F.B. x 120	
1	18	DZ6B-0035-G01	REFRACTORY	
2	19	BZ6B-0033-G01	BTM STIFFENING BEAM	
8	20		3 x 3 x 1/2 x 85	
2	21		C6 x 10.5# x 114	
2	22	AZ6B-0032-G01	SPACER PLATE	
2	23	AZ6B-0037-G01	BTM STIFFENING BEAM (BULK)	
1	24		1/2" PIPE T.O.E x 6 L6	
34	25		1/2" BUNC HEX NUT	



APPROX. WEIGHT = 37,000 LB.

D	Show ITEM 31 TYPICAL WELDING	9-17-86	LEN
C	ITEM 9, WID 122" (NOMINAL HT. 10 1/8), MEASURED 10 3/8 AS RECEIVED FROM SUPPLIER. REMOVED ITEM 10 1/2 SPACER FOR A L5 1/2 PLT. W/ 3" W/ 3" LEG OUT. REFRACTORY WAS 52 1/2 DIA. 105 3/8 DIA. 122 1/2 DIA. REFRACTORY	07-08-86	COTT
B	Add SECT 'F-F' DOOR REINFOR.	9-3-86	LRW
A	ADD REFRACTORY	08-28-86	COTT
NO.	REVISION	DATE	BY

HARFORD	P-4805	01	4573	3781
CSI PROCESS SPEC	NUMBER	GROUP	B/M	D/L
NEXT HIGHER ASSY				
BOILER TEE HOT GAS DUCT CS-3000E/ABCO				
		RICHMOND, VIRGINIA U.S.A.		
SCALE 3/4"=1'-0"	DRAWN COTT.	DATE 08-19-86	CHK.	D-26B-0030
DATE 08-19-86	APPR.	DATE 08-19-86	APPR.	D-26B-0030
NO.	REVISION	DATE	BY	REV.

THIS DRAWING IS THE PROPERTY OF CONSUMAT SYSTEMS INC. AND BE USED ONLY FOR PRODUCING ITEMS ON ORDER FOR CONE SYSTEMS INC. SUBJECT TO RETURN UPON DEMAND AND IS NOT PRINTED, PHOTOGRAPHED, COPIED, REPRODUCED, LOANED OR IN ANY WAY WITHOUT WRITTEN PERMISSION OF CONSUMAT SYSTEMS INC.