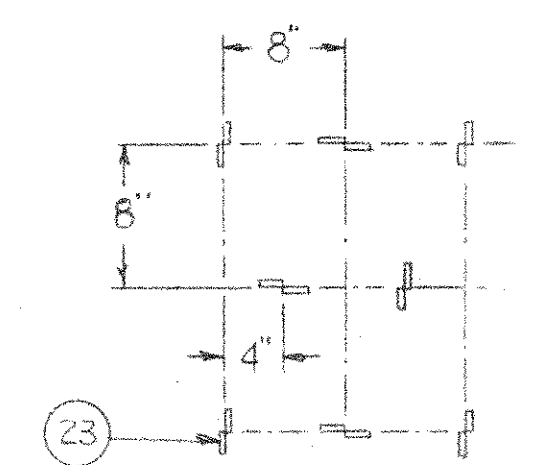
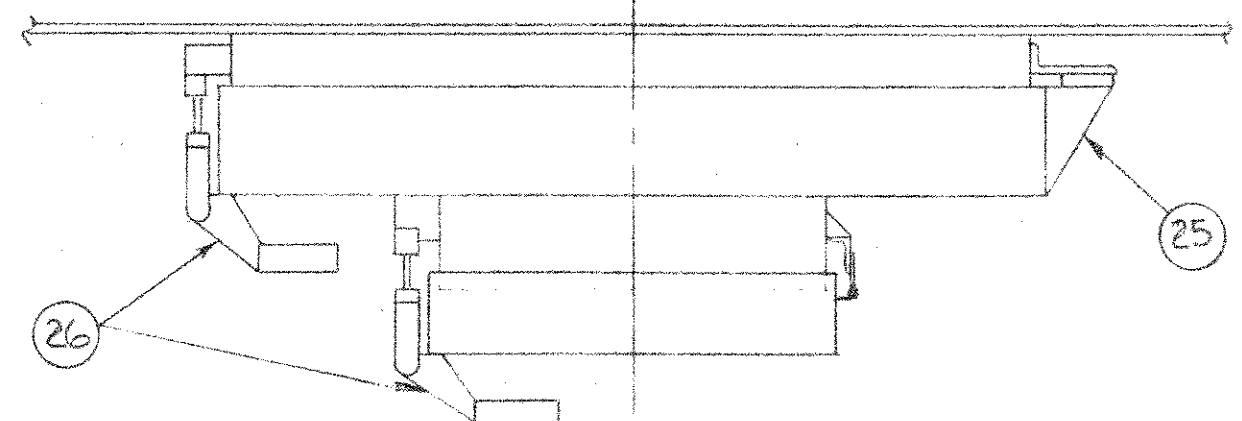


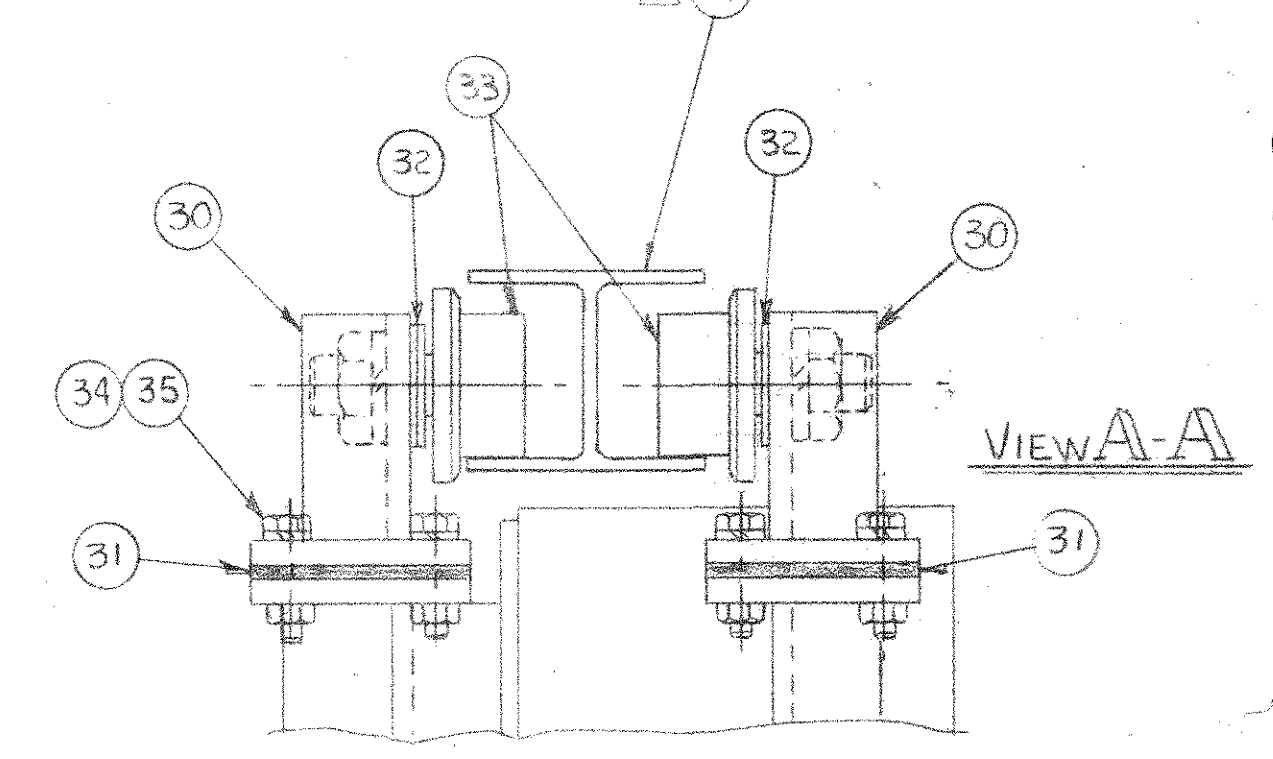
GROUP		PARTS LIST		
Q2	Q1	ITEM	PART	DESCRIPTION
1	1	1		3/4" X 6" F.B. X 76"
1	1	2		3/8" F.B. X 8 1/4" X 59"
1	1	3	A-39-0037-P01	HEAD PLATE
1	1	4		3/8" X 1" F.B. X 48"
2	2	5	A-39-0033-P01	SIDE PLATE
1	1	6	A-39-0034-P01	TOP PLATE
6	6	7	A-39-0035-P01	MOUNTING PLATE
12	12	8		3/8" X 4" F.B. X 8 1/2"
2	2	9		1/2" X 5" F.B. X 8"
1	1	10	B-39-0031-G01	DOOR JAMB
2	2	11	B-39-0084-P01	PULLING LUG
1	1	12	C-39-0088-G01	ROLLER SUPPORT
1	1	13	C-39-0088-G02	ROLLER SUPPORT
2	2	14	C-39-0087-G01	ROLLER SUPPORT
2	2	15	B-39-0085-P01	LUG
1	1	16	B-39-0085-P02	LUG
4	4	17		3/8" X 4 1/2" F.B. X 8 1/2"
2	2	18		3/8" X 2" F.B. X 8 1/2"
315	315	19		2" MONOBLOCK INSULATION
12	12	20		PLICAST LWI-22 REFRACTORY
37	37	21		PLICAST K.L MIX REFRACTORY
12	12	22		1 1/2" MONBLOCK INSULATION
80	80	23		7" REFRACTORY ANCHOR
1 REF	1 REF	24	C-39-0032-G01	36" X 72" CLEAN OUT DOOR
1 REF	1 REF	25	C-16D-0001-G02	72" DOOR HINGE ASSY.
3 REF	3 REF	26	C-16C-0001-G01	DOOR LATCH ASSY.
1 REF	1 REF	27	C-16-0004-G01	16 X 16 INSPECTION DOOR
3	3	28		HEX. HD. C.S. 3/4" - 10 X 2" LG., FULL THRS.
4	4	29		1/4" X 3 1/2" F.B. X 8"
4	4	30	C-39-0086-G01	ROLLER SUPPORT
16	16	31	C-39-0086-G02	SHIM
6	6	32	C-39-0086-G03	WASHER
4	4	33		ROLLER, OSBORN PART # FLRE-3
16	16	34		FLANGED ECCENTRIC LOAD RUNNER
16	16	35		HEX. HD. C.S. 1/2" - 13 X 2 1/2" LG.
33	33	36		LOCKWASHER 1/2"
4	4	37		GASKET
4	4	37		W5 X 19# X 23' 0" LG.

- NOTES:**
- 1) IN DOOR JAMB AREA (6" TOTAL WALL THICKNESS) BEND 1" FOOT ON ANCHORS & SPREAD PRONGS 45°.
  - 2) TOP PLATE OF ITEMS (12) & (14) MUST BE FLAT & PARALLEL WITH EACH OTHER, AND PARALLEL TO Q" X.
  - 3) ITEM (29) TO BE CENTERED ON THE LEGS OF THE CHANNEL.



**REFRACTORY ANCHOR LAYOUT**  
ANCHOR PRONGS TO BE SPREAD 45° FROM Q, AS SHOWN, AFTER INSULATION IS INSTALLED.

THIS DRAWING IS THE PROPERTY OF CONSUMAT SYSTEMS INC. AND IS TO BE USED ONLY FOR PRODUCING ITEMS ON ORDER FOR CONSUMAT SYSTEMS INC. SUBJECT TO RETURN UPON DEMAND AND IS NOT TO BE PRINTED, PHOTOGRAPHED, COPIED, REPRODUCED, LOANED OR USED IN ANY WAY WITHOUT WRITTEN PERMISSION OF CONSUMAT SYSTEMS INC.



GO1 - AS SHOWN  
GO2 - HINGE ON CLEANOUT AND INSPECTION DOORS OPP. HAND.

WARFORD	P4805	01	4569	3778	D-04c-0089
CSI PROCESS SPEC NUMBER		GROUP	B/M	D/L	NEXT HIGHER ASSY
CLEAN OUT HEAD ROLLING CLEAN OUT HEAD CS3000					
		Consumat Systems, Inc. RICHMOND, VIRGINIA U.S.A.			
C	GROUP 2 ADDED	10-9-86	GARR	SCALE 1"=1'-0"	DRAWN RHM
B	ADDED ITEM 37	10-2-86	DMJ	DATE 8-15-86	CHK
A	ADDED ITEM DIM 1 1/2"	8-25-86	RWN	DO NOT SCALE	APPR.
NO.	REVISION	DATE	BY	DO NOT SCALE	APPR.
				D-39-0089	REV.
				SHEET	OF