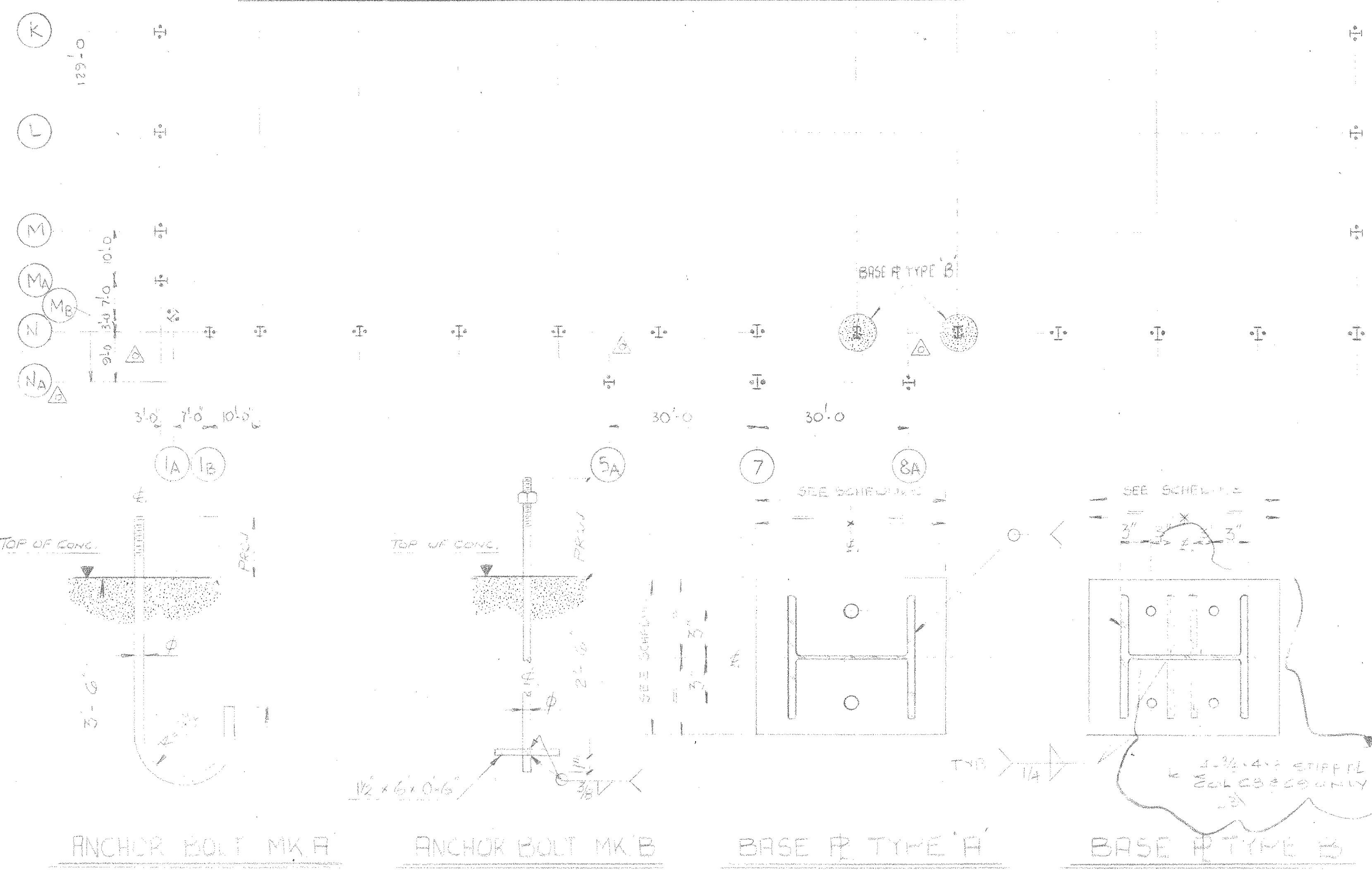


COL. ANCHOR BOLT SETTING PLAN



	A3	A11 A13	A10	A12	C3 TO C10	C8 C9	C11	C12	C13	D43	D11	D12	D13	E3	E11	E12	E13	F3	F11	F12	F13	N5 N6	N7 N8
TOP OF COL. EL.	75'-10"	80'-10"	75'-10"	80'-10"	83'-4"	83'-4"	83'-4"	83'-4"	83'-4"	80'-5"	85'-0"	85'-0"	85'-0"	81'-8"	86'-8"	86'-8"	86'-8"	83'-4"	88'-4"	88'-4"	88'-4"	88'-4"	79'-3"
EL. 60'-6" TO S	W14x38	W14x43	W8x24	W14x48	W16x40	W16x40	W12x50	W12x50	W14x48	W14x38	W12x50	W12x50	W14x48	W14x38	W12x45	W12x50	W14x48	W14x38	W12x45	W12x53	W12x53	W14x48	W12x26
BASE PL. EL. 55'-7"																							
BASE PL. EL. 46'-1"																							
BASE PL. EL. 42'-1"																							
BASE PL. EL. 40'-5"																							
BASE PL. SIZE.	3/4"x10" x1-3	1/2"x10" x1-3	3/4"x10" x0-10	1/2"x10" x1-4	1/2"x10" x1-5	3/4"x10" x1-5	1/2"x10" x1-2	1/2"x10" x1-3	1/2"x10" x1-3	3/4"x10" x1-3	1/2"x10" x1-2	1/2"x10" x1-3	1/2"x10" x1-3	3/4"x10" x1-3	1/2"x10" x1-2	1/2"x10" x1-2	1/2"x10" x1-4	1/2"x10" x1-3	1/2"x10" x1-3	1/2"x10" x1-2	1/2"x12" x1-2	1/2"x10" x1-4	3/4"x10" x1-1
ANCHOR BOLTS	2-1/4" MK-A	2-1/4" MK-A	2-1/4" MK-A	2-1/4" MK-A	2-1/4" MK-A	4-1/2" MK-B	2-1/4" MK-A	2-1/4" MK-A	2-1/4" MK-A	2-1/4" MK-A	2-1/4" MK-A	2-1/4" MK-A	2-1/4" MK-A	2-1/4" MK-A	2-1/4" MK-A	2-1/4" MK-A	2-1/4" MK-A	2-1/4" MK-A	2-1/4" MK-A	2-1/4" MK-A	2-1/4" MK-A	2-1/4" MK-A	2-1/4" MK-A
TOP OF CONC. EL.	53'-6"	42'-0"	53'-6"	42'-0"	53'-6"	53'-6"	40'-4"	40'-4"	42'-0"	42'-0"	40'-4"	40'-4"	42'-0"	42'-0"	40'-4"	40'-4"	42'-0"	42'-0"	40'-4"	40'-4"	50'-0"	46'-0"	
BOLT PROJ.	5"	5 3/8"	5"	5 1/2"	5"	5 1/4"	5 3/4"	5 1/2"	5 3/8"	5"	5 3/4"	5 1/2"	5 3/8"	5"	5 3/8"	6"	5 1/2"	5"	5 3/8"	6"	5 1/2"	5"	

	G1	G2	G3 TO G8	G9	G11	G12	G13	H1 H13	J1 J13	K1 K13	L1 L13	M1 M13	N1 N13	N2 N23	N3 TO N7	N8 N9	N11 N13	N12 N13	NA7			
TOP OF COL. EL.	90'-0"	90'-6"	55'-12"	83'-0"	50'-6"	90'-6"	90'-0"	88'-4"	86'-8"	85'-0"	83'-4"	81'-8"	80'-10"	80'-3"	80'-0"	80'-0"	80'-0"	80'-0"	80'-0"	79'-3"		
BASE PL. EL. 61'-1"	W10x33	W16x50	W16x50	W16x50	W16x57	W16x67	W10x33	W10x33	W10x33	W10x33	W10x33	W10x22	W10x22	W10x22	W16x50	W16x40	W16x40	W16x50	W16x50	W10x22	W12x26	
BASE PL. EL. 53'-1"																						
BASE PL. EL. 61'-1"																						
BASE PL. EL. 53'-1"																						
BASE PL. SIZE.	1"x12" x1-0	1"x10" x1-5	1"x10" x1-6	1"x10" x1-6	1"x10" x1-6	1"x10" x1-6	1"x10" x1-0	1"x10" x1-0	1"x10" x1-0	1"x10" x1-0	1"x10" x1-0	1"x10" x1-0	1"x10" x1-0	1"x10" x1-0	1"x10" x1-5	1"x10" x1-5	1"x10" x1-5	1"x10" x1-5	1"x10" x1-6	1"x10" x1-6	1"x10" x1-6	
ANCHOR BOLTS	4-1/2" MK-B	2-1/4" MK-A	2-1/4" MK-A	4-1/2" MK-B	2-1/4" MK-A	2-1/4" MK-A	4-1/2" MK-B	2-1/4" MK-A	2-1/4" MK-A	2-1/4" MK-A	2-1/4" MK-A	2-1/4" MK-A	2-1/4" MK-A	2-1/4" MK-A	2-1/4" MK-A	2-1/4" MK-A	2-1/4" MK-A	2-1/4" MK-A	2-1/4" MK-A	2-1/4" MK-A	2-1/4" MK-A	
TOP OF CONC. EL.	61'-0"	53'-0"	53'-0"	53'-0"	61'-0"															61'-0"		
BOLT PROJ.	5 1/2"	5 1/4"	5 1/4"	5 1/2"	5 1/4"	5 3/8"	5 1/4"	5 1/2"	5"	5"	5"	5"	5"	5"	5"	5"	5"	5"	5"	5"	5"	

NOTE:
1) THIS DWG. TO BE READ IN CONJUNCTION WITH DWG. NO. 43D1-002, 003 & 004.

TEMPORARY PERMIT NO. 771
TO PRACTICE ENGINEERING IN
THE STATE OF MARYLAND

NO.	REVISION	DATE	BY
3	ORIGINAL TRANSFERRED TO C.S.I.	Nov 19/86	KL
2	PLATE COL. DELETE		
1	REVISED AS SHOWN	86/08/	
0	ISSUED FOR CONSTRUCTION	86/07/25	
0	ISSUED FOR CONSTRUCTION		

W.P. LONDON AND ASSOCIATES LIMITED
CONSULTING ENGINEERS
NIAGARA FALLS

HARFORD COUNTY RESOURCE RECOVERY FACILITY - HARFORD COUNTY, MARYLAND

Column Anchor Bolt Setting Plan & Details

Consumat Systems, Inc.
RICHMOND, VIRGINIA U.S.A.

SCALE: 1/8" = 1'-0", UNLESS OTHERWISE NOTED

DATE: JUNE 13/86

DO NOT SCALE

DRAWN BY: J. HARRIS

CHEK: [Signature]

DRAWING NO.: 7624-0000-43D1-001

SHEET OF: [Number]