

GROUP		PARTS LIST		DESCRIPTION
Q2	Q1	ITEM	PART	
1	1	A-1210-CH	ELEC'L ENCLOSURE - HOFFMAN	
1	2	A-362408-LP	ELEC'L ENCLOSURE - HOFFMAN	
4	3		HEX HD CAP SCR. 3/8-16 x 3/4 LG	
4	4		HEX NUT - 3/8-16	
4	5		HEX HD CAP SCR. 1/4-20 x 5/8 LG	
4	6		HEX NUT - 1/4-20	
2	7	C-9612-3	PRESSURE SWITCH - BARKSDALE	
2	8	2 1/2 HH C18CCK	HYD. CYLINDER, 1 3/8" RD. SHEFFER	
3	9	5 HHT59AKVY	HYD. CYLINDER, 3" ROD, 3" DUAL PISTON, SHEFFER	
2	10	4 HHSL62K	HYD. CYLINDER, 2" ROD, SHEFFER	
1	11	7 HHSL99AY	HYD. CYLINDER, 3" ROD, 3" DUAL PISTON, SHEFFER	
2	12	2 HHHFH49CRKY	HYD. CYLINDER, 1 3/8" ROD, 4" DUAL PISTON, SHEFFER	
1	13	B2G213Z	SOLENOID VALVE, 2 WAY ASCO - SEE NOTE 1.	
6	14	F20BK	FLOW CONTROL VALVE - DELTROL	
5	15	V512M-3K-G-60	DIRECTIONAL CONTR'L VALVE CONTINENTAL	
3	16	V512M-3A-G-60	DIRECTIONAL CONTR'L VALVE CONTINENTAL	
1	17	MDO2-50-S1	SIDE MANIFOLD, 7 STA. CONTIN'L	
8	18	BDO2-250-20-175	BOLT KIT, CONTINENTAL	
8	19	VEA-2-	ELEC'L BOX CONTINENTAL	
AR	20		1" EMT	
AR	21		3/4" EMT	
AR	22		1/2" EMT	
AR	23		1" LIQ. TITE FLEX. CONDUIT	
AR	24		1/2" LIQ. TITE FLEX. CONDUIT	
AR	25		3/8" LIQ. TITE FLEX. CONDUIT	
AR	26		3/4" OD x .049 WL. ST STL TUBE	
AR	27		1/2" OD x .035 WL. ST STL TUBE	
AR	28	211-12	3/4" HYD. HOSE - STRATOFLEX	
AR	29	211-8	1/2" HYD. HOSE - STRATOFLEX	
10	30	417-12-12S	3/4" HOSE FITTG - JSN - STRATO.	
14	31	416-8-8S	1/2" HOSE FITTG - JSN - STRATO.	
9	32	51210-G-12AN	CONNECTOR - 3/4" x 1/2" AN-SWAGLOK	
12	33	S810-G-8AN	CONNECTOR - 1/2" x 3/4" AN-SWAGLOK	
1	34	LR-100-M	UNILET - TYPE LR, 1", W/COVER	
2	35	LL-100-M	UNILET - TYPE LL, 1", W/COVER	
3	36	X-100-M	UNILET - TYPE X, 3/4", W/COVER	
7	37	T-50-M	UNILET - TYPE T, 1/2", W/COVER	
12	38		1/2" NPT x 3/8" NPT BUSHING	
9	39		1/2" CLOSE NIPPLE	
2	40		1" CHASE NIPPLE	
2	41		1" GASKETED LOCKNUT	
5	42	TWR-100	1" EMT TO RMC COUPLING	
3	43	TWR-50	1/2" EMT TO RMC COUPLING	
5	44		1" EMT CONNECTOR - STR	
1	45		3/4" EMT CONNECTOR - STR	
3	46		1/2" EMT CONNECTOR - STR	
3	47	ST-38	3/8" FLEX. COND. CONN. - STR	
19	48	ST-50	1/2" FLEX. COND. CONN. - STR	
2	50	ST-9050	1/2" FLEX. COND. CONN. - 90°	
1	51	ST-9038	3/8" FLEX. COND. CONN. - 90°	
4	52	ST-90100	1" FLEX. COND. CONN. - 90°	
AR	53		3/8" OD x .035 WL ST STL TUBE	
2	54	S-600-2-8	TUBING ELBOW - 3/8" x 1/2" NPT	
2	55	S-600-3TTF	FEMALE BR. TEE 3/8" x 3/8" x 1/4" FNPT	

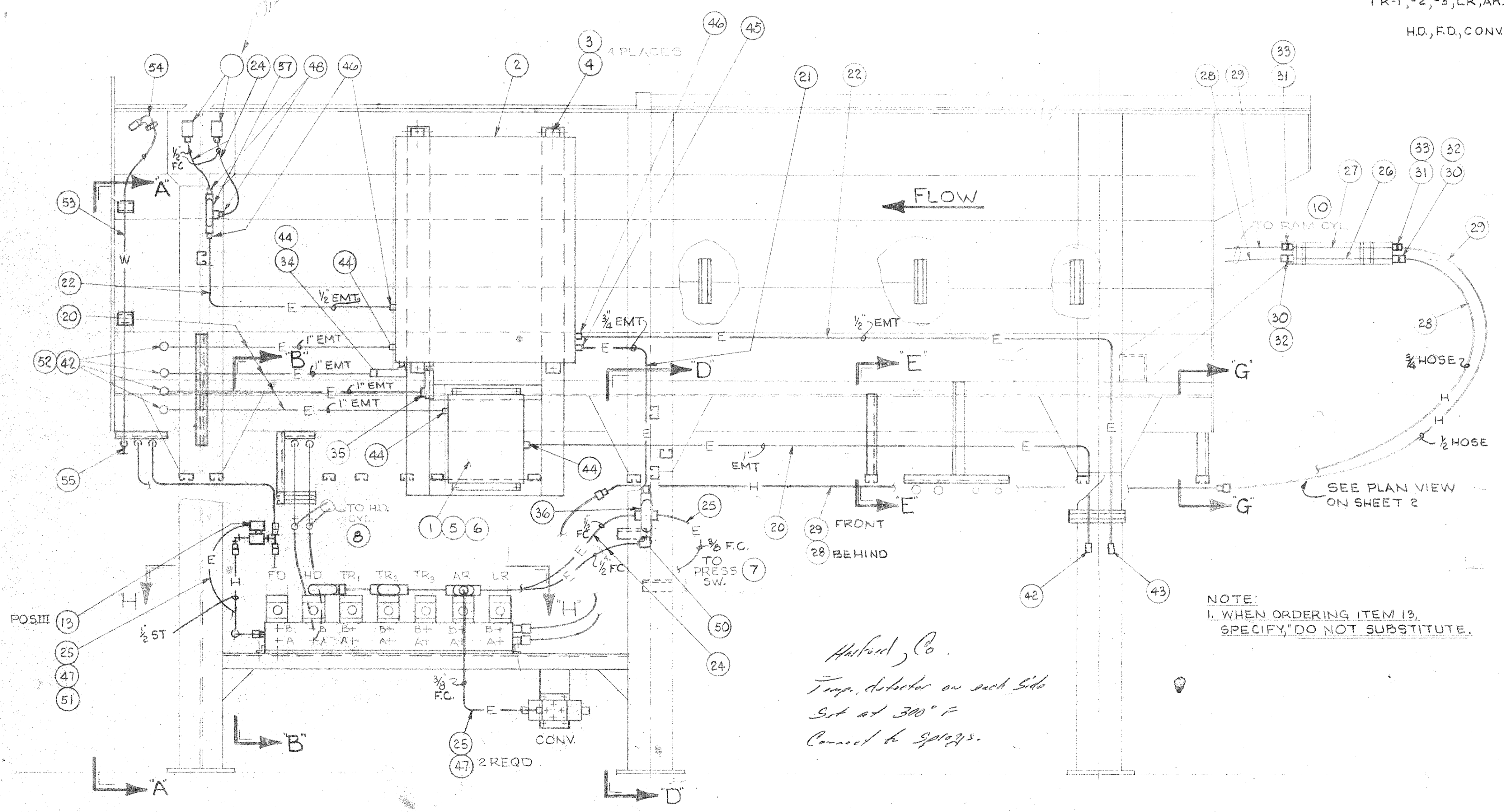
HOPPER DOOR
TR₁, TR₂, TR₃

LOADER RAM
ASH RAM

FIRE DOOR

TR-1, -2, -3, LR, AR.

H.D., F.D., CONV



CSI PROCESS SPEC NUMBER	GROUP	B/M	D/L	NEXT HIGHER ASSY
CONTROL PIPING LOADER ELEVATION LEFT SIDE				
Consumat Systems, Inc. RICHMOND, VIRGINIA U.S.A.				
SCALE 1/8" = 1"	DRAWN C.P. Furgis	DRAWING NO.		REV.
DATE 4-15-85	CHK	APPR.		
NO.	REVISION	DATE	BY	
	DO NOT SCALE			SHEET 1 OF 3

THIS DRAWING IS THE PROPERTY OF CONSUMAT SYSTEMS INC. AND IS TO BE USED ONLY FOR PRODUCING ITEMS ON ORDER FOR CONSUMAT SYSTEMS INC. SUBJECT TO RETURN UPON DEMAND AND IS NOT TO BE PRINTED, PHOTOGRAPHED, COPIED, REPRODUCED, LOANED OR USED IN ANY WAY WITHOUT WRITTEN PERMISSION OF CONSUMAT SYSTEMS INC.