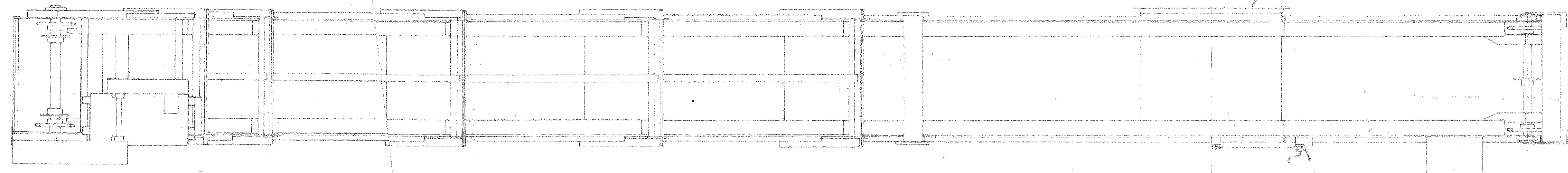


GROUP		PARTS LIST		
Q2	Q1	ITEM	PART	DESCRIPTION
~	1	1	D22B-D162 G01	CONVEYOR SUMP TANK ASSY.
1	~	2	D22B-D162 G02	CONVEYOR SUMP TANK ASSY.
1	1	3	D22K-D016 G01	ASH EJECTOR SHROUD
2	2	4	C22D-D062 G01	CONVEYOR TROUGH SECTION 120"
1	1	5	C22D-D070 G01	CONV TROUGH SECTION 60" LESS 1"
1	1	6	C22D-D098 G04	CONVEYOR TROUGH SECTION 57"
1	1	7	D22A-D074 G01	CONVEYOR HEAD ASSY.
1	1	8	D22A-D074 G02	CONVEYOR HEAD ASSY.
1	1	9	C22D-D069 G01	TROUGH LIMIT SWITCH TRIP
28	28	10	B22H-D014 G02	REVERSIBLE CHAIN FLIGHT
1	1	11	C22K-D006 G01	LIFT ASSEMBLY
1	1	12	H-16	CAUTION DECAL
8	8	13	A22-D083 G01	SHIM PACKAGE CONVEYOR
5	5	14		TUBE - RTV SILICONE SEALER
56	56	15		No 468 EXTENDED PIN - 2 3/8" EXT
280	280	16		No 468 (REXNORD OR EQUAL) CROSS FORGED RIVETLESS CHAIN - 5 FT LENGTHS - NO CONNECT. PLUS RES'D.

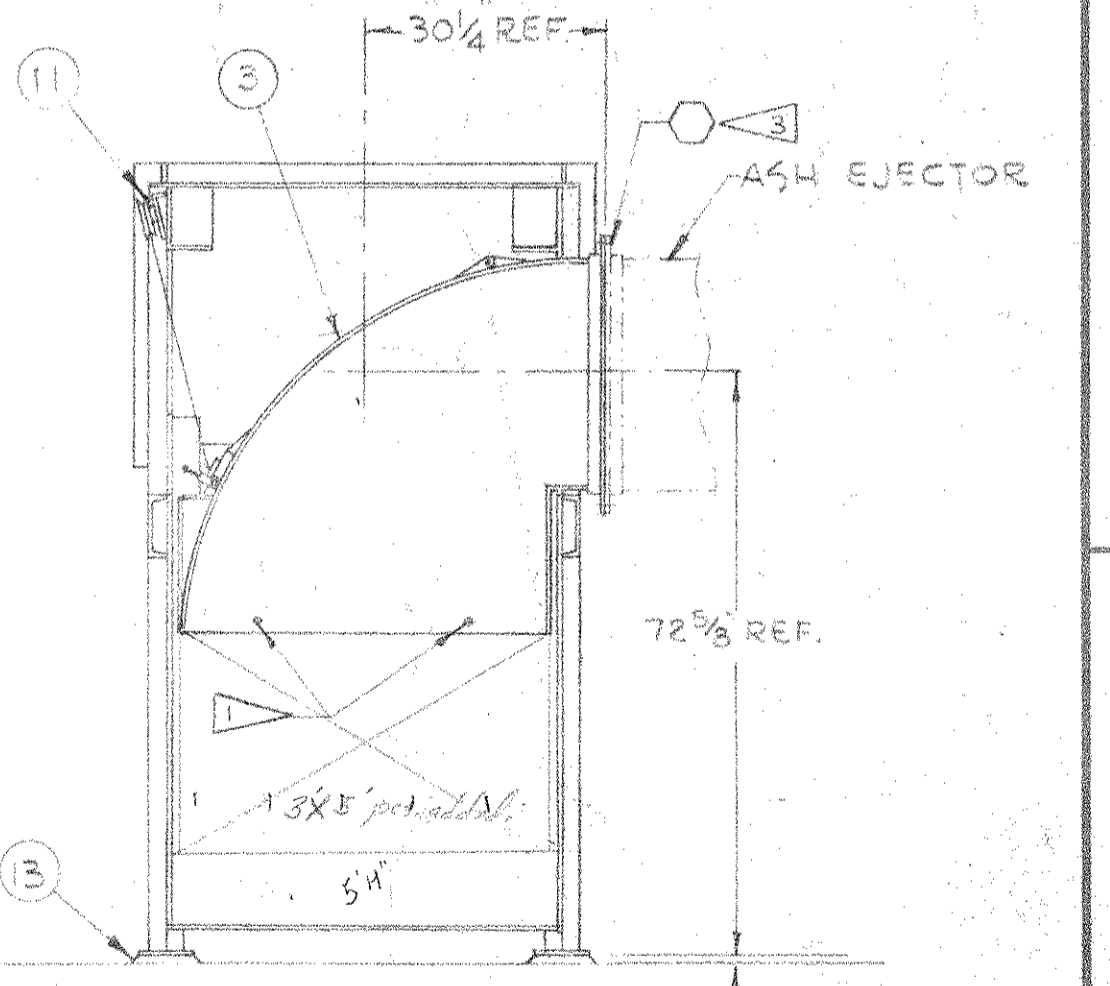
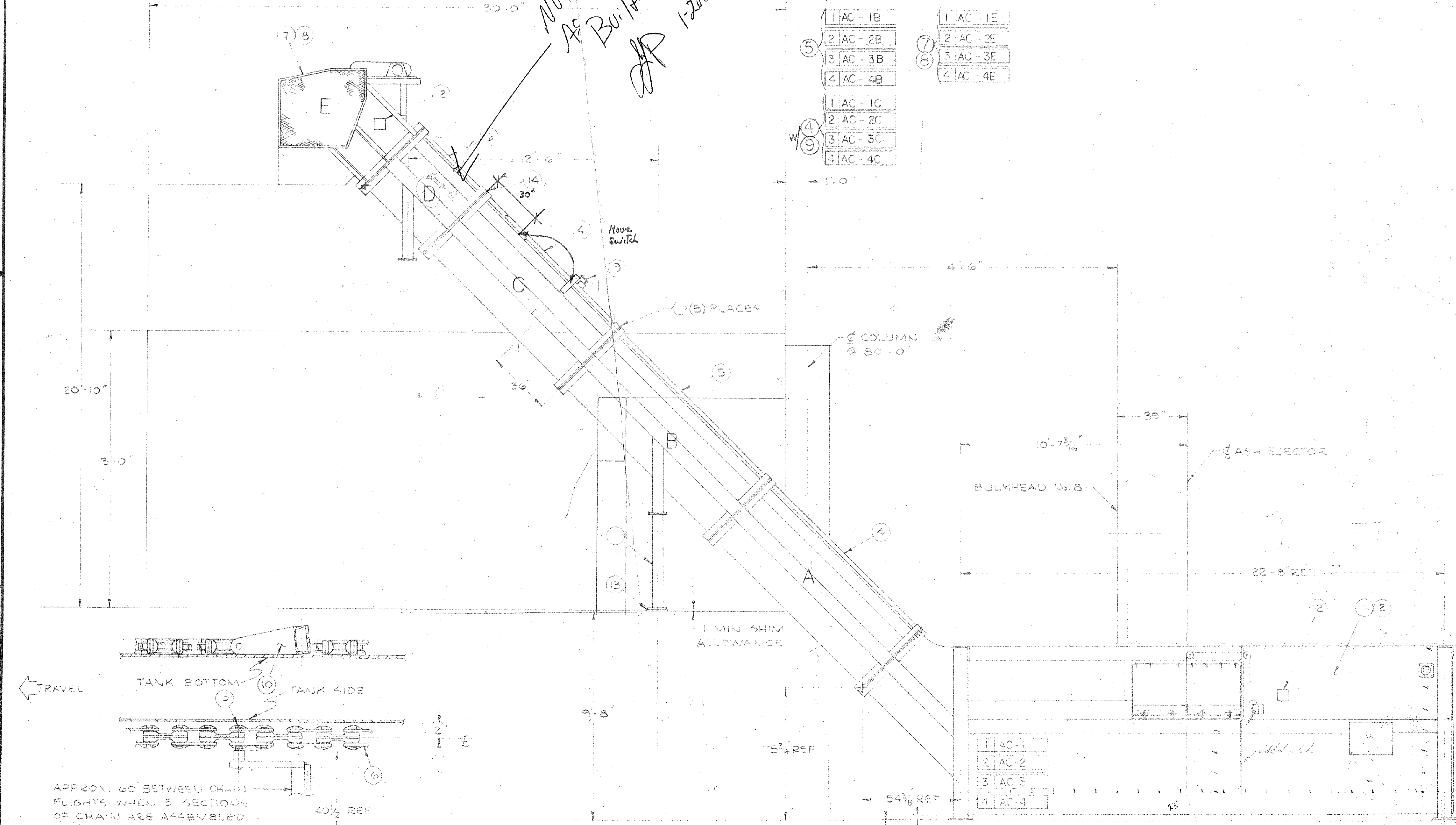


- ④ 1 AC-1A
- 2 AC-2A
- 3 AC-3A
- 4 AC-4A
- ⑤ 1 AC-1B
- 2 AC-2B
- 3 AC-3B
- 4 AC-4B
- ⑥ 1 AC-1D
- 2 AC-2D
- 3 AC-3D
- 4 AC-4D
- ⑦ 1 AC-1E
- 2 AC-2E
- 3 AC-3E
- 4 AC-4E
- ⑧ 1 AC-1C
- 2 AC-2C
- 3 AC-3C
- 4 AC-4C
- ⑨ 1 AC-1
- 2 AC-2
- 3 AC-3
- 4 AC-4

NOT AS BUILT
 1-2001
AP

NOTES:

- ▶ AFTER THE ASH EJECTOR SHROUD (ITEM 3) IS BOLTED TO THE ASH EJECTOR, THE SHROUD SUPPORT CLIPS IN THE TANK ARE TO BE REMOVED.
- ▶ (1) TUBE IS REQUIRED PER JOINT.
- ▶ (B) INDICATES FASTENERS PROVIDED ON THE BOLT SCHEDULE.
- ▶ G01 - AS SHOWN.
 G02 - ASH EJECT. SHROUD & LIFT ASSY. OPP. HAND



EQUIP. LEVEL ELEV. 0'-0"

SCALE 1/2" = 1'-0"

SHIPPING ID NO.

UNIT NO. COMPONENT PART ID. NO.

01402	4481	~	
GROUP	B/M	D/L	NEXT HIGHER ASSY.

HARFORD CO. CS-3000E

Consumat Systems, Inc.
 RICHMOND, VIRGINIA U.S.A.

SCALE 3/8" = 1'-0"

DRAWN EAS4

CHECKED CHK

DATE 7-15-85

DO NOT SCALE

APPR.

SHEET OF

REV.

D-22-0082

THIS DRAWING IS THE PROPERTY OF CONSUMAT SYSTEMS INC. AND IS TO BE USED ONLY FOR PRODUCING ITEMS ON ORDER FOR CONSUMAT SYSTEMS INC. SUBJECT TO RETURN UPON DEMAND AND IS NOT TO BE PRINTED, PHOTOGRAPHED, COPIED, REPRODUCED, LOANED OR USED IN ANY WAY WITHOUT WRITTEN PERMISSION OF CONSUMAT SYSTEMS INC.