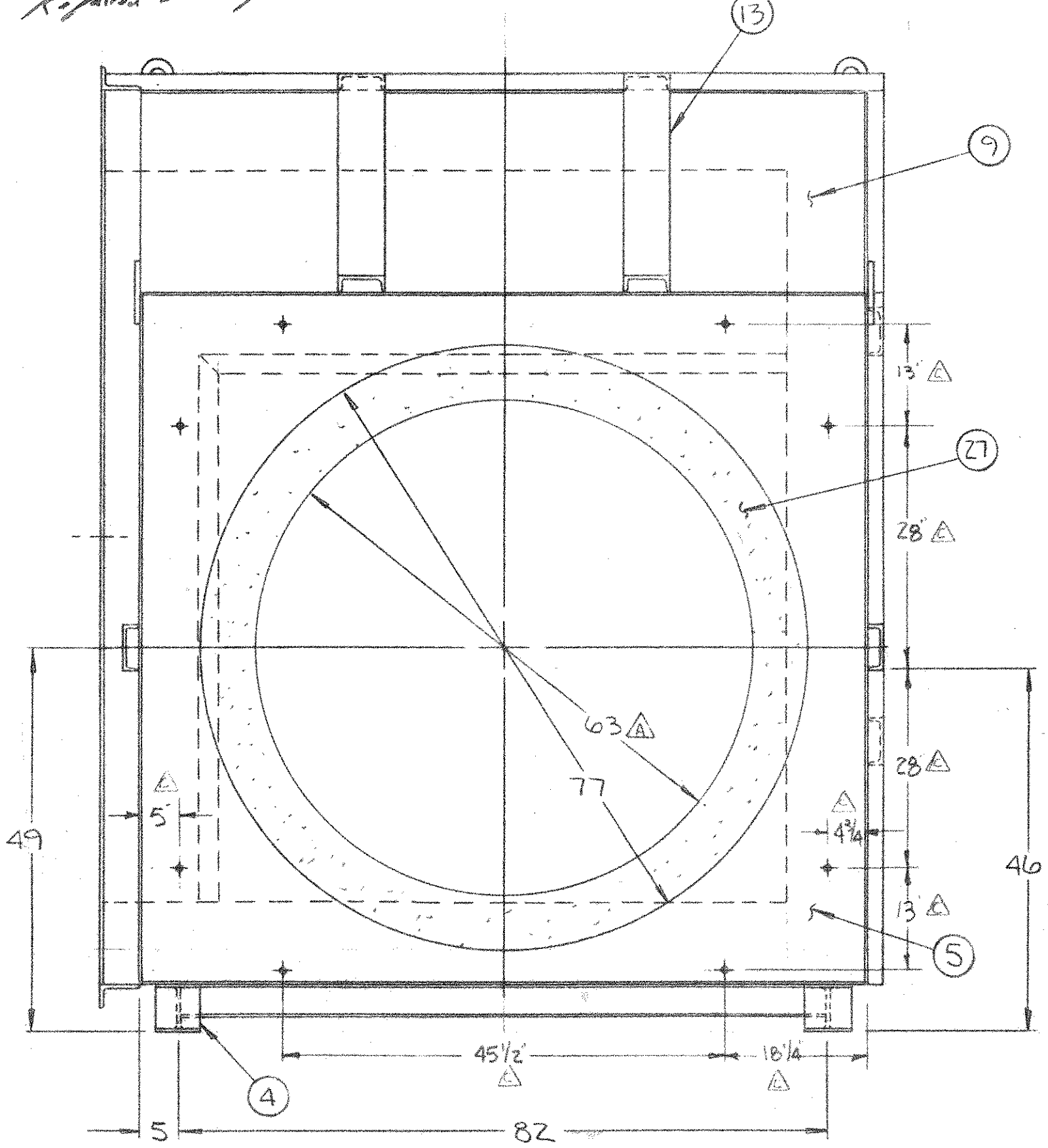
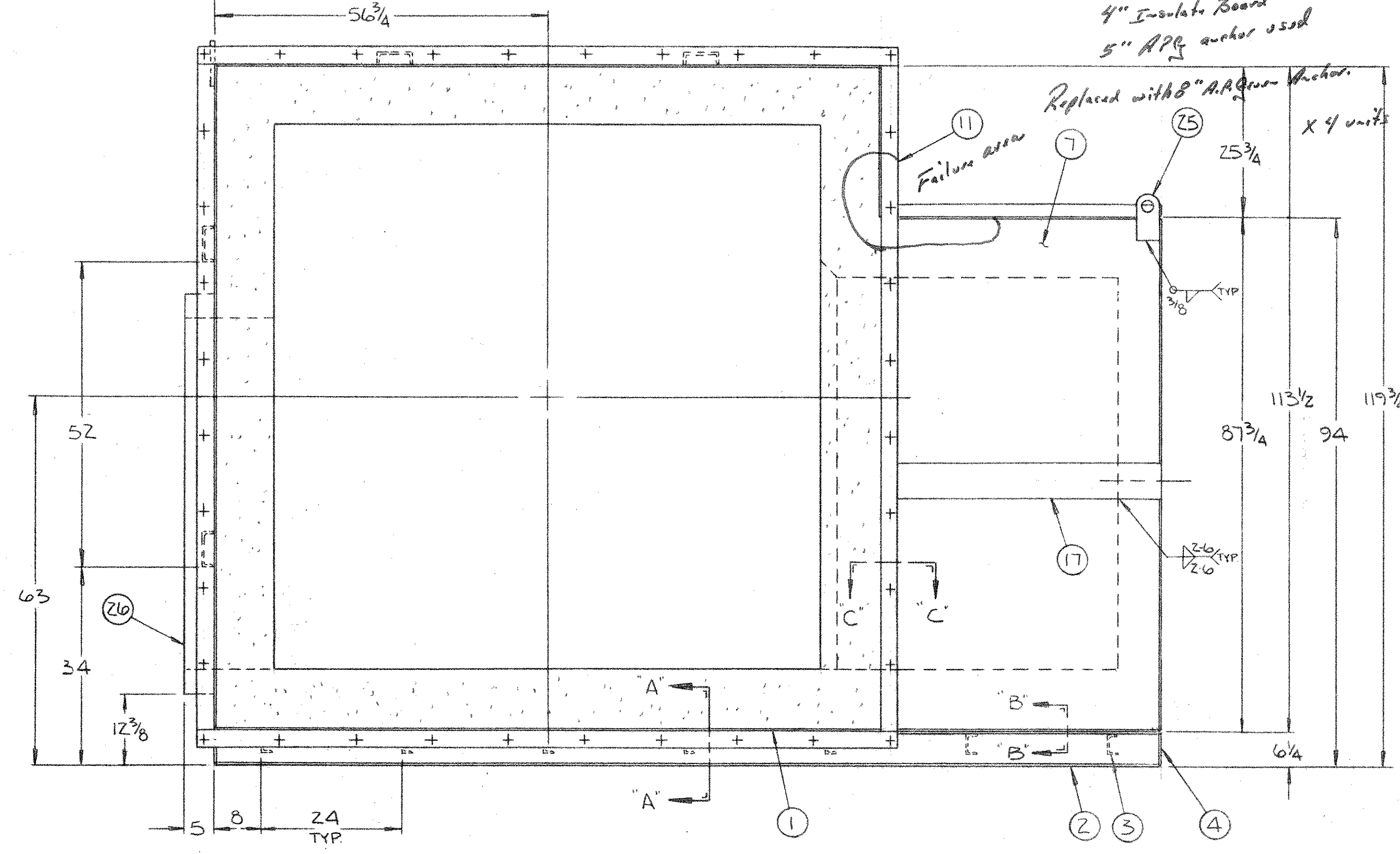
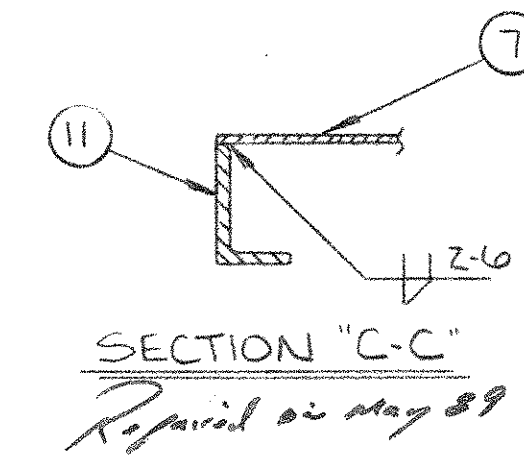
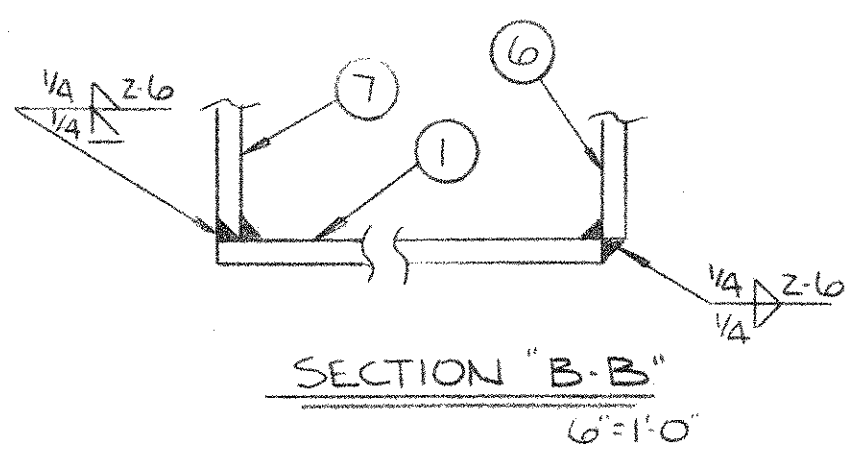
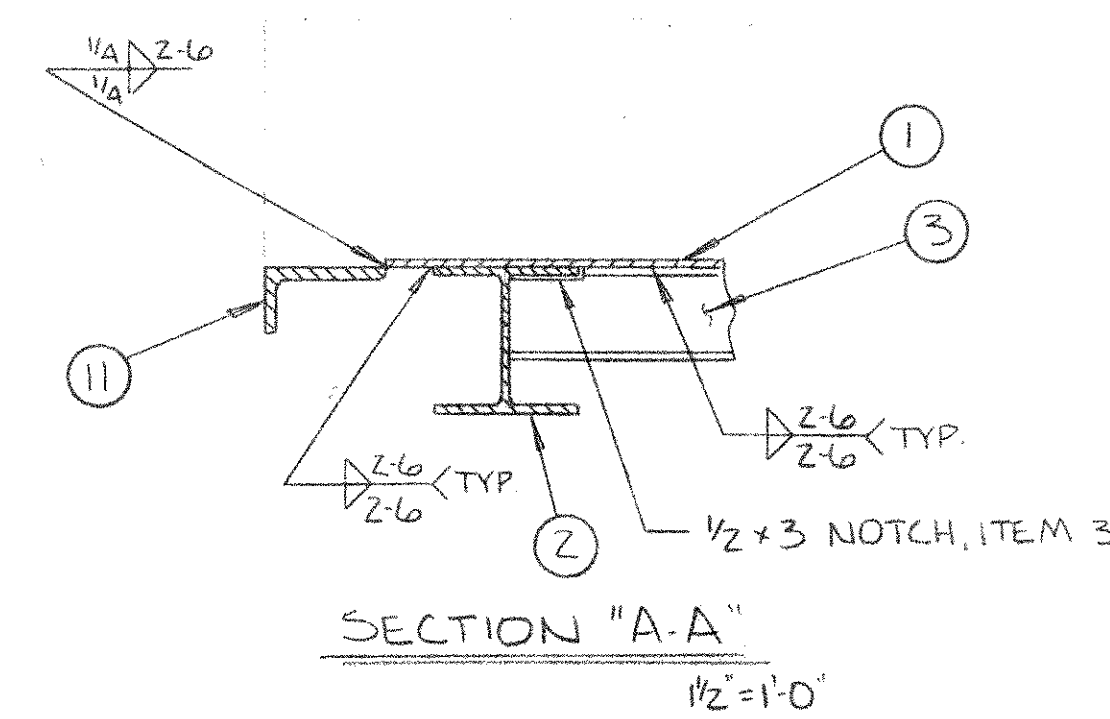
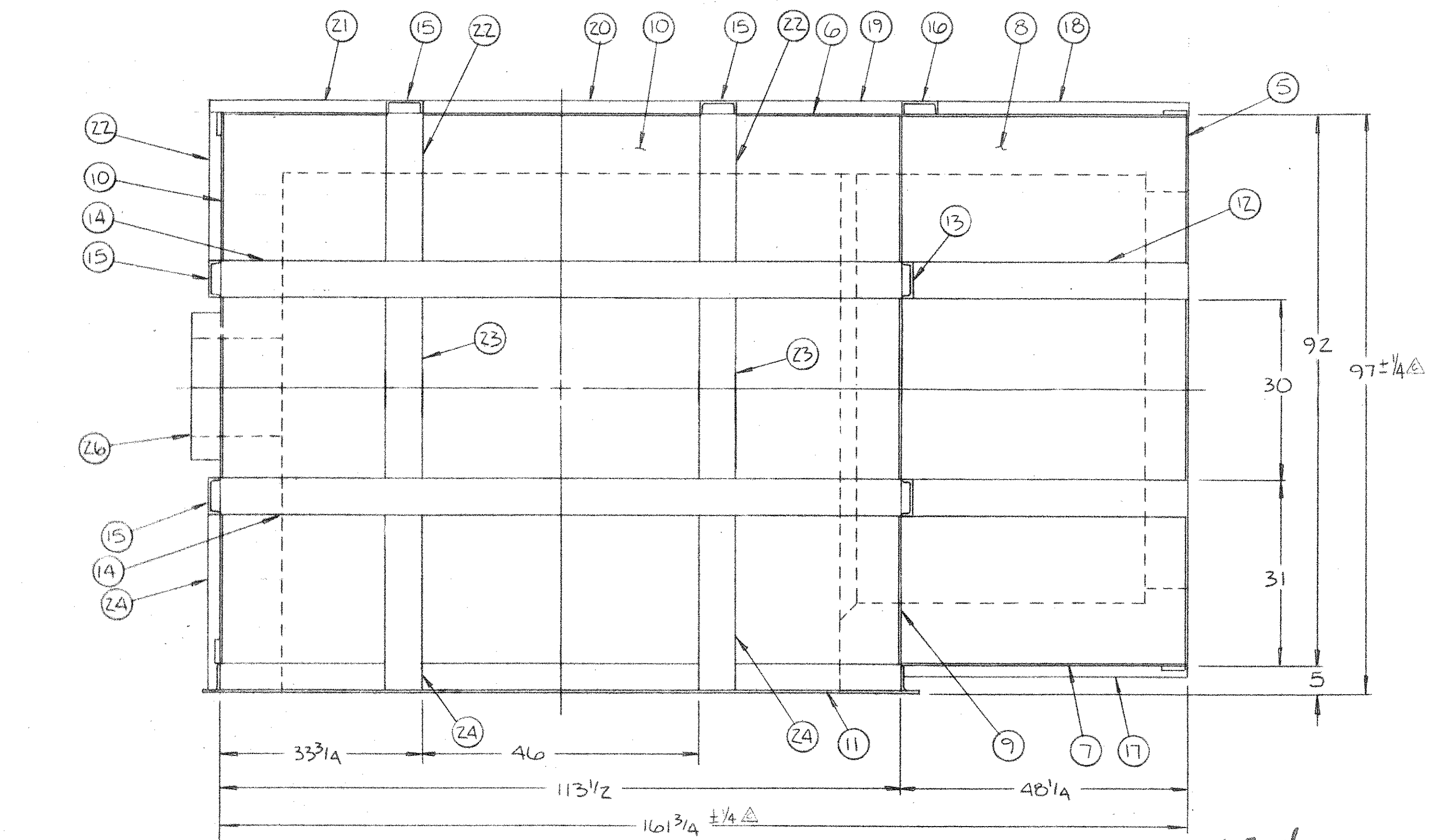


GROUP		PARTS LIST		
QZ	QI	ITEM	PART	DESCRIPTION
1	1	1		1/4 PLT. 91 3/4 x 161 1/4
2	2	2		W6 x 20 # x 161 1/4
7	7	3		C4 x 7.25 # x 81 3/4
4	4	4		1/4 x 6 F.B. x 5 3/4
1	1	5	C-26A-0049-G01	UPPER CH. MATING PLATE Δ
1	1	6	B-26A-0050-G01	SIDE PLATE
1	1	7		1/4 PLT. 48 x 87 1/4
1	1	8		1/4 PLT. 48 x 91 1/2
1	1	9		1/4 PLT. 25 1/2 x 91 3/4
2	2	10		1/4 PLT. 91 3/4 x 113
1	1	11	D-26G-0022-G01	FLANGE
2	2	12		C6 x 10.5 # x 46 1/4
2	2	13		C6 x 10.5 # x 27 3/4
2	2	14		C6 x 10.5 # x 113 1/2
4	4	15		C6 x 10.5 # x 115 1/2
1	1	16		C6 x 10.5 # x 87 3/4
1	1	17		C6 x 10.5 # x 47 3/4
1	1	18		C6 x 10.5 # x 42 1/4
2	2	19		C6 x 10.5 # x 27 3/4
2	2	20		C6 x 10.5 # x 46
2	2	21		C6 x 10.5 # x 29 3/4
4	4	22		C6 x 10.5 # x 25
2	2	23		C6 x 10.5 # x 30
4	4	24		C6 x 10.5 # x 29 1/2
4	4	25	A-22Z-0353-G01	LIFT LUG
1	1	26	C16E-0005-G01	16 x 60 DOOR JAMB
1	1	27	D-26A-0051-G01	REFRACTORY Δ



GO1 - AS SHOWN
GO2 - OPPOSITE HAND
APPROX. WEIGHT = 40,000 LB.

Δ TOLERANCES:
NORMAL $\pm 1/8$ " EXCEPT AS NOTED. TOLERANCES APPLY PARTICULARLY TO OVER-ALL DIMENSIONS AND MUST NOT BE ACCUMULATIVE. HOLE LOCATION DIMENSIONS MUST BE HELD TO $\pm 1/32$ "

THIS DRAWING IS THE PROPERTY OF CONSUMAT SYSTEMS INC. AND IS TO BE USED ONLY FOR PRODUCING ITEMS ON ORDER FOR CONSUMAT SYSTEMS INC. SUBJECT TO RETURN UPON DEMAND AND IS NOT TO BE PRINTED, PHOTOGRAPHED, COPIED, REPRODUCED, LOANED OR USED IN ANY MANNER WITHOUT WRITTEN PERMISSION OF CONSUMAT SYSTEMS INC.

C	ADD GA TOLERANCES	9-19-86	DMH
B	ADD REFRACTORY	08-25-86	COTT
A	CORRECTED DIMENSION, 63 WAS 66	08-22-86	COTT
NO.	REVISION	DATE	BY

HARFORD	PABOS	01/02	4544	3758
CS1	PROCESS SPEC	NUMBER	GROUP	B/M D/L NEXT HIGHER ASSY
ELBOW HOT GAS DUCT CS-3000E				
Consumat Systems, Inc. RICHMOND, VIRGINIA U.S.A.				
SCALE 3/4"=1'-0"		DRAWN COTT		DRAWING NO.
DATE 08-11-86		CHK		D-26A-0048
DO NOT SCALE		APPR		SHEET OF