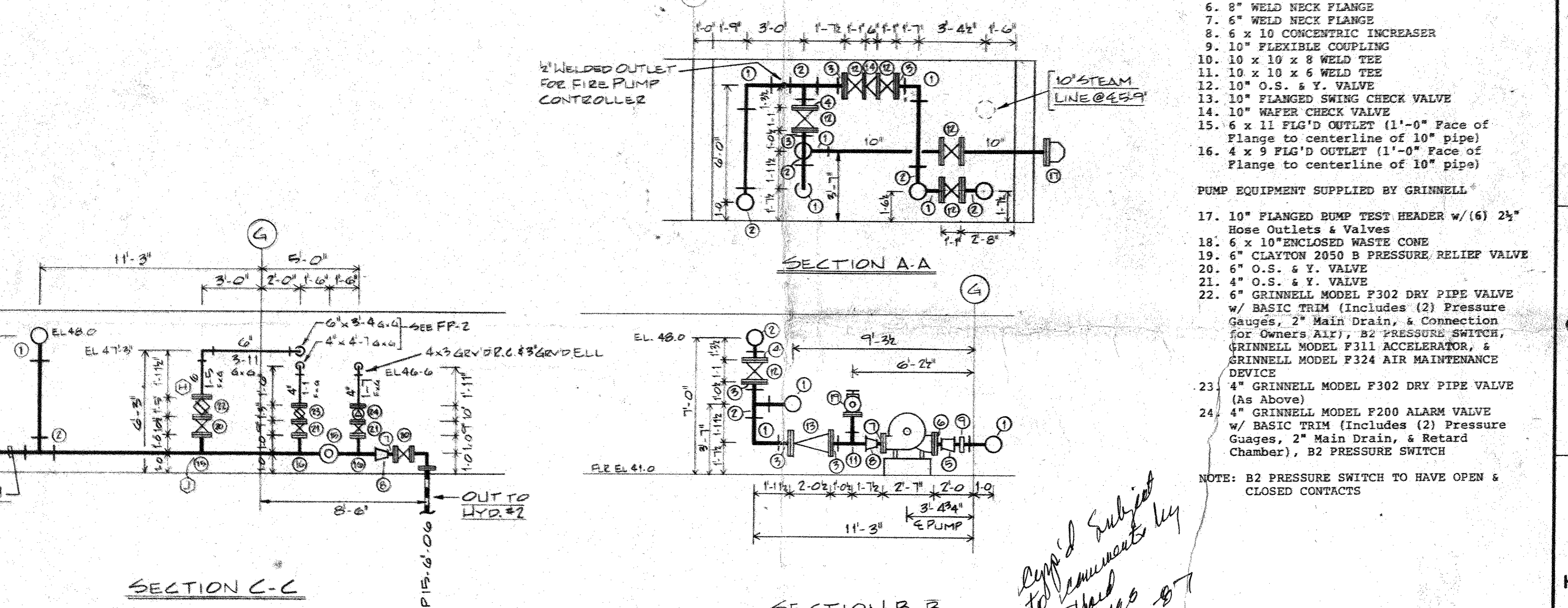
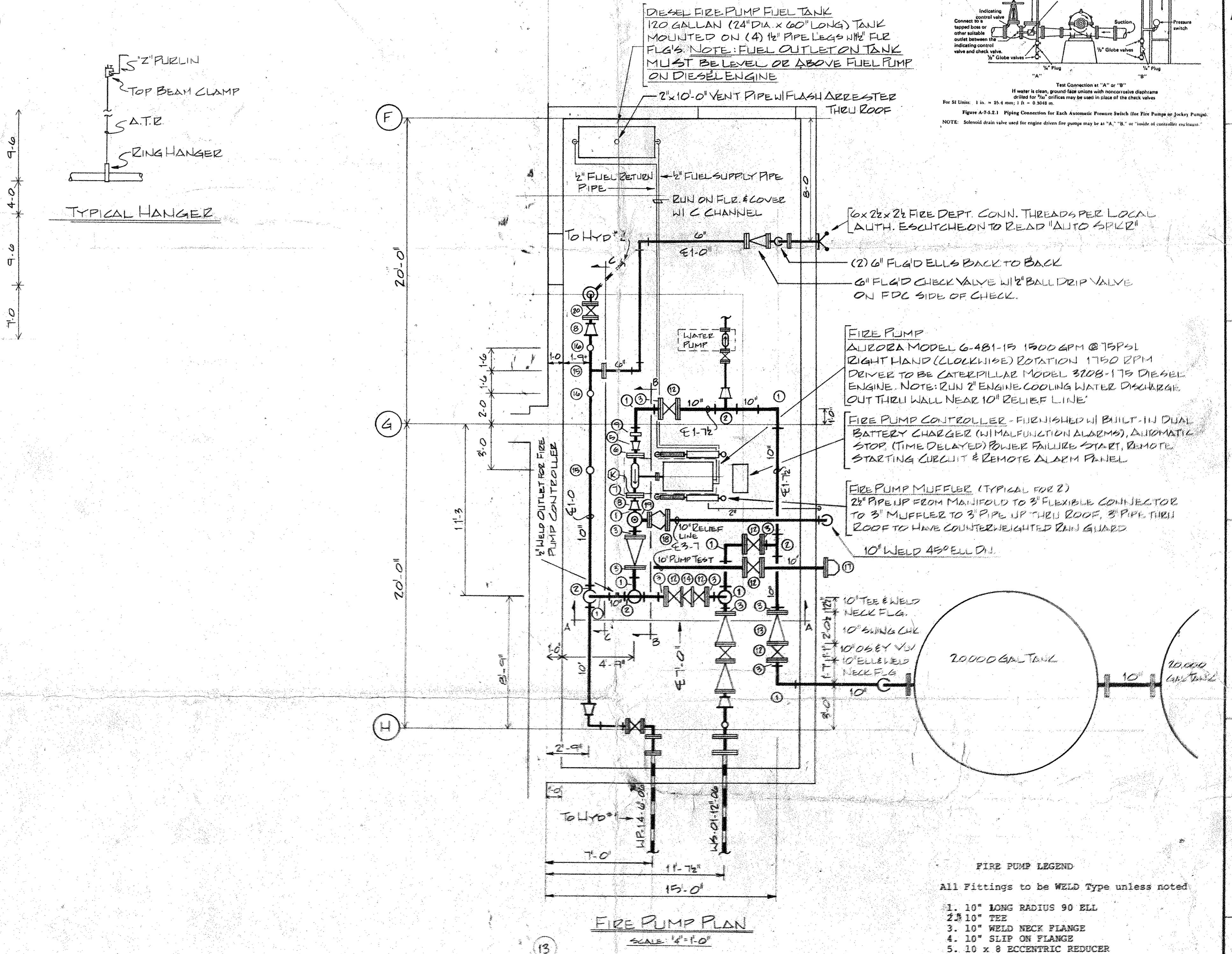
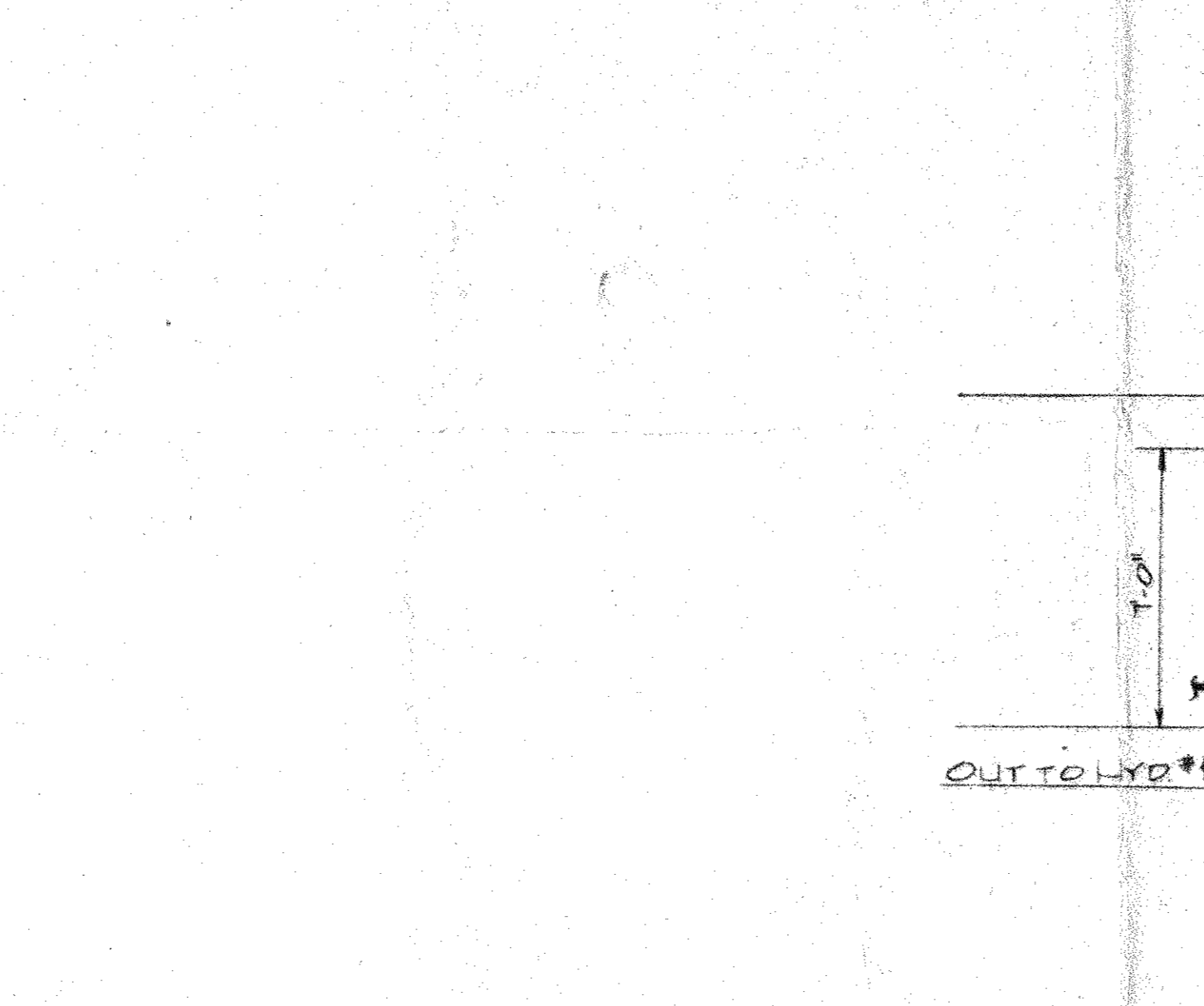
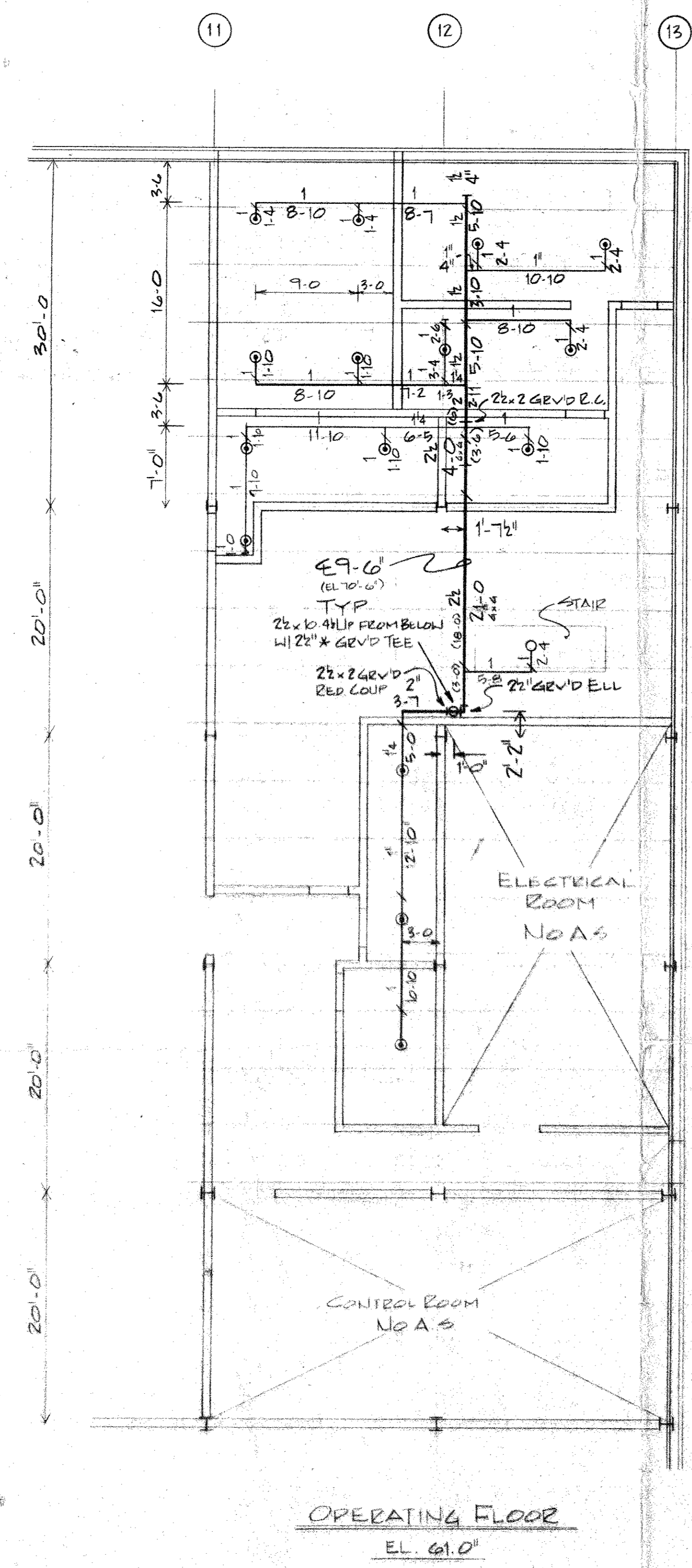


GENERAL NOTES

- ALL PIPING TO BE ASTM A53 GRADE A SCHEDULE 40 DOMESTIC
- ALL FITTINGS FOR 1" THRU 2" PIPE TO BE MALLEABLE 150# THREADED. ALL FITTINGS 2-1/2" THRU 6" TO BE GROOVE TYPE.
- HANGERS AS PER DETAILED ON DRAWING
- PIPE SIZING PER ORDINARY PIPE SCHEDULE NFPA 13 3-6 1987 EDITION

CONTRACT RESPONSIBILITIES	REFERENCE DWGS
ITEM	
STREET WATER CONNECTION	
UNDERGROUND WATER MAINS	
EXCAVATION	
BACKFILL	
WIRING	
PAINTING	

MATERIAL REQUIRED	TYPE	ORIG	TEMP	FINISH	CANOPY	SYMB	QTY
INTERIOR							15
							11
							6



FIRE PUMP LEGEND

- 10" LONG RADIUS 90 ELL
- 2 1/2" TEE
- 10" WELD NECK FLANGE
- 10" SLIP ON FLANGE
- 10 x 8 ECCENTRIC REDUCER
- 8" WELD NECK FLANGE
- 6" WELD NECK FLANGE
- 6 x 10 CONCENTRIC INCREASER
- 10" FLEXIBLE COUPLING
- 10 x 10 x 8 WELD TEE
- 10 x 10 x 6 WELD TEE
- 10" O.S. & Y. VALVE
- 10" FLANGED SWING CHECK VALVE
- 10" WATER CHECK VALVE
- 6 x 11 FLG'D OUTLET (1'-0" Face of Flange to centerline of 10" pipe)
- 4 x 9 FLG'D OUTLET (1'-0" Face of Flange to centerline of 10" pipe)

PUMP EQUIPMENT SUPPLIED BY GRINNELL®

- 10" FLANGED BUMP TEST HEADER w/(6) 2 1/2" Hose Outlets & Valves
- 6 x 10" ENCLOSED WASTE CONE
- 6" CLAYTON 2050 5 PRESSURE RELIEF VALVE
- 6" O.S. & Y. VALVE
- 4" O.S. & Y. VALVE
- 6" GRINNELL MODEL F302 DRY PIPE VALVE w/ BASIC TRIM (Includes (2) Pressure Gauges, 2" Main Drain, & Connection for Owners AIP), B2 PRESSURE SWITCH, GRINNELL MODEL F311 ACCELERATOR, & GRINNELL MODEL F324 AIR MAINTENANCE DEVICE
- 4" GRINNELL MODEL F200 DRY PIPE VALVE (As Above)
- 4" GRINNELL MODEL F200 ALARM VALVE w/ BASIC TRIM (Includes (2) Pressure Gauges, 2" Main Drain, & Retard Chamber), B2 PRESSURE SWITCH

NOTE: B2 PRESSURE SWITCH TO HAVE OPEN & CLOSED CONTACTS

Copy of submittal to be submitted by 7-16-87

CONTRACT NAME	SCALE
HARFORD COUNTY RESOURCE RECOVERY FACILITY	NOTED

DESCRIPTION	DATE
SYSTEM DESIGN DATA	29 JUNE 87
DESIGN DATA	43 DVE

APPROVALS	DATE
GRINNELL FIRE PROTECTION SYSTEMS	
EXECUTIVE OFFICES PROVIDENCE R.I.	