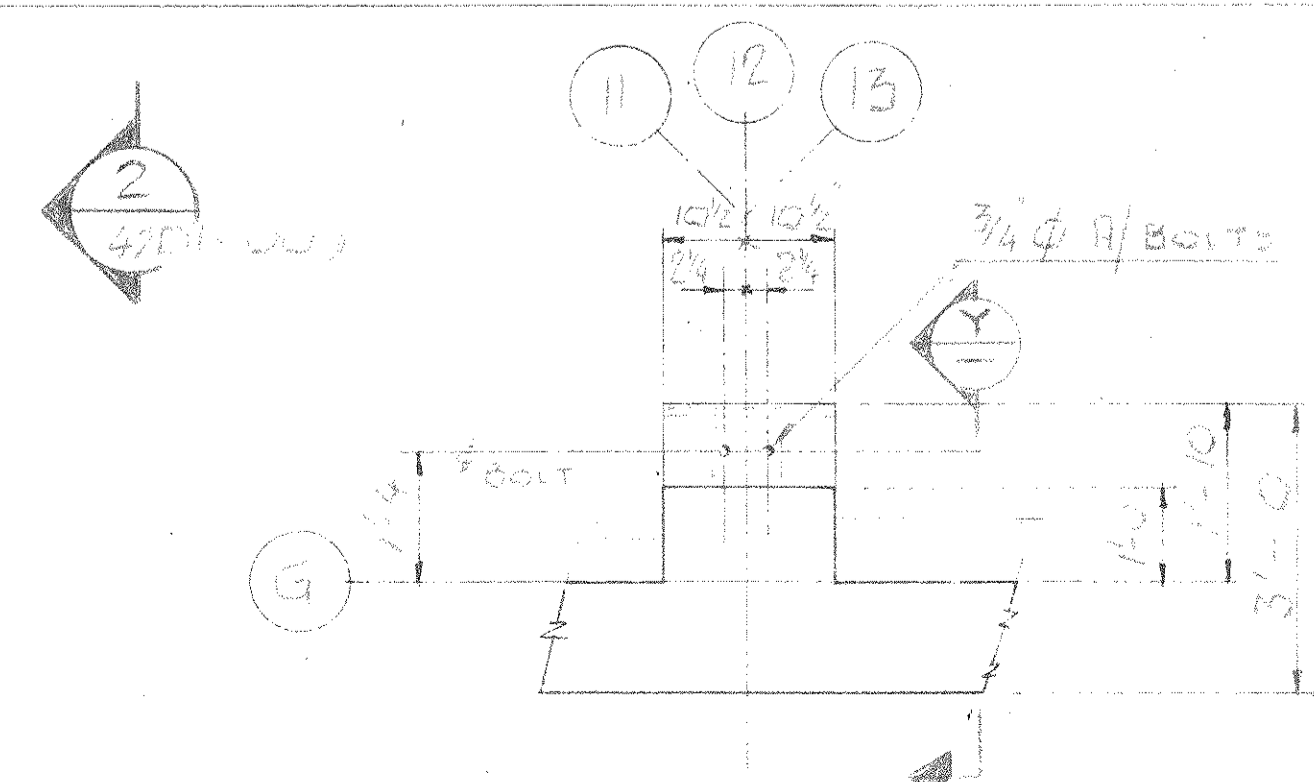


- 1) THE DRAWING IS TO BE READ IN CONJUNCTION WITH DWG'S 4201-001, 4201-002, 4201-003, 4201-004, 4201-005, 4201-006, 4201-007, 4201-008, 4201-009, 4201-010, 4201-011, 4201-012, 4201-013, 4201-014, 4201-015, 4201-016, 4201-017, 4201-018, 4201-019, 4201-020, 4201-021, 4201-022, 4201-023, 4201-024, 4201-025, 4201-026, 4201-027, 4201-028, 4201-029, 4201-030, 4201-031, 4201-032, 4201-033, 4201-034, 4201-035, 4201-036, 4201-037, 4201-038, 4201-039, 4201-040, 4201-041, 4201-042, 4201-043, 4201-044, 4201-045, 4201-046, 4201-047, 4201-048, 4201-049, 4201-050, 4201-051, 4201-052, 4201-053, 4201-054, 4201-055, 4201-056, 4201-057, 4201-058, 4201-059, 4201-060, 4201-061, 4201-062, 4201-063, 4201-064, 4201-065, 4201-066, 4201-067, 4201-068, 4201-069, 4201-070, 4201-071, 4201-072, 4201-073, 4201-074, 4201-075, 4201-076, 4201-077, 4201-078, 4201-079, 4201-080, 4201-081, 4201-082, 4201-083, 4201-084, 4201-085, 4201-086, 4201-087, 4201-088, 4201-089, 4201-090, 4201-091, 4201-092, 4201-093, 4201-094, 4201-095, 4201-096, 4201-097, 4201-098, 4201-099, 4201-100.
- 2) FOR GENERAL NOTES SEE DWG'S 4201-001 TO 4201-005.
- 3) 8" SLAB FOR ASH BINS TO HAVE 3/4" EMERY TOP INTEGRAL TOPPING.

Hold floor  
 slab. Between  
 Grd. 11-13  
 For Equipment  
 Pads.

FOOTING	SCHEDULE			
FOOTING N°	1	2	3	4
N° OF FOOTINGS	2	4	6	3
FTG. SIZE	12" x 12" x 12"	12" x 12" x 12"	12" x 12" x 12"	12" x 12" x 12"
FTG. FT. FL.	#5 @ 12" EW	#5 @ 12" EW	#5 @ 12" EW	#5 @ 12" EW
COL. STEEL	1" x 1" x 3/16"	1" x 1" x 3/16"	1" x 1" x 3/16"	1" x 1" x 3/16"



NO.	DESCRIPTION	DATE	BY
4	WALL ON LINE G & C... REVISED AS NOTED	10/10/86	
3	REVISED AS NOTED	11/10/86	
2	SEC. 22, 24 & 25 ADDED... REVISED	9/10/86	
1	REVISED AS SHOWN... REVISED	8/14/86	
0	REVISED AS SHOWN... REVISED	8/14/86	

TEMPORARY PERMIT NO. 771  
 TO PRACTICE ENGINEERING IN  
 THE STATE OF MARYLAND

**W.P. LONDON AND ASSOCIATES LIMITED**  
 CONSULTING ENGINEERS  
 NIAGARA FALLS

HARFORD COUNTY RESOURCE RECOVERY FACILITY - HARFORD COUNTY, MARYLAND

**FOUNDATION PLAN  
 OPERATING FLOOR**

**Consumat Systems, Inc.**  
 RICHMOND, VIRGINIA U.S.A.

SCALE: 1/4" = 1'-0"  
 DATE: 11/10/86  
 DRAWN: W.P. LONDON  
 CHECK: S.E.S.  
 APPR.: P. LONDON  
 SHEET: 2 OF 2