

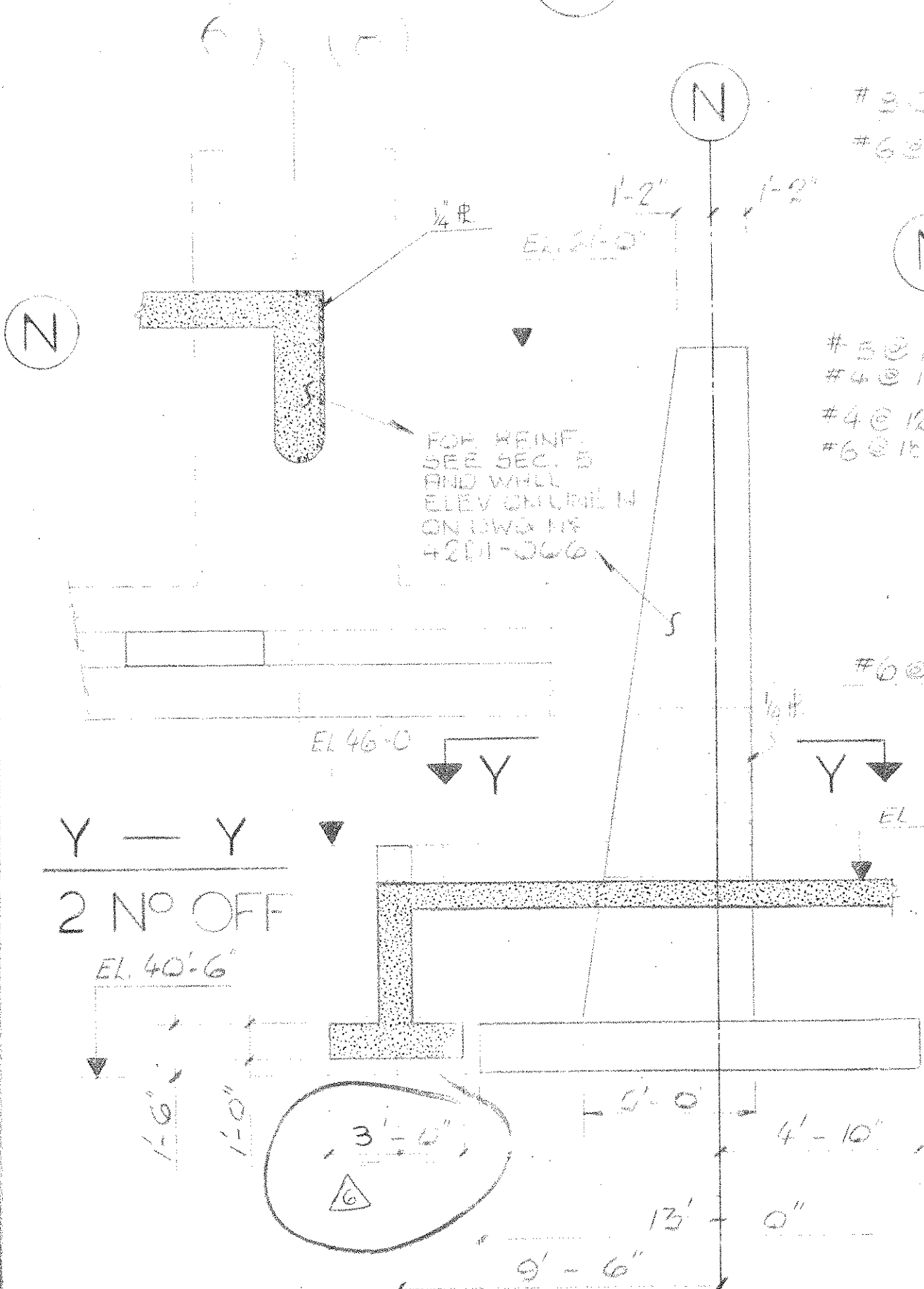
SECTION 1  
001

SECTION 2  
001

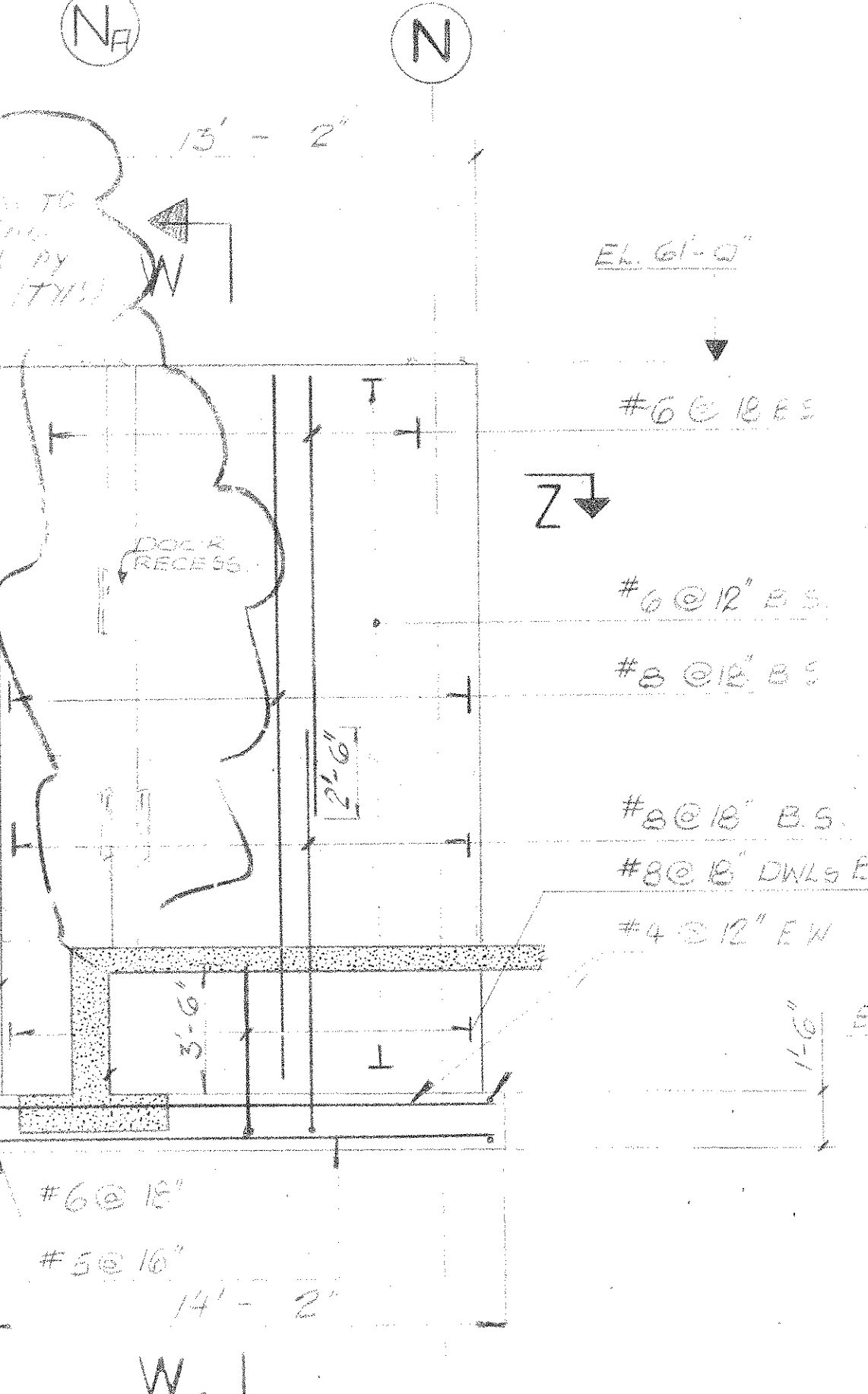
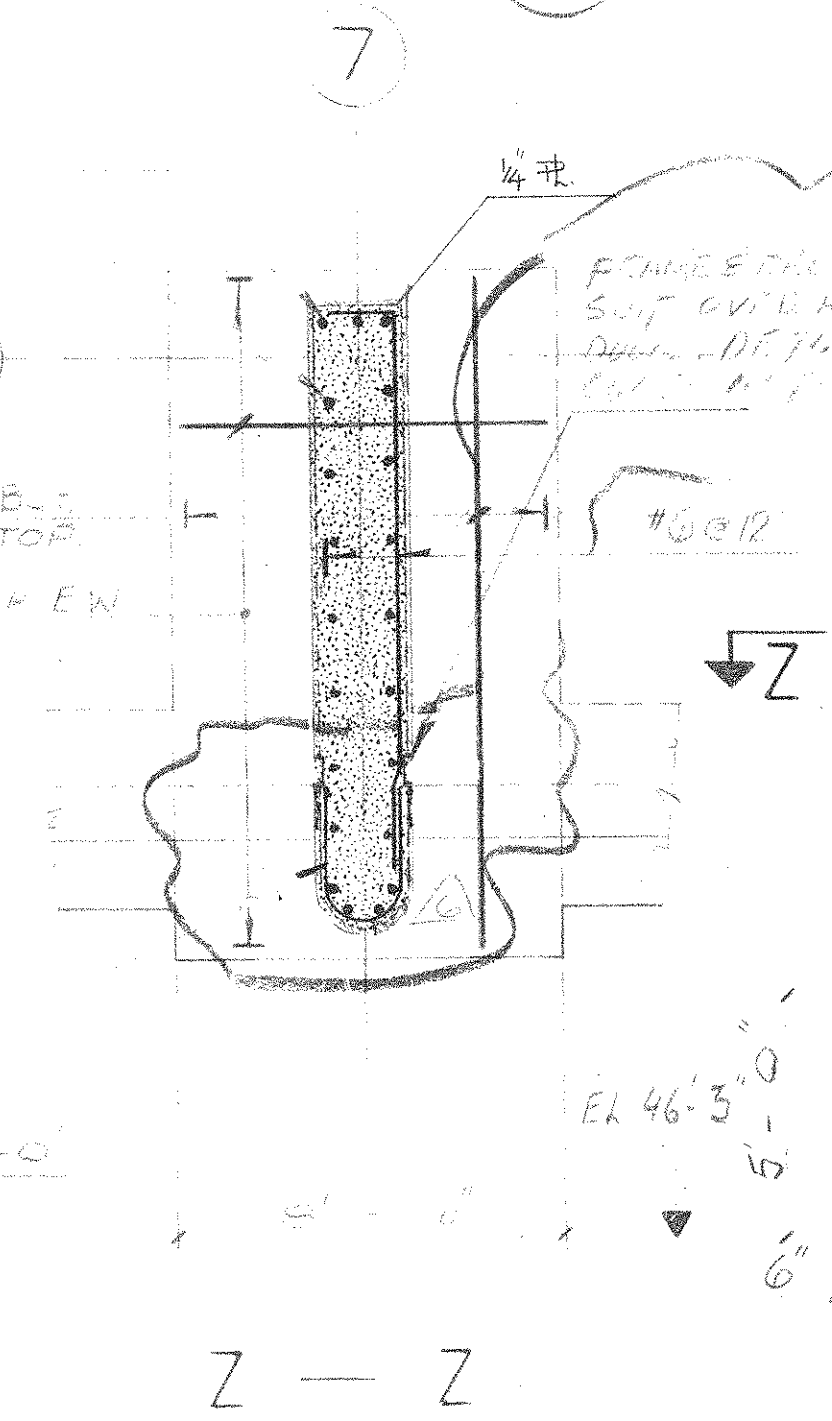
SECTION 3  
001

SECTION 4  
001

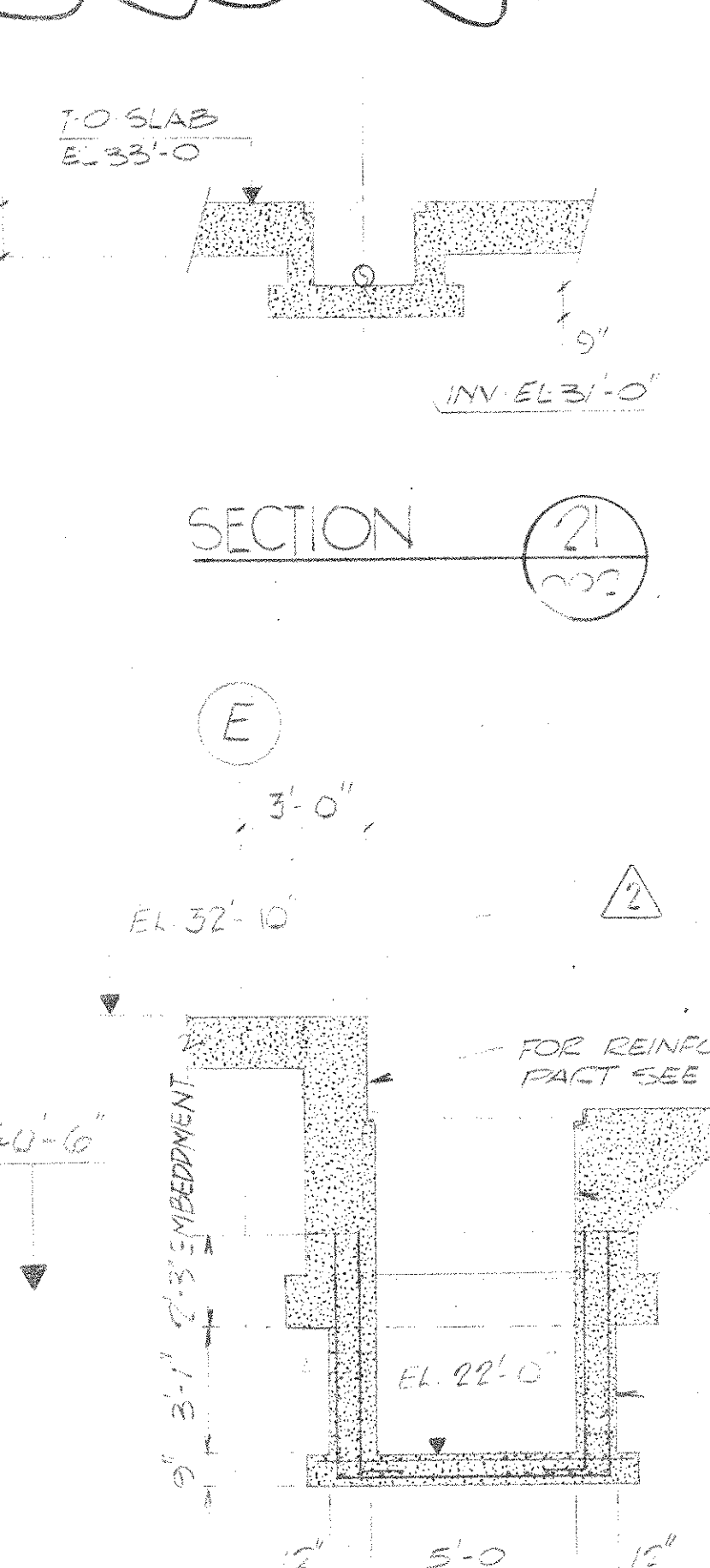
SECTION 5  
001



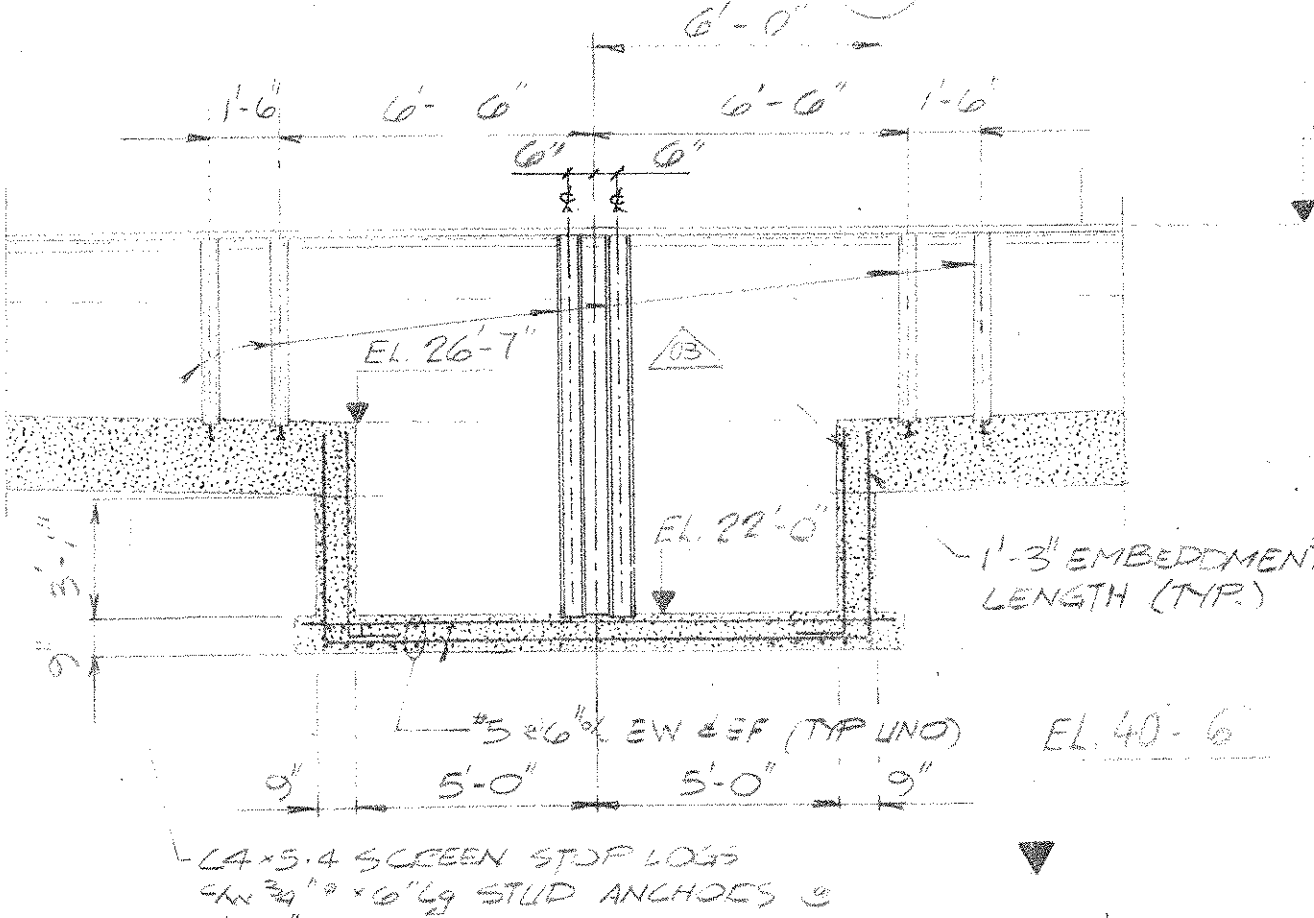
SECTION 6  
001



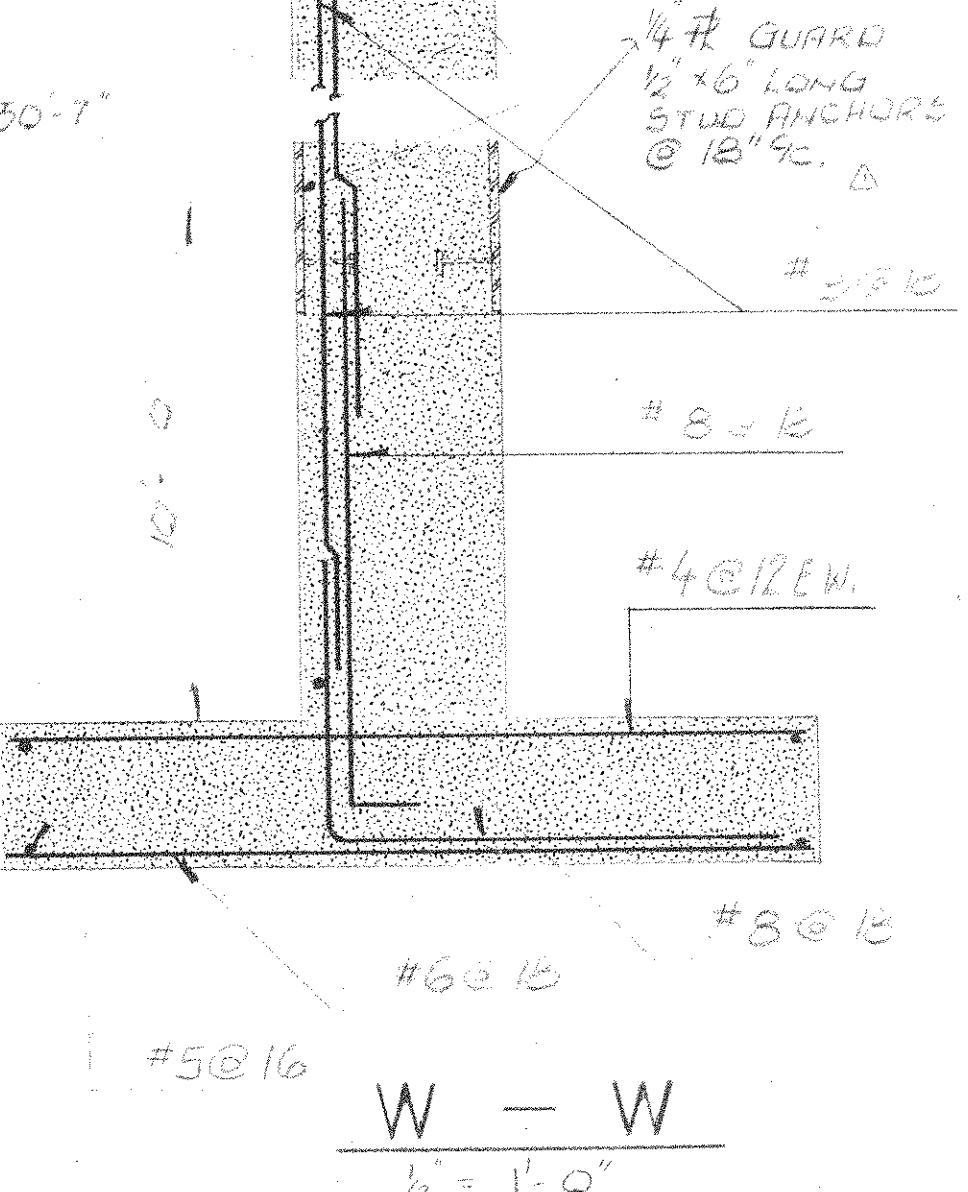
SECTION 7  
001



SECTION 23  
002



SECTION 24  
002



SECTION 7  
001

FOR CHAIRS TO BE REIN. SEE PRINTED DETAILS. TYPE: DWG. 7222-2-V-42-DW1 FOR REVISION TO THIS DRAWING SEE C.S.I. HANDBOOK OUT 11/84

7	ORIGINAL TRANSFERRED TO C.S.I.	NOV 19/86	KL
6	CHANGES FOR THE 1986 SHOWN DRAWING CHANGES MADE 11/86	06/19/86	KL
5	LINE OF SEAT REVISED TO SHOW PLATFORM STEELWALL THICKNESS	10/10/86	KL
4	SEC. 1, 2, 3, 4, 5 REVISED AS NOTED		KL
3	SCREEN LOCATION REVISED.	AUG. 15/86	KL
2	ADD SECT. 21, 24 & 25 SUMP DETAILS	AUG. 09/86	DEF
1	UPDATED AS SHOWN; MOLD REMOVED ABOVE EL 31'-0	AUG 01/86	KL
0	REVISION FOR UNITARY IN UP TO EL 31'-0	JULY 01/86	KL

TEMPORARY PERMIT NO. 771 TO PRACTICE ENGINEERING IN THE STATE OF MARYLAND

**W.P. LONDON AND ASSOCIATES LIMITED**  
CONSULTING ENGINEERS  
NIAGARA FALLS

HARFORD COUNTY RESOURCE RECOVERY FACILITY - HARFORD COUNTY, MARYLAND

**FOUNDATION SECTIONS**

**Consumat Systems, Inc.**  
RICHMOND, VIRGINIA U.S.A.

SCALE 1/4" = 1'-0"  
DATE 10/15/86  
DO NOT SCALE

DRAWN BY KLR/SSZ  
CHK. BY [Signature]  
APPR. BY [Signature]

DRAWING NO. 7624-000-42D1-001  
SHEET 1 OF 2