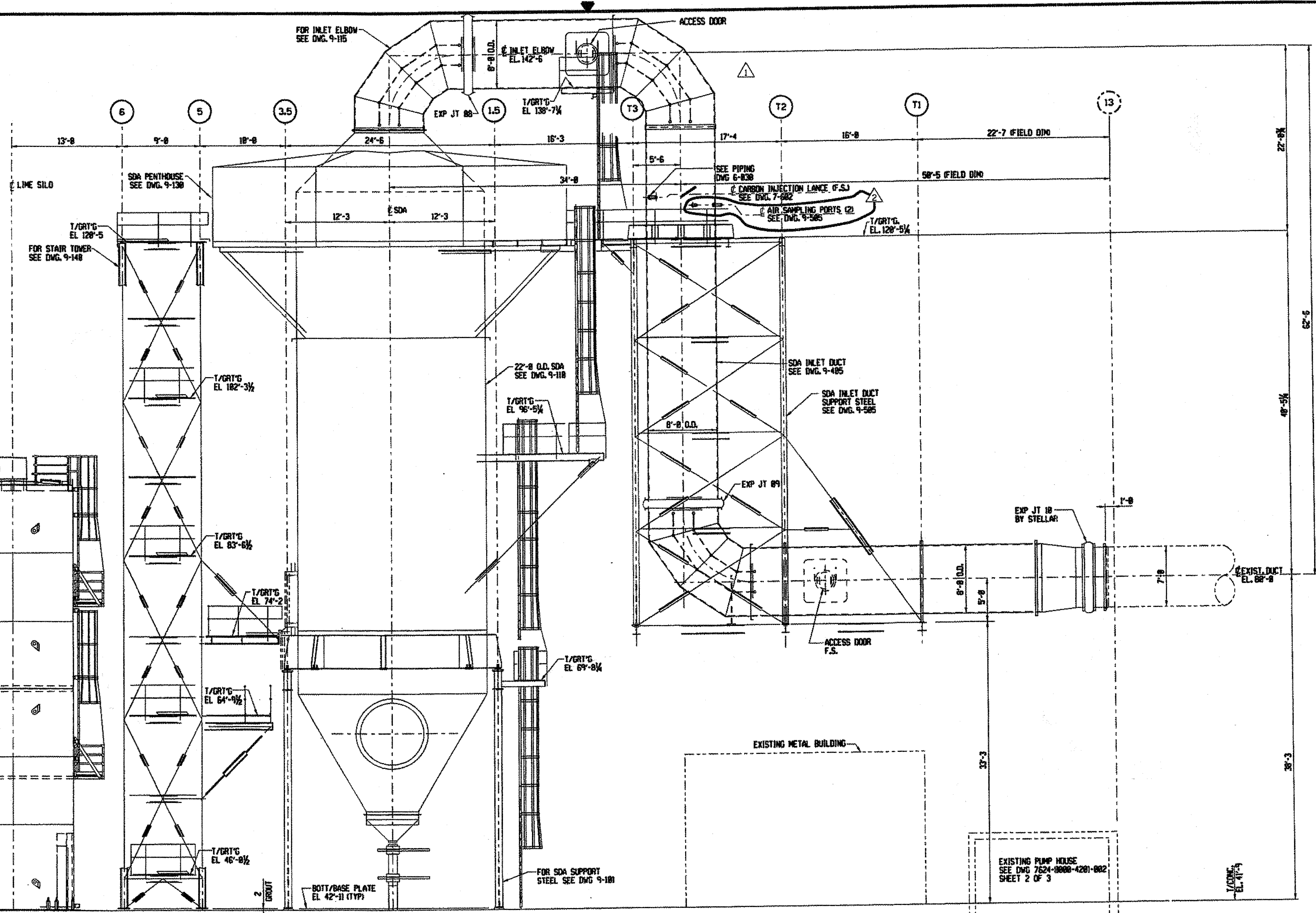



3898-9-004



SECTION B-B
9-001
LOOKING SOUTH

 * 3 8 9 8 9 0 0 4 *		This print and all information thereon is the property of Wheelabrator A.P.C. It is confidential and proprietary and must not be used, made public, or copied unless authorized in writing by Wheelabrator A.P.C. It is transmitted to you with the explicit understanding that it is subject to return upon request.		NOTE: FABRICATION, MANUFACTURING, OR DETAILING MAY PROCEED ONLY WHEN DRAWING IS ISSUED OR AUTHORIZED FOR SUCH PURPOSES.		DRN. BY: JLB DATE: 11-29-04 CHD. BY: PCB DATE: 1-7-05 APPV. BY: HNS DATE: 2-24-05 SCALE: 3/8" = 1'-0" CONF. BY: DATE:		STELLAR/HARFORD WTE FACILITY RETROFIT JOPPA, MD GENERAL ARRANGEMENT SECTION B-B TRANSMITTAL No. 3898C031		Wheelabrator Air Pollution Control Inc. 3898-9-004 REV. NO. 2 PLDT DATE: 07/12/2005 03:24:21 PM LAST PLOTTED BY: rreuterweld							
NO.	REVISION	DATE	NO.	REVISION	DATE	REV.	DATE	TO	FOR	REV.	DATE	TO	FOR	REV.	DATE	TO	FOR
0	DRAWING CHECKED	1-7-05				0	2-24-05	STELLAR	CONSTRUCTION								
1	CHANGED SDA INLET DUCT SUPPORT STEEL	3-22-05				1	3-28-05	STELLAR	CONSTRUCTION								
2	ADD AIR SAMPLING PORTS	7-11-05				2	07-12-05	STELLAR	CONSTRUCTION								