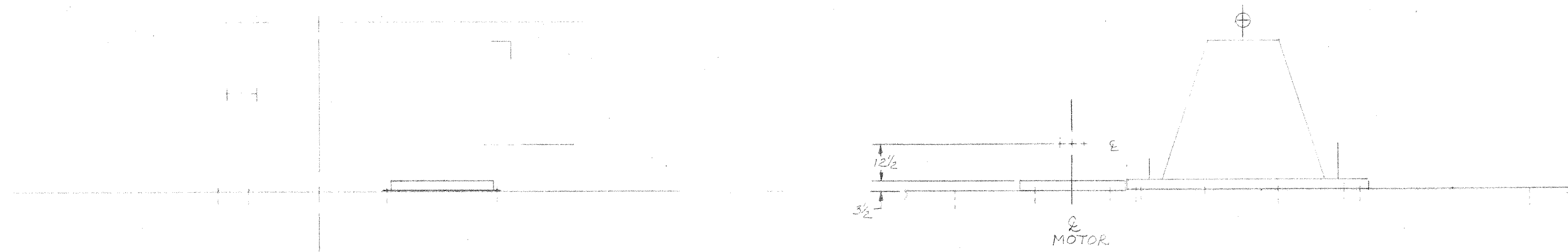


GROUP		PARTS LIST		
02	01	ITEM	PART	DESCRIPTION

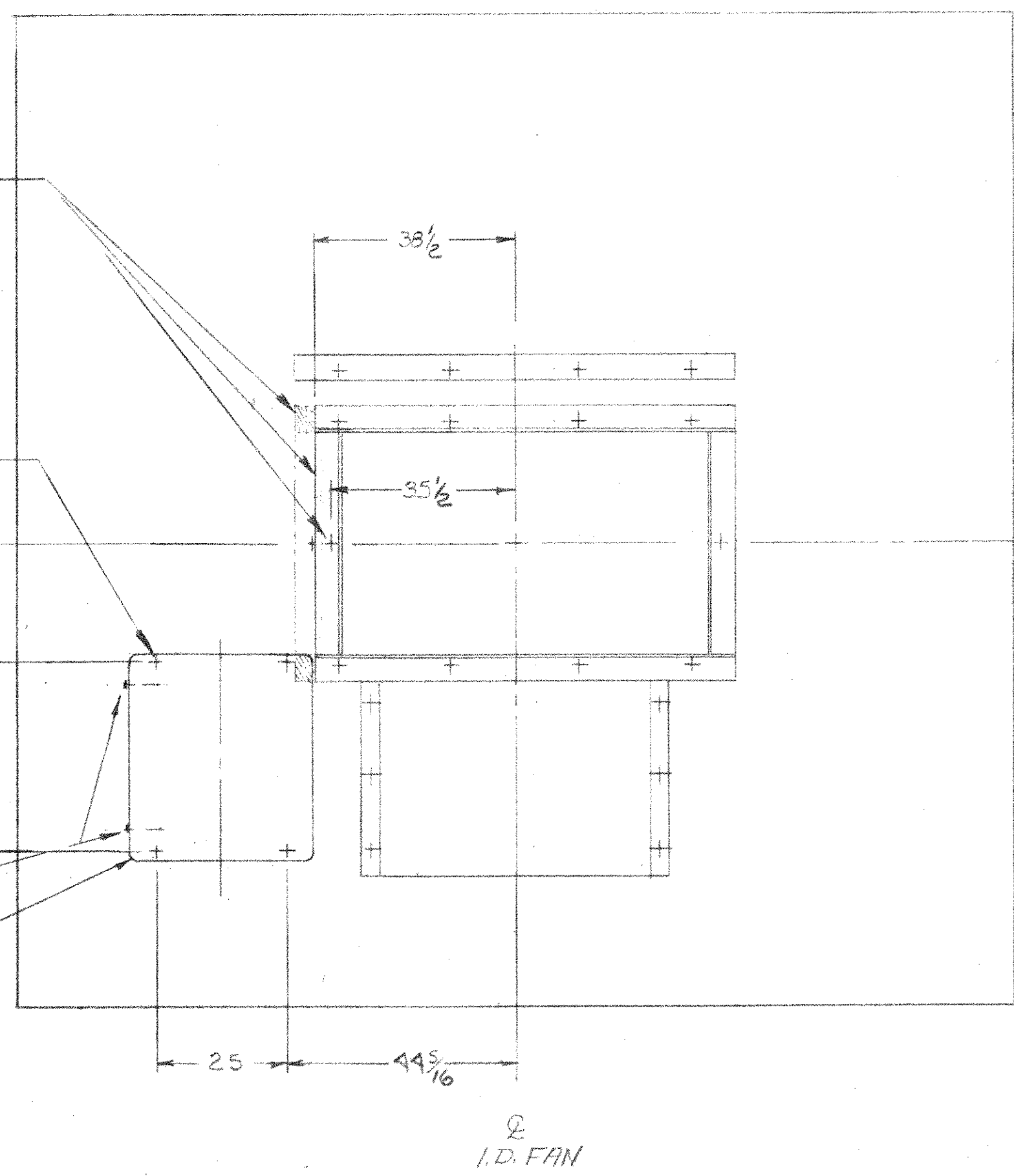


NOTE: ALL WORK TO BE DONE TO BOTH I.D. FANS.

REWORK FAN BASE:
 1) MOVE ANGLE (SHADED) AS NOTED.
 2) TRIM SIDE ANGLES
 3) SET NEW ANCHOR AT POSITION SHOWN

ANCHOR - 5/8" DIA (4)
 w/ 3" TH'D. PROJECTION

ADJUSTING SCREWS
 MOTOR BASE - 509 H2 FRAME
 #A-3595-954-509



I.D. FAN FND. #7624-0000-41P2-D1D

E DISCHARGE

I.D. FAN

Field Issued
 Date: JUN 25 1987

ISSUED FOR CONSTRUCTION

AUTH. SIG. KES DATE 6/22/87

TOLERANCES:
 NORMAL ±
 EXCEPT AS NOTED.
 HOLE LOCATION DIMENSIONS MUST BE HELD TO ±

PROJ NAME	PROJ NO.	GRP.	B/M	D/L	NEXT HIGHER ASSY
HARFORD	P4805				

THIS DRAWING IS THE PROPERTY OF CONSUMAT SYSTEMS, INC., AND IS TO BE USED ONLY FOR PRODUCING ITEMS ON ORDER FOR CONSUMAT SYSTEMS, INC. SUBJECT TO RETURN UPON DEMAND AND IS NOT TO BE PRINTED, PHOTOGRAPHED, COPIED, REPRODUCED, LOANED OR USED IN ANY MANNER WITHOUT WRITTEN PERMISSION OF CONSUMAT SYSTEMS, INC.

DR R. HUFF
 DATE 6/22/87
 CHK
 DATE
 APP
 APP

Consumat Systems, Inc.
 RICHMOND, VIRGINIA U.S.A.

TITLE
 I.D. FAN REWORK (ON SITE)
 ENERGY DUCT ASSEMBLY

SCALE 1/2" = 1'-0"	SIZE D	DWG NO. 28G-0040	REV
REFERENCE 7K #BC-A1121-3	SHEET OF		

REV	REVISION	DATE	DR	CHK	APP	APP	DO NOT SCALE
2							
3							
4							
5							
6							
7							