

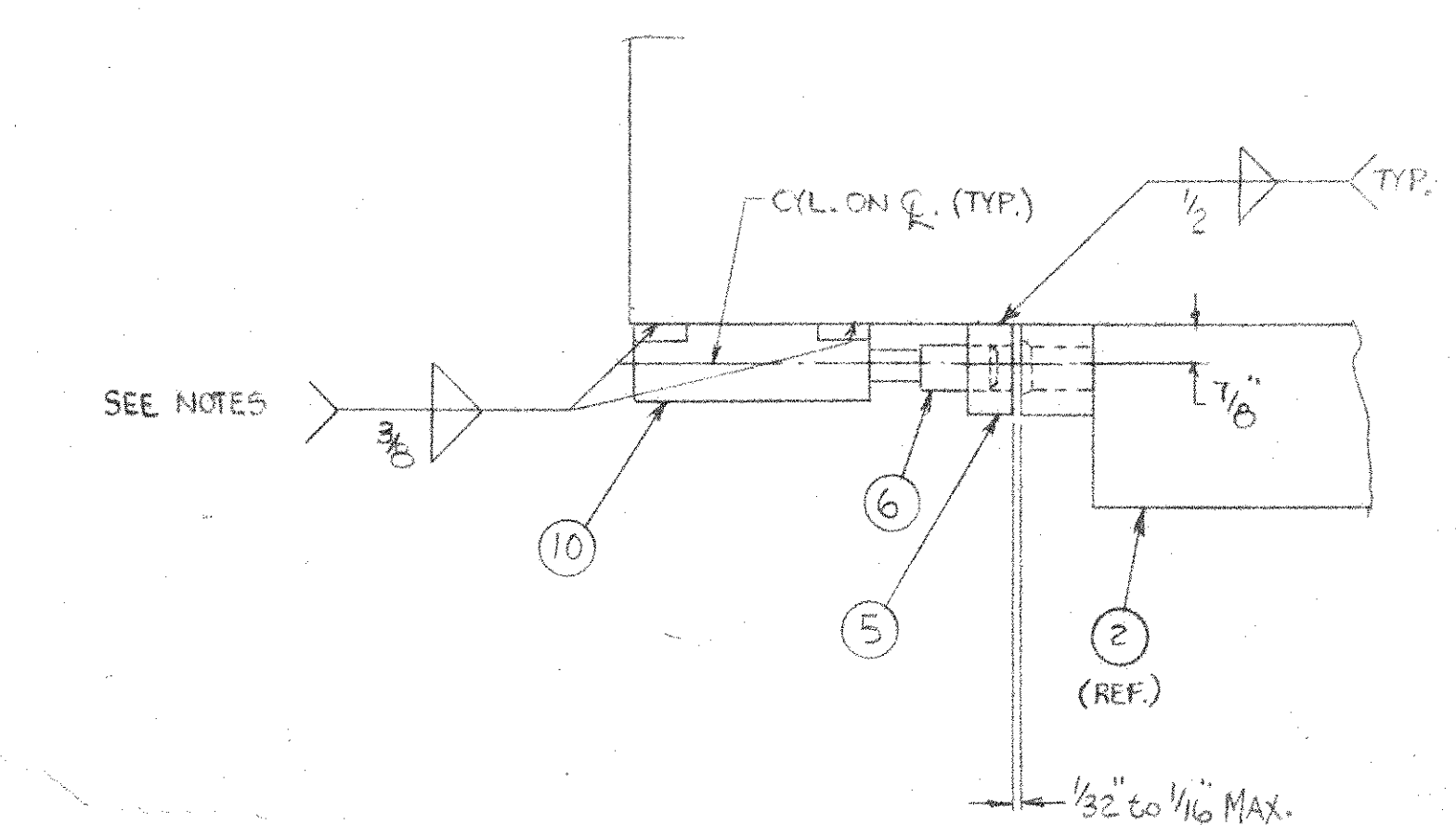
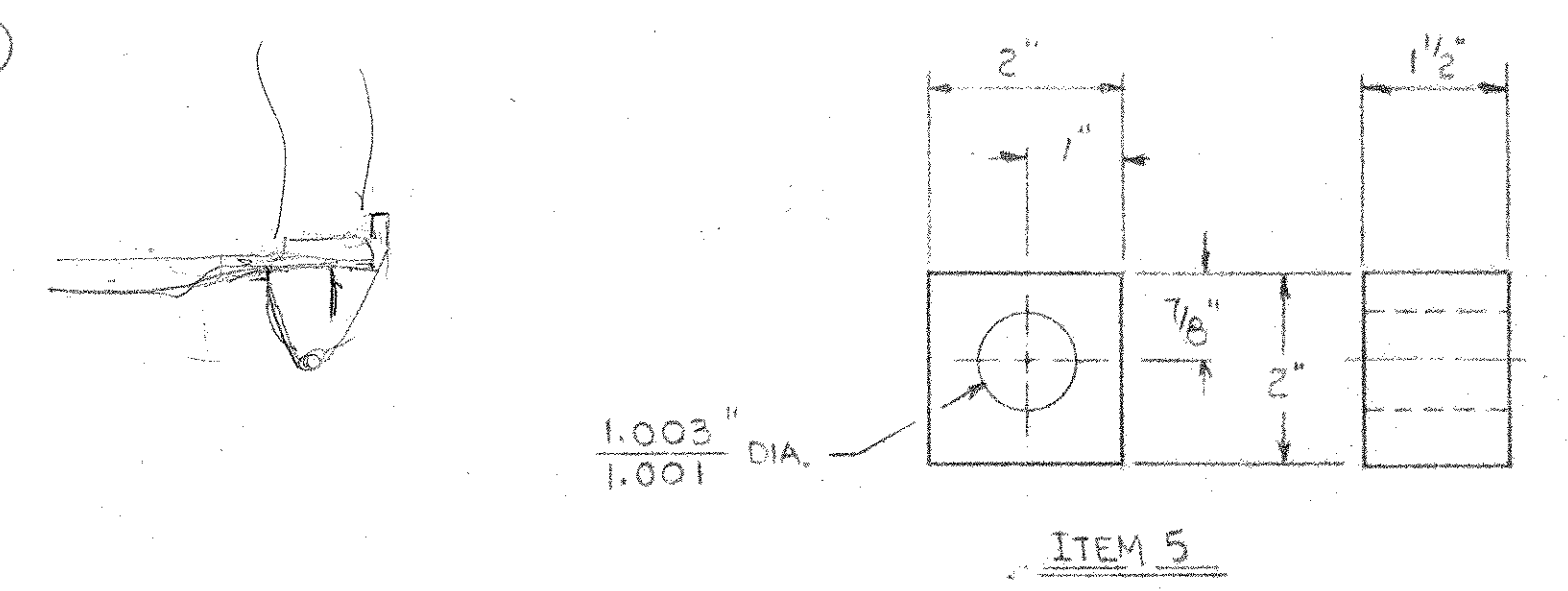
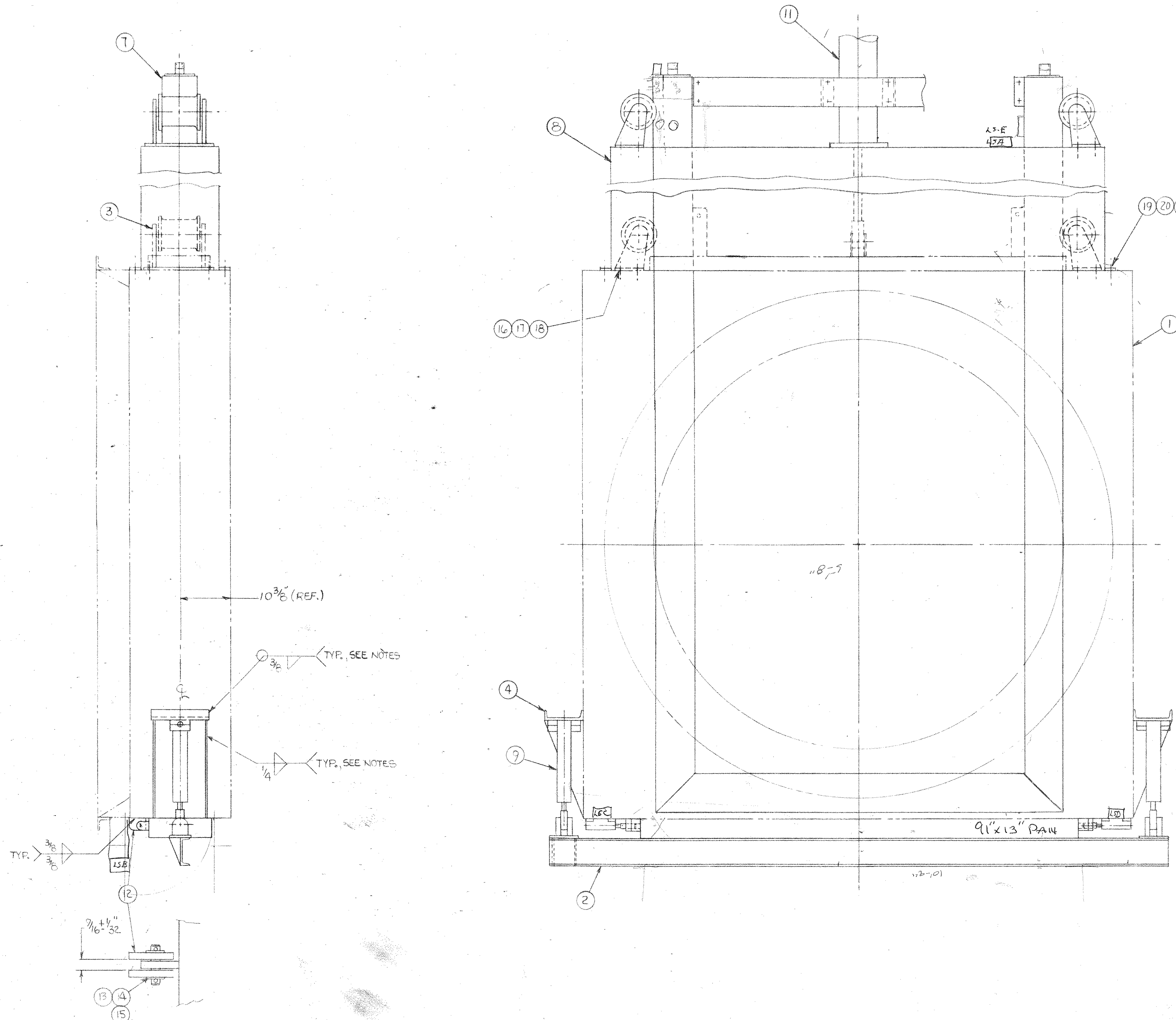
NOTES:

- 1) CENTER THE DOOR (ITEM 2) OVER THE OPENING IN THE BOTTOM. MOUNT CYL. (ITEM 9) TO CYL. SUPPORT (ITEM 4) MOUNT THE ASSY TO THE SIDE OF THE STR. DUCT SECTION & TACK WELD.
- 2) LOCATE AND TACK WELD ALL HINGE P'S.
- 3) LOCATE & POSITION SMALL CLAMPING CYL. ON THE Q. OF THE CLEAN OUT DOOR. TACK WELD INTO POSITION (NOTE: SHIMMING MAY BE REQUIRED TO ALIGN THE 1" DIA ROD INTO THE HOLE IN THE DOOR ASSY. WHEN ENGAGED).

4) OPERATE ALL CYLS. TO ENSURE PROPER OPERATION. WELD COMPLETE

GROUP	QTY	ITEM	PART	DESCRIPTION
REF.	1	D26A-0053-G01		STR. SECTION-HOT GAS DUCT.
1	2	C-26C-0172-G01		CLEAN OUT DOOR
4	3	C-26C-0170-G01		WHEEL ASS'Y.
2	4	C-26C-0171-G01		CYLINDER SUPPORT
2	5			1 1/2" X 2" X 2"
2	6	B-26C-0173-G01		PIN
REF.	7	D26C-0166-G01		ISOLATION GATE
REF.	8	C26D-0088-G02		COVER
2	9			HYD. CYL. 2HHTR 12 1/2 AKV
2	10			HYD. CYL. 1 1/2 HHSL2AV
1	11			HYD. CYL. 5HHFF X108AKVY
8	12	B-26C-0173-G02		PLATE
4	13	B-26C-0173-G03		PIN
8	14			WASHER 5/16"
8	15			COTTER PIN 3/16 X 1 1/2"
16	16			1/4" X 1" F.B. X 1 1/2" W/ 9/16" HOLE IN CENTER
16	17			1/2" LOCKWASHER
16	18			H.H.C.S. 1/2" 13UNC X 1 1/2" LG
20	19			H.H.C.S. 3/4" 10UNC X 1 3/4" LG
20	20			3/4" LOCKWASHER
20	21			3/4" FLAT WASHER

D  
C  
B  
A



CSI PROCESS SPEC NUMBER	P4805	GROUP	01	B/M	4635	D/L	2815	NEXT HIGHER ASSY	
ISOLATION GATE ASSY. CS-3000E (84 1/2"?)									
<b>Consumat Systems, Inc.</b> RICHMOND, VIRGINIA U.S.A.					SCALE 1"=1'-0" DRAWN RHH DRAWING NO. 842 DATE 9-25-82 CHK LBN 10/7/82 D-26C-0169 DO NOT SCALE APPR. SHEET 01 REV.				

THIS DRAWING IS THE PROPERTY OF CONSUMAT SYSTEMS INC. AND IS TO BE USED ONLY FOR PRODUCING ITEMS ON ORDER FOR CONSUMAT SYSTEMS INC. SUBJECT TO RETURN UPON DEMAND AND IS NOT TO BE PRINTED, PHOTOGRAPHED, COPIED, REPRODUCED, LOANED OR USED IN ANY WAY WITHOUT WRITTEN PERMISSION OF CONSUMAT SYSTEMS INC.