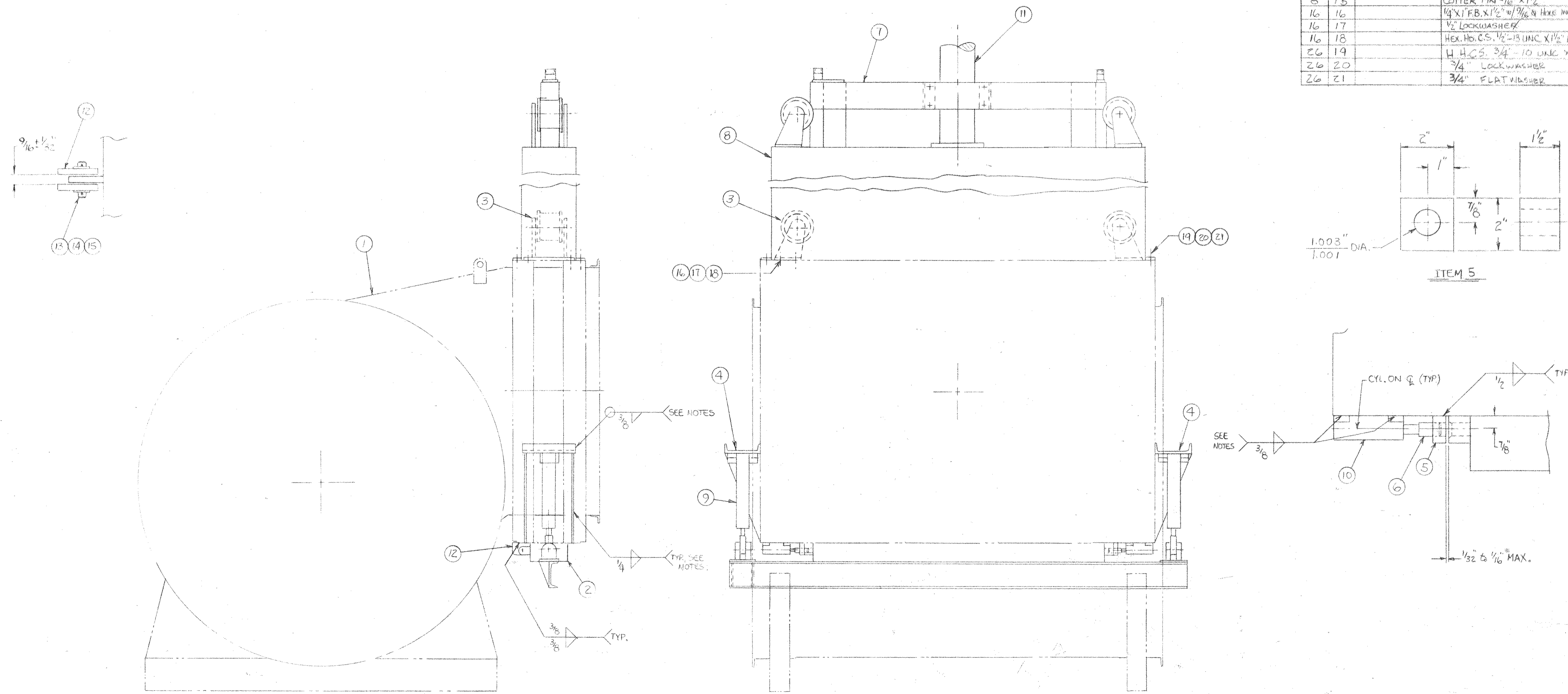


NOTES:

- 1) CENTER THE DOOR (ITEM 2) OVER THE OPENING IN THE BOTTOM. MOUNT CYLINDER (ITEM 9) TO CYL. SUPPORT (ITEM 4) MOUNT THE ASSY. TO THE SIDE OF THE BOILER TEE & TACK WELD.
- 2) LOCATE AND TACK WELD ALL HINGE P'S
- 3) LOCATE & POSITION SMALL CLAMPING CYL. ON THE Q. OF THE CLEAN OUT DOOR. TACK WELD INTO POSITION. (NOTE: SHIMMING MAY BE REQUIRED TO ALIGN THE 1" Ø ROD INTO THE HOLE IN THE DOOR AS CYL. WHEN ENGAGED.
- 4) OPERATE ALL CYLS. TO ENSURE PROPER OPERATION. WELD COMPLETE

GROUP		PARTS LIST		
Q2	Q1	ITEM	PART	DESCRIPTION
REF.	1	D-26B-0035-G01	BOILER TEE REFRACTORY	
1	2	C-26C-0178-G01	CLEAN OUT DOOR	
4	3	C-26C-0179-G01	WHEEL ASSY.	
2	4	C-26C-0171-G01	CYLINDER SUPPORT	
2	5		1 1/2" X 2" X 2"	
2	6	B-26C-0173-G01	PIN	
REF.	7	D-26C-0175-G01	ISOLATION GATE	
REF.	8	C-26D-0088-G01	COVER	
2	9		HYD. CYL. 2HHTR12 1/2 AKV	
2	10		HYD. CYL. 1" BHHS12AV	
1	11		HYD. CYL. 5HHFFX93AKVY	
8	12	B-26E-0173-G02	PLATE	
4	13	B-26C-0173-G03	PIN	
8	14		WASHER 5/8"	
8	15		COTTER PIN 3/16" X 1 1/2"	
16	16		1/4" X 1" F.B. X 1 1/2" W/ 3/16" & HOLE IN CENTER	
16	17		1/2" LOCKWASHER	
16	18		HEX. HD. CS. 1/2"-13 UNC X 1 1/2" LG.	
26	19		H. H. CS. 3/4"-10 UNC X 1 3/4" LG.	
26	20		3/4" LOCKWASHER	
26	21		3/4" FLAT WASHER	



CSI PROCESS SPEC NUMBER	GROUP	B/M	D/L	NEXT HIGHER ASSY
	01	4657	3833	
ISOLATION GATE ASSY.				93"
				CS3000 E
		Consumat Systems, Inc.		
RICHMOND, VIRGINIA U.S.A.				
SCALE	DRAWN	DATE	BY	REVISION
	FHH	10-3-86		
DATE	CHK	DATE	BY	REVISION
10-3-86	LRD	10/8/86		
O NOT SCALE		APPR		SHEET OF
				D-26C-0180

THIS DRAWING IS THE PROPERTY OF CONSUMAT SYSTEMS INC. AND IS TO BE USED ONLY FOR PRODUCING ITEMS ON ORDER FOR CONSUMAT SYSTEMS INC. SUBJECT TO RETURN UPON DEMAND AND IS NOT TO BE PRINTED, PHOTOGRAPHED, COPIED, REPRODUCED, LOANED OR USED IN ANY MANNER WITHOUT THE WRITTEN PERMISSION OF CONSUMAT SYSTEMS INC.