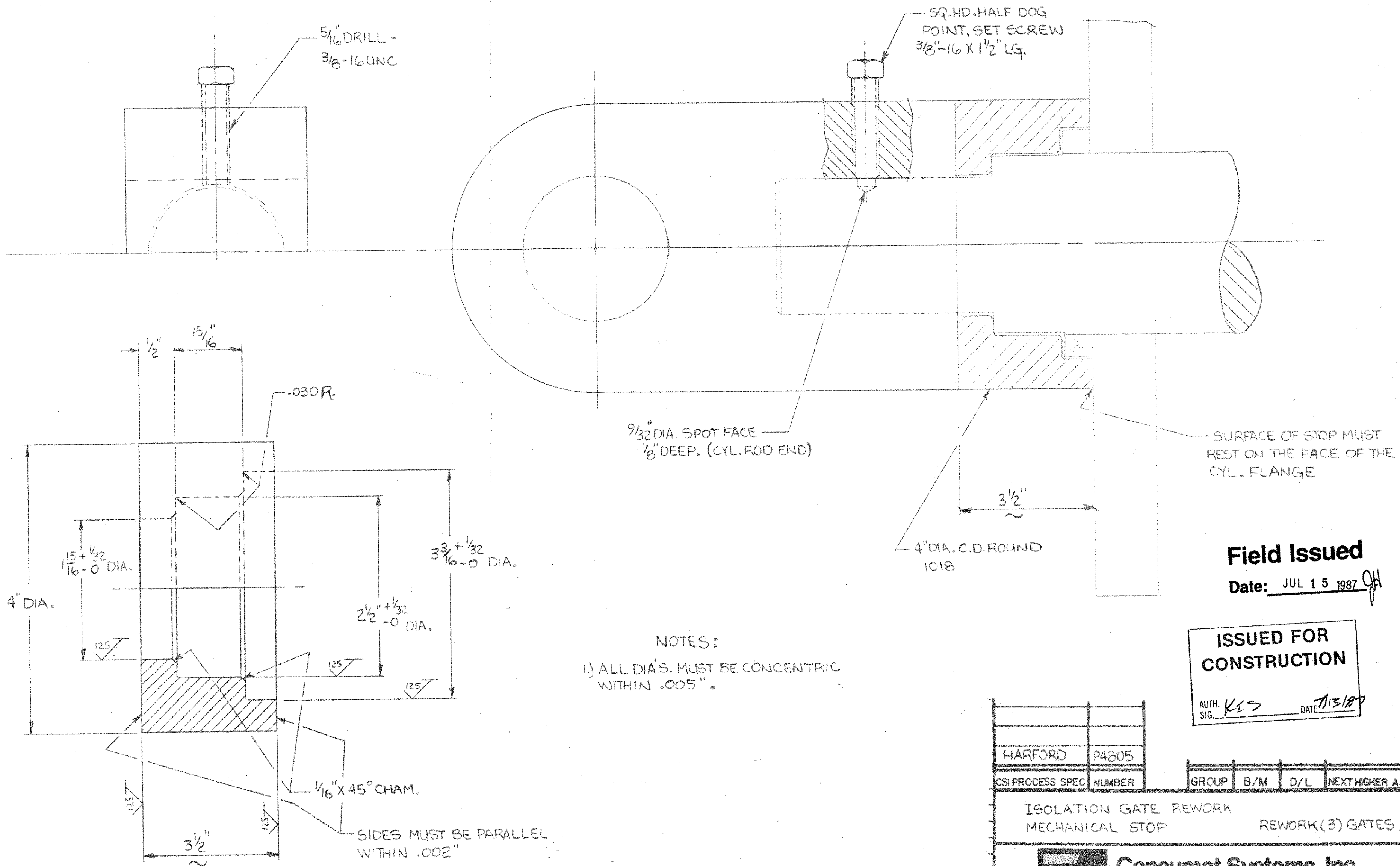


GROUP		PARTS LIST		
02	01	ITEM	PART	DESCRIPTION



NOTES:
 1) ALL DIA'S. MUST BE CONCENTRIC WITHIN .005"

Field Issued
 Date: JUL 15 1987

ISSUED FOR CONSTRUCTION
 AUTH. SIG. *KES* DATE *7/15/87*

HARFORD	P4805	GROUP	B/M	D/L	NEXT HIGHER ASSY
CSI PROCESS SPEC	NUMBER				

ISOLATION GATE REWORK
 MECHANICAL STOP Rework(3) GATES.

Consumat Systems, Inc.
 RICHMOND, VIRGINIA U.S.A.

SCALE NONE	DRAWN RHH	DRAWING NO.
DATE 6-22-87	CHK.	C-SK71387-1
DO NOT SCALE	APPR.	SHEET 1 OF 1

THIS DRAWING IS THE PROPERTY OF CONSUMAT SYSTEMS INC., AND IS TO BE USED ONLY FOR PRODUCING ITEMS ON ORDER FOR CONSUMAT SYSTEMS INC. SUBJECT TO RETURN UPON DEMAND AND IS NOT TO BE PRINTED, PHOTOGRAPHED, COPIED, REPRODUCED, LOANED OR USED IN ANY WAY WITHOUT WRITTEN PERMISSION OF CONSUMAT SYSTEMS INC.

NO.	REVISION	DATE	BY	REV.
-----	----------	------	----	------