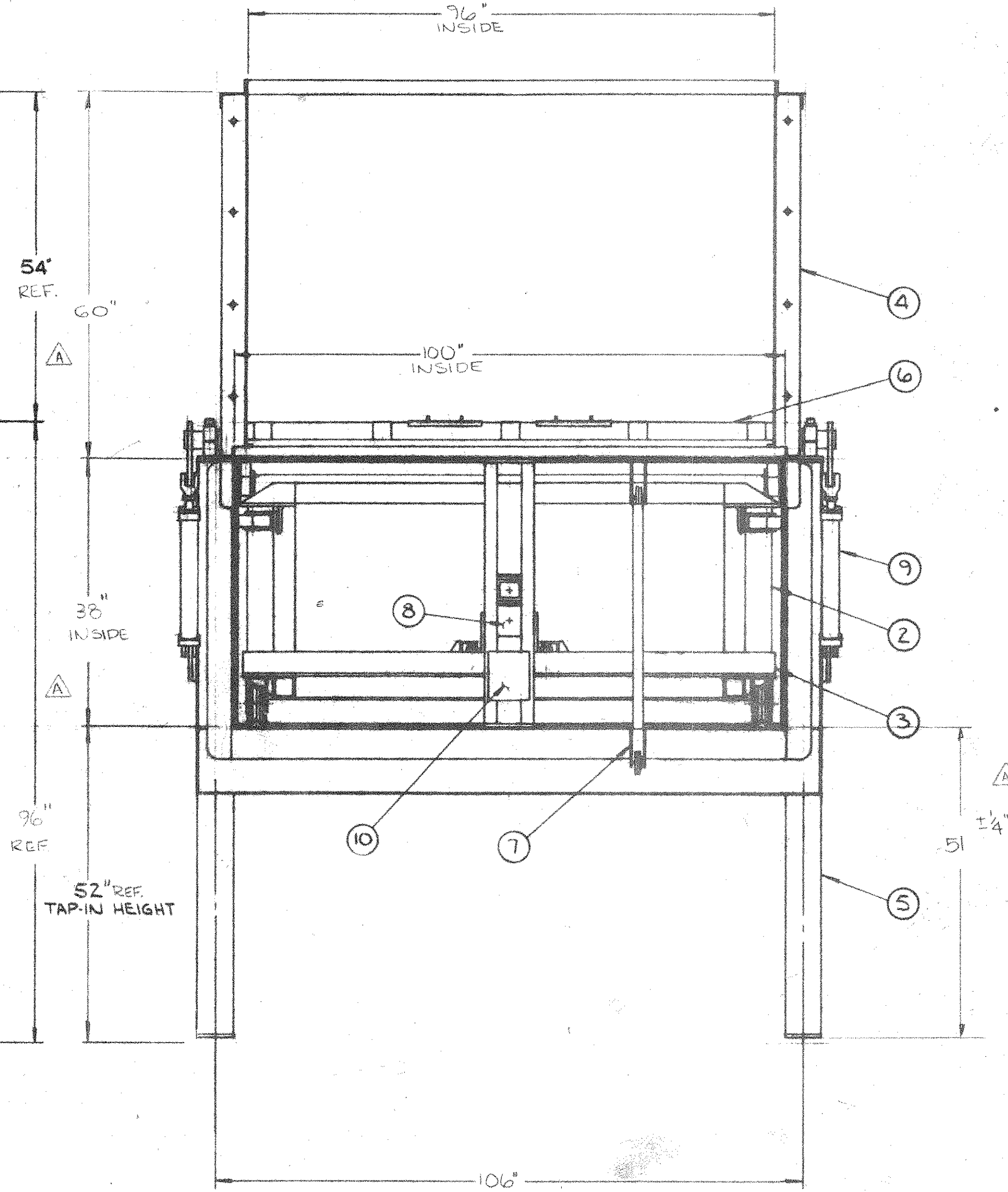
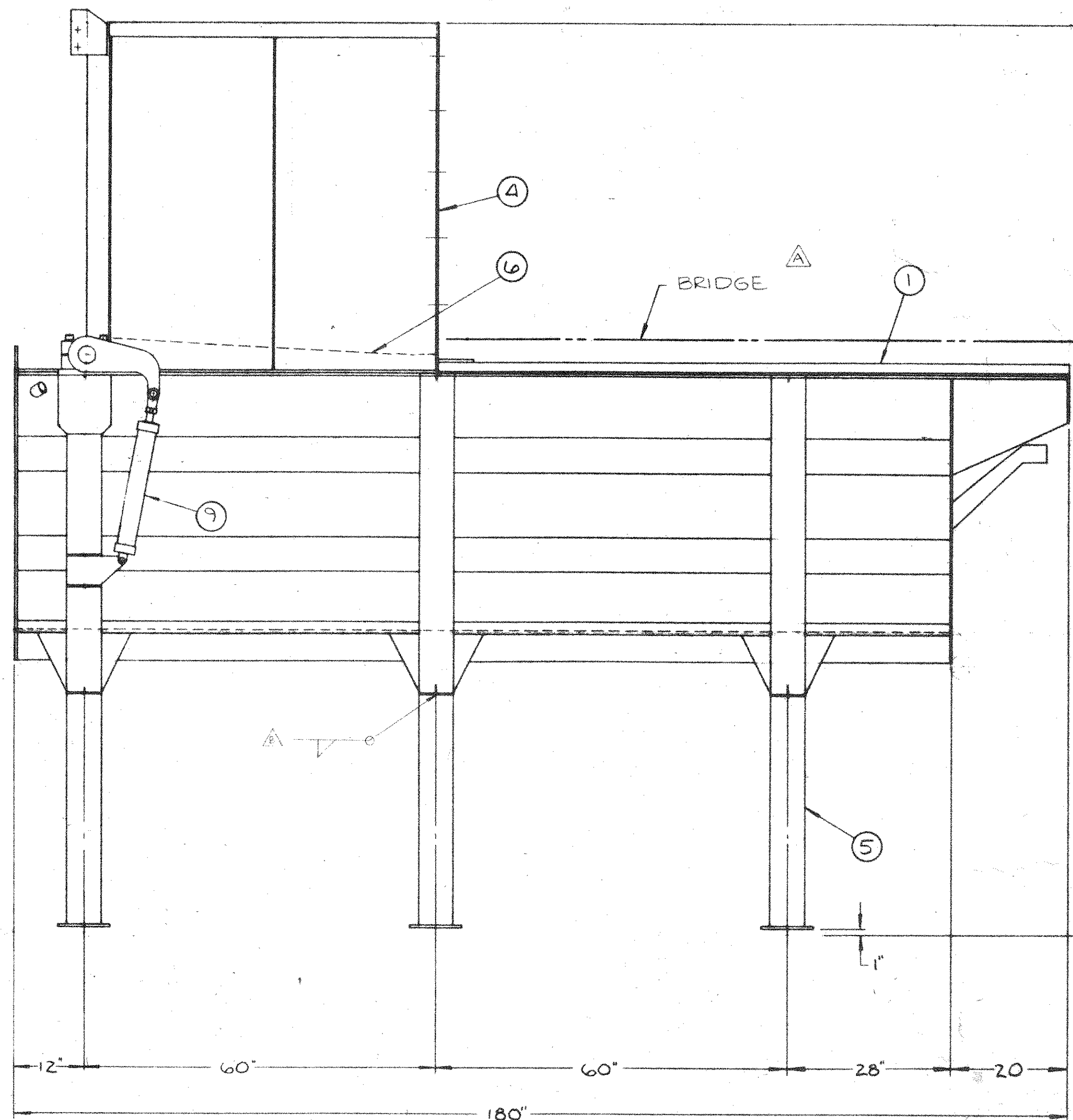


WHEEL CLEARANCES
 A - TOP FRONT $\frac{1}{8} \pm \frac{1}{16}$
 B - TOP REAR $\frac{1}{16} \pm \frac{1}{16}$
 C - SIDE $\frac{1}{8} \pm \frac{1}{16}$

GROUP		PARTS LIST		DESCRIPTION
Q2	Q1	ITEM	PART	
1	1	D-10A-0201-G01	CHUTE ASSEMBLY	
1	2	D-10B-0004-G01	RAM ASSEMBLY	
HCT.	3	D-10D-0011-G01	HYDRAULIC CYLINDER CARRIER	
1	4	D-10C-0001-G01	CHUTE EXTENSION	
6	5	A-10U-0002-G01	LEGS	
1	6	D-10A-0202-G01	DOOR	
1	7	D-10A-0103-G01	LIMIT SWITCH ASSEMBLY	
2	8		SHEFFER CYLINDER 4HH5L62K K=2" ROD, ROD EYE REF 241420 (L11)	
2	9		SHEFFER CYLINDER 2 1/2 HNC18CCK K=3/8" ROD, CLEVIS CLS A1000 (L08)	
1	10	H-15	CAUTION DECAL	
REF	11	A-10-0050-G01	SHIM PACKAGE	
4	12	B-10D-0023-G01	SHIM PACKAGE	
2	13	B-10D-0023-G02	SHIM PACKAGE	



SHIPPING WEIGHT LBS.

TOLERANCES:
 NORMAL $\pm \frac{1}{16}$ " EXCEPT AS NOTED. TOLERANCES APPLY PARTICULARLY TO OVER-ALL DIMENSIONS AND MUST NOT BE ACCUMULATIVE. HOLE LOCATION DIMENSIONS MUST BE HELD TO $\pm \frac{1}{32}$ "

THIS DRAWING IS THE PROPERTY OF CONSUMAT SYSTEMS INC. AND IS TO BE USED ONLY FOR PRODUCING ITEMS ON ORDER FOR CONSUMAT SYSTEMS INC. SUBJECT TO RETURN UPON DEMAND AND IS NOT TO BE PRINTED, PHOTOGRAPHED, COPIED, REPRODUCED, LOANED OR USED IN ANY WAY WITHOUT WRITTEN PERMISSION OF CONSUMAT SYSTEMS INC.

REV.	REVISION	DATE	BY
C	ADD OR STICKER	9-20-80	DMW
B	ADDED Q2 TOLERANCES	9-11-80	DMW
A	WHEEL CLEARANCES ADDED		
A	GENERAL UPDATE - DIM 51 REV ADDED	7-3-86	CSARD

HARFORD	P-4805	G01	4333	3612	
CSI PROCESS SPEC NUMBER		GROUP	B/M	D/L	NEXT HIGHER ASSY
ML-1300 MS LOADER ASSEMBLY					
Consumat Systems, Inc. RICHMOND, VIRGINIA U.S.A.		SCALE	DATE	DRAWN	CHK.
		DO NOT SCALE	APPR.	D-10-0071	
				SHEET	OF