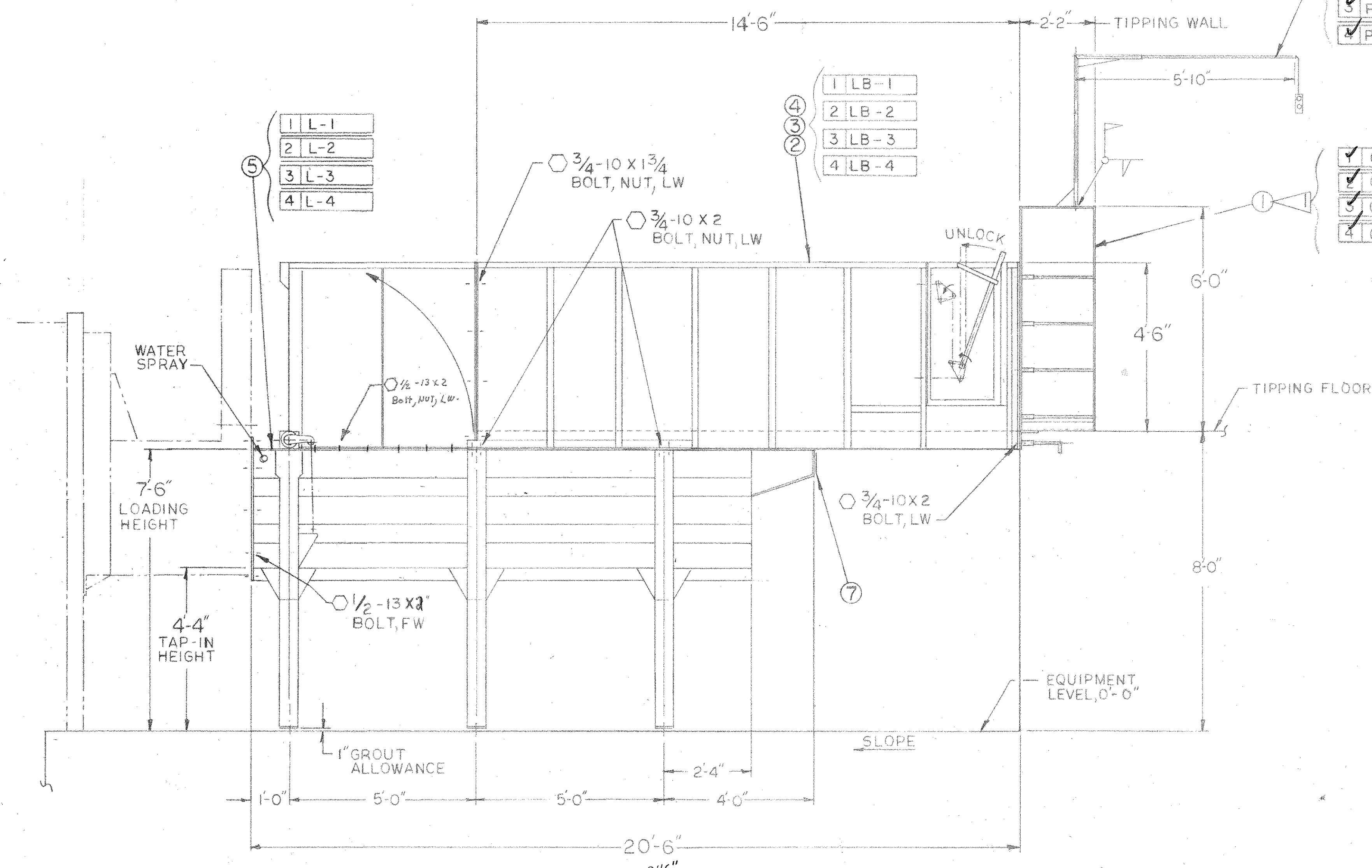


GROUP	DE	GI	ITEM	PART	DESCRIPTION
1	1	1	1	D11A-0037-601	CORNER GUARD
—	—	—	2	D11-0056-601	LOADING BRIDGE (LH GR)
—	—	—	3	D11-0056-602	LOADING BRIDGE (LH GR)
1	—	—	4	D11-0056-602	LOADING BRIDGE (2DF)
1	1	1	5	D10-0071-601	LOADER - ML-1300-MS
1	1	1	6		PENDENT STATION SUPPORT
1	1	1	7	H 15	CAUTION DECAL



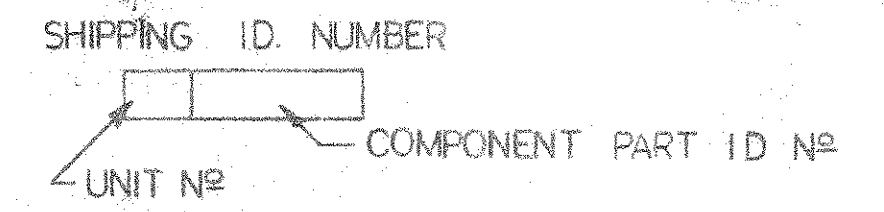
NOTES:

- ① ITEM ① IS SET IN TIPPING WALL CONCRETE. SHIPPING BRACE TO REMAIN IN PLACE UNTIL CONCRETE HAS SET-UP.
- ② "O" INDICATES FASTENERS PROVIDED BY BOLT SCHEDULE.
- ③ FLOOR OF LOADING BRIDGE TO TIPPING FLOOR TO BE SMOOTH AND FLUSH.

- PS-1
- PS-2
- PS-3
- PS-4

- CG-1
- CG-2
- CG-3
- CG-4

GO 1: RIGHT HAND DOOR
 GO 2: LEFT HAND DOOR - AS SHOWN
 GO 3: TWO DOORS



THIS DRAWING IS THE PROPERTY OF CONSUMAT SYSTEMS INC. AND IS TO BE USED ONLY FOR PRODUCING ITEMS ON ORDER FOR CONSUMAT SYSTEMS INC. SUBJECT TO RETURN UPON DEMAND AND IS NOT TO BE PRINTED, PHOTOGRAPHED, COPIED, REPRODUCED, LOANED OR USED IN ANY MANNER WITHOUT WRITTEN PERMISSION OF CONSUMAT SYSTEMS INC.

HARFORD	P4805	D04C-0089		
CSI PROCESS SPEC NUMBER	GROUP	B/M	D/L	NEXT HIGHER ASSY
LOADER / BRIDGE ASSEMBLY				
		RICHMOND, VIRGINIA U.S.A.		
SCALE 3/4" = 1'-0"	DRAWN E.H.H.	DRAWING NO. D10A-0214		
DATE 9-2-86	CHK	APPR	SHEET	OF

NO.	REVISION	DATE	BY