

8

7

6

5

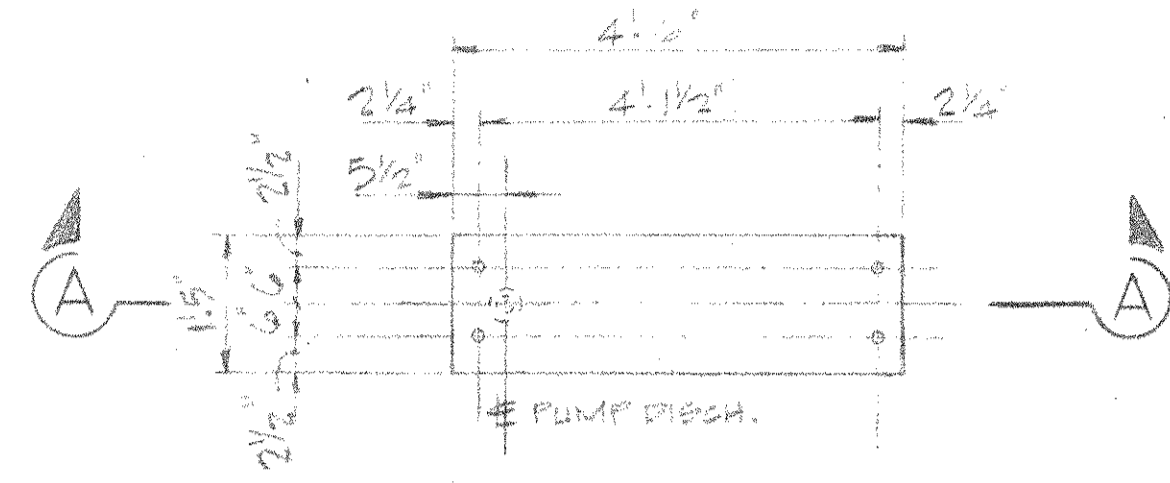
4

3

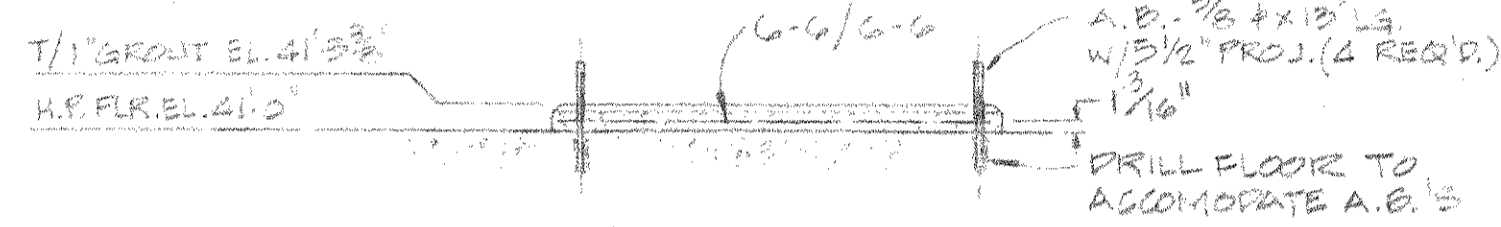
2

1

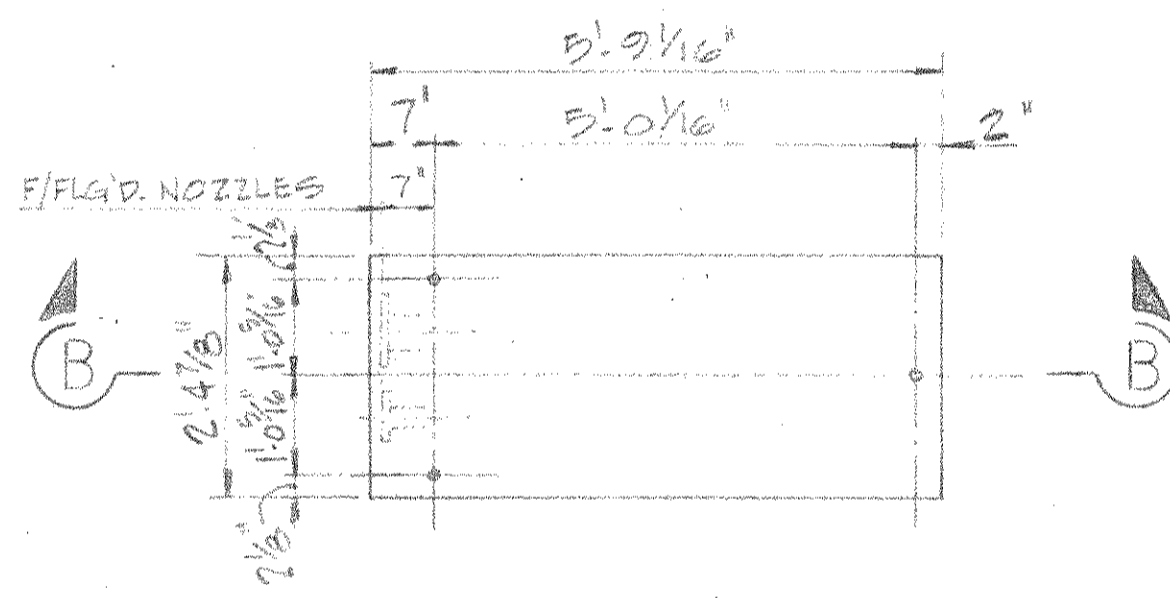
GROUP		PARTS LIST		
02	01	ITEM	PART	DESCRIPTION



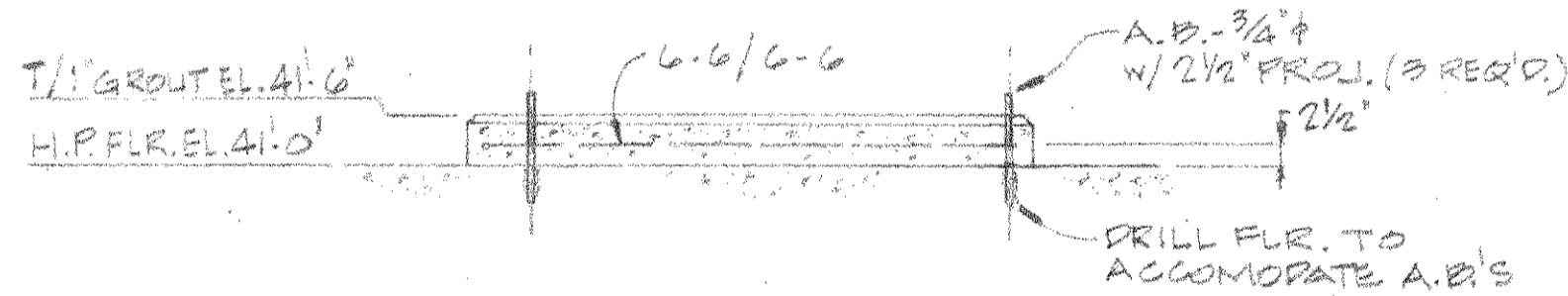
**CDP#1 & CDP#2
FOUNDATION**
SCALE: 1/2" = 1'-0"



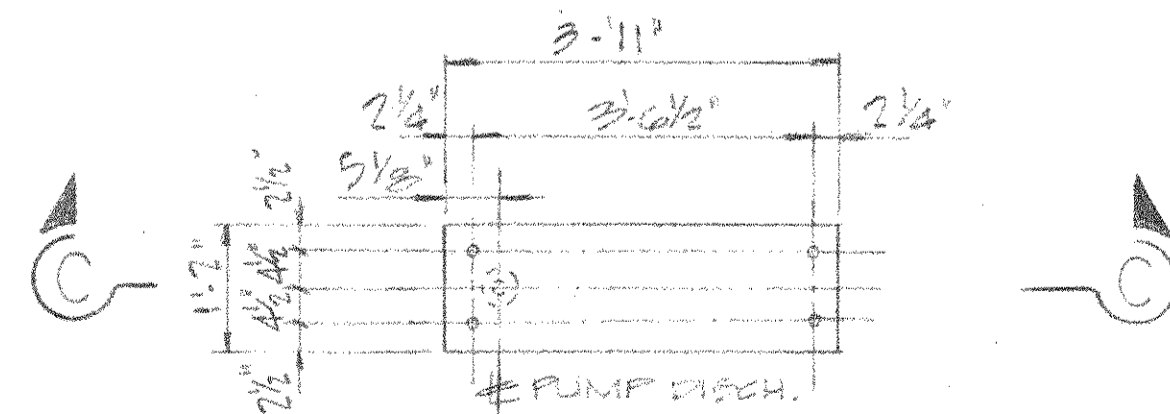
SECTION "A-A"



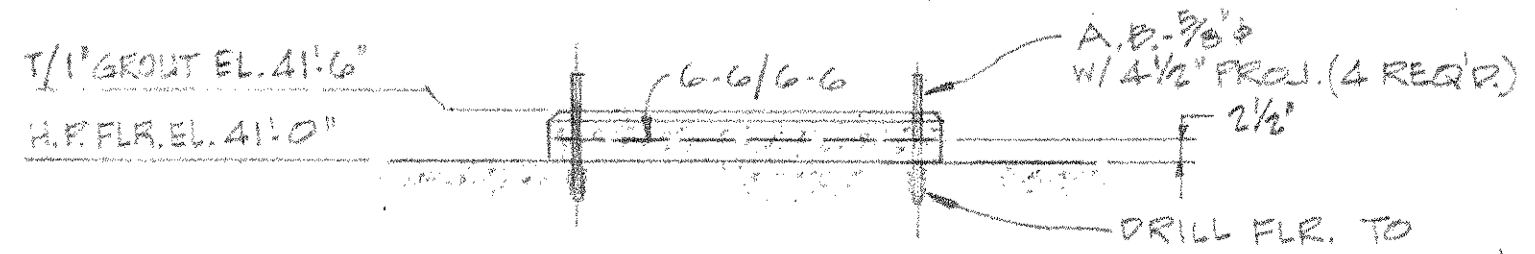
**W/H 1 & W/H 2
FOUNDATION**
SCALE: 1/2" = 1'-0"



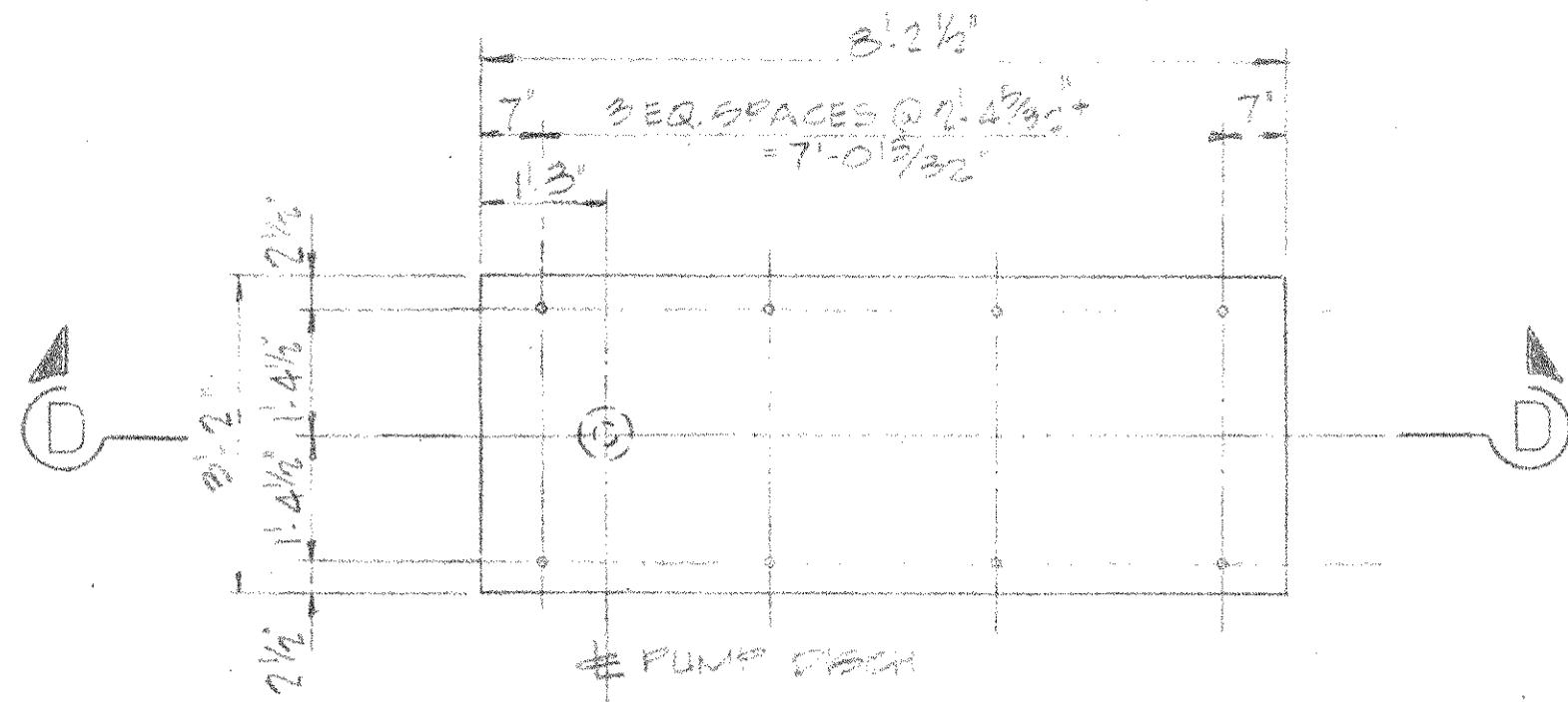
SECTION "B-B"



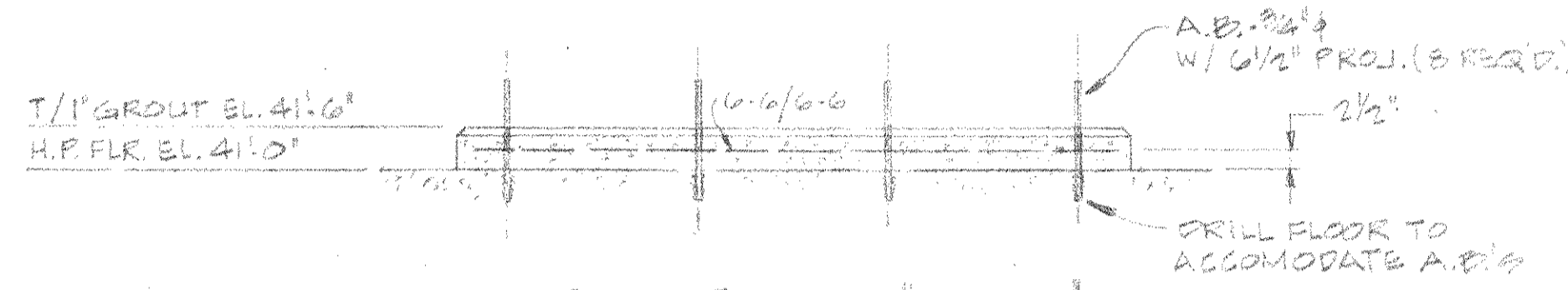
**CWWP-1, CWWP-2 & CWWP-3
FOUNDATION**
SCALE: 1/2" = 1'-0"



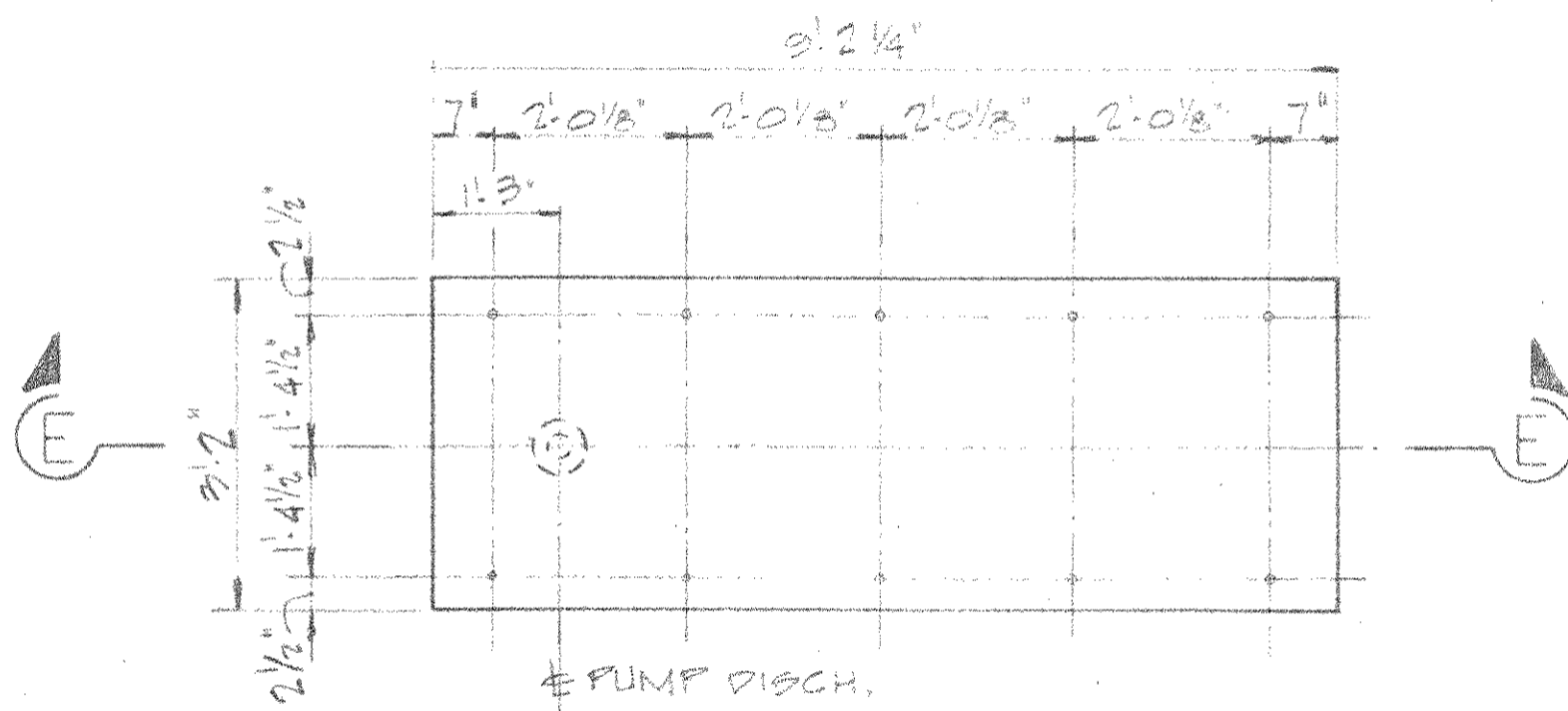
SECTION "C-C"



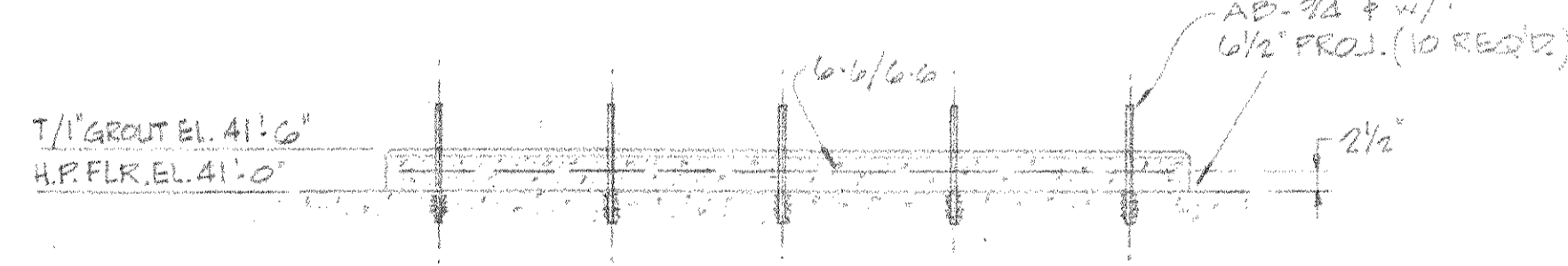
**BFP #1 & BFP #2
FOUNDATION**
SCALE: 1/2" = 1'-0"



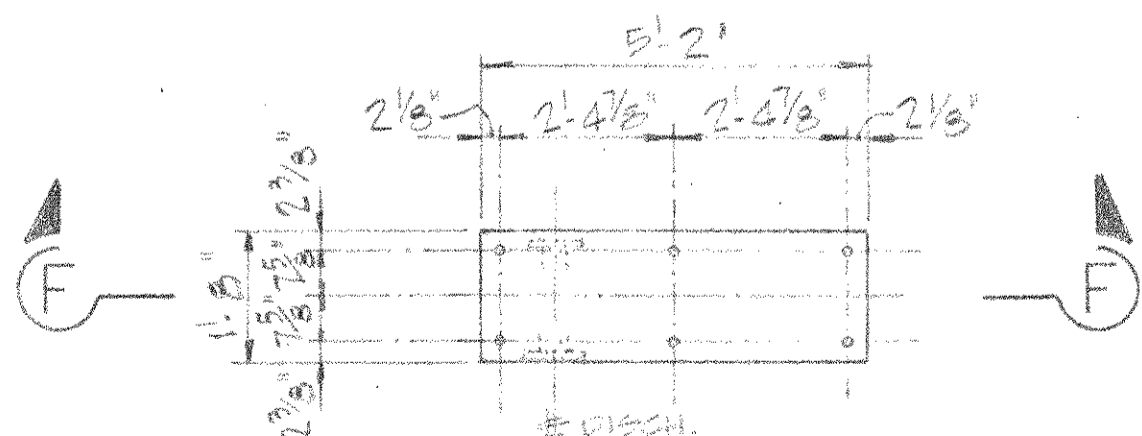
SECTION "D-D"



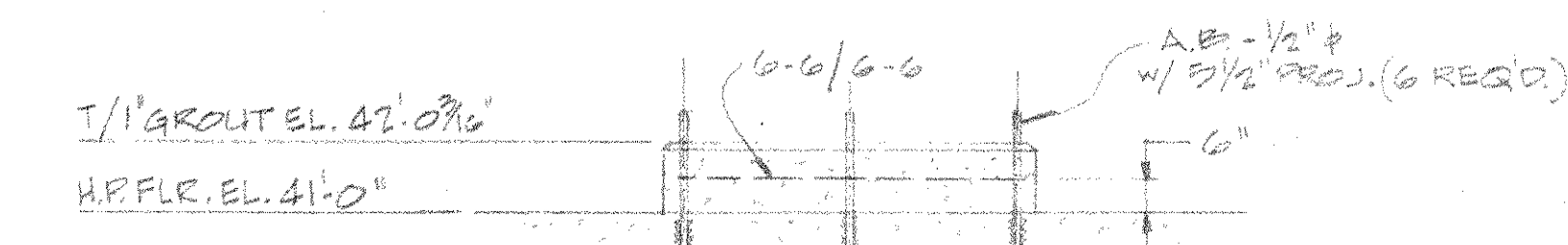
**BFP #3
FOUNDATION**
SCALE: 1/2" = 1'-0"



SECTION "E-E"



**WSP-1
FOUNDATION**
SCALE: 1/2" = 1'-0"



SECTION "F-F"

NOTE:
1. ROUGH UP EXIST' F.L. BEFORE POURING PUMP PADS. REFINISH EXIST' F.L. AFTER PUMP PADS ARE SET.

NOTE NO. 1 (TYPE)

TOLERANCES:
NORMAL ±
EXCEPT AS NOTED.

HOLE LOCATION
DIMENSIONS MUST
BE HELD TO ±

TOLERANCES MUST
NOT BE ACCUMULATIVE.

PROJ. NAME	PROJ. NO.	GRP.	B/M	D/L	NEXT HIGHER ASSY

THIS DRAWING IS THE PROPERTY OF CONSUMAT SYSTEMS, INC. AND IS TO BE USED ONLY FOR PRODUCING ITEMS OR SPECIFICS FOR CONSUMAT SYSTEMS, INC. SUBJECT TO RETURN UPON DEMAND AND IS NOT TO BE REPRODUCED, COPIED, REPRODUCED, LOANED OR USED IN ANY WAY WITHOUT WRITTEN PERMISSION OF CONSUMAT SYSTEMS, INC.

DR J.C. BRINK	 Consumat Systems, Inc. RICHMOND, VIRGINIA U.S.A.
DATE 3.4.87	
CHK J.M.P.	TITLE MISCELLANEOUS EQUIPMENT POINTS AND SERVICE PAN AREA
DATE 7/18/87	LOCATION HARRARD CO. RESOURCE RECOVERY FACILITY HARRARD CO. WISCONSIN
APP	SCALE 1/2" = 1'-0"
APP	SIZE D
APP	QNS NO. 7184-0000-3001 002
APP	REV 0

REV	REVISION	DATE	DR	CHK	APP	APP

DO NOT SCALE REFERENCE SHEET OF