

4

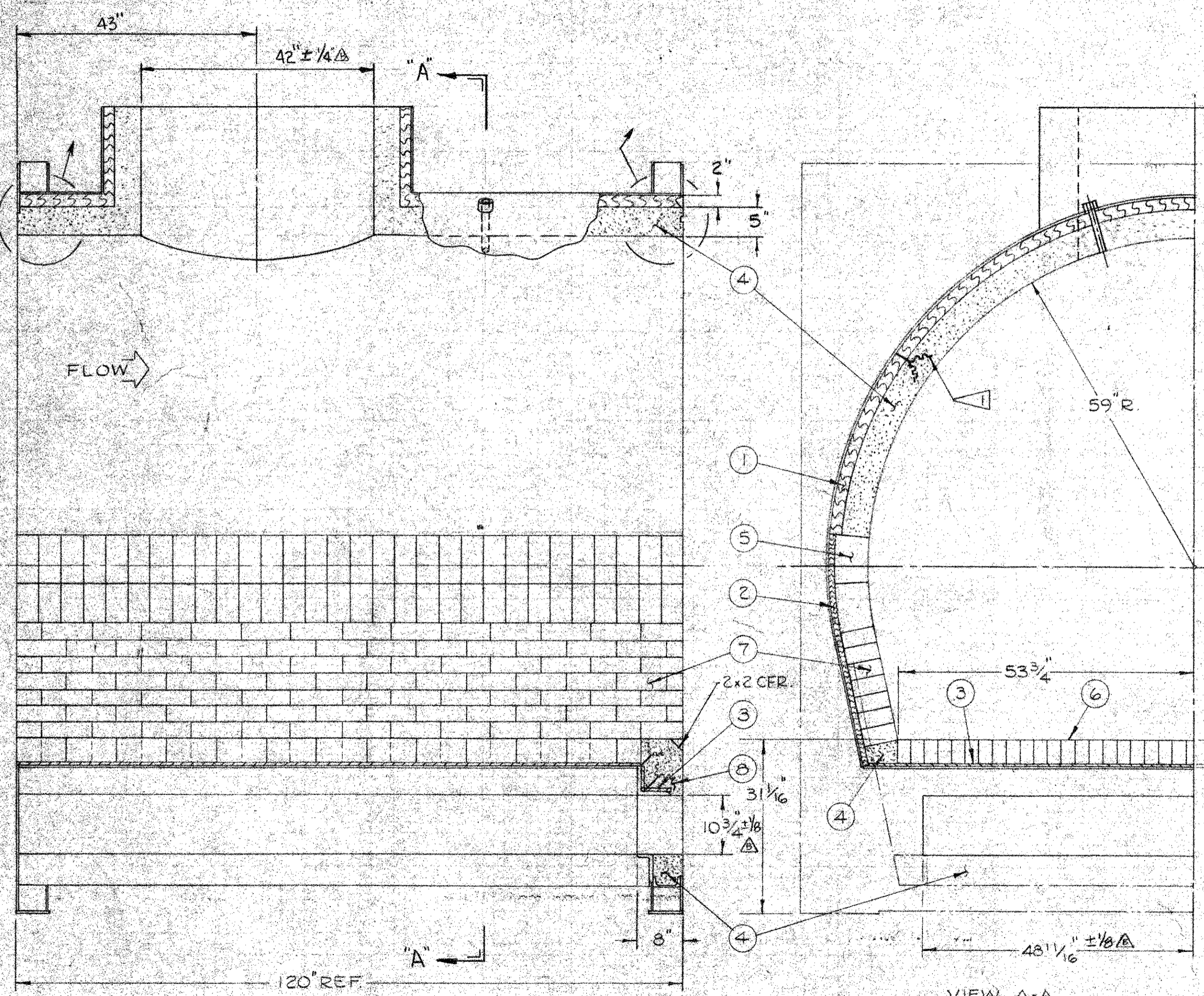
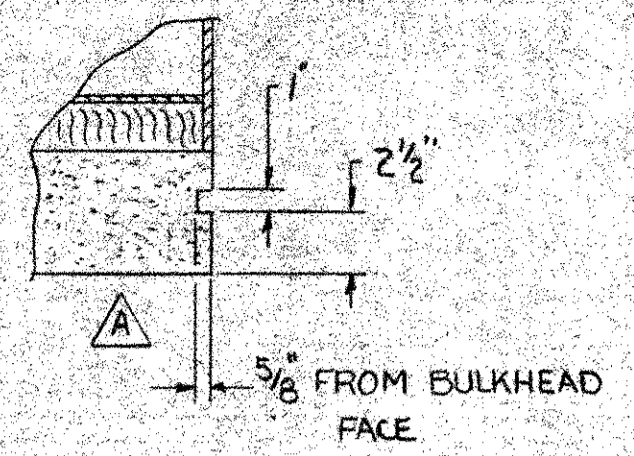
3

2

1

GROUP			PARTS LIST	
02	01	ITEM	PART	DESCRIPTION
	167	1		2" MONOBLOCK INSULATION
	72	2		1" MONOBLOCK INSULATION
	175	3		1/4" DURO BOARD INSULATION
	84	4		PLI-CAST STL. MIX REFRACTORY
	120	5		ROTARY KILN BLOCK 108-120
	538	6		STRAIGHT BRICK 2 1/2 x 4 1/2 x 9
	203	7		STRAIGHT BRICK 3 x 6 x 9
	7	8		PLIBRICO 27-C REFRACTORY
	2	9		DEMON AIR-SET CEMENT (100 LBS)
	1/2	10		C-E REFR. BLOCK STICK (100 LBS)
REF.	11	C-05-0250-G04		LOWER CHAMBER MOLD
REF.	12	C-05-0254-G02		RAM FACE MOLD
REF.	13	B-05-0255-G01		BREACHING MOLD

(MAX.) REFRACTORY FROM FACE OF BULKHEAD +0 (BOTH ENDS) -1/16



NOTES:  
 1. FOR REFRACTORY ANCHOR LAYOUT, SEE DRAWING No. D-15-0190.  
 2. "A. P. GREEN" MC-22 REFRACTORY MAY BE SUBSTITUTED FOR ITEM 8.

TOLERANCES:  
 NORMAL ± 1/8" \* EXCEPT AS NOTED, TOLERANCES APPLY PARTICULARLY TO OVER-ALL DIMENSIONS AND MUST NOT BE ACCUMULATIVE. HOLE LOCATION DIMENSIONS MUST BE HELD TO ± 1/32"

THIS DRAWING IS THE PROPERTY OF CONSUMAT SYSTEMS INC. AND IS TO BE USED ONLY FOR PRODUCING ITEMS ON ORDER FOR CONSUMAT SYSTEMS INC. SUBJECT TO RETURN UPON DEMAND AND IS NOT TO BE PRINTED, PHOTOGRAPHED, COPIED, REPRODUCED, LOANED OR USED IN ANY WAY WITHOUT WRITTEN PERMISSION OF CONSUMAT SYSTEMS INC.

B	ADD QA TOLERANCES	9-19-86	DMH	SCALE 3/4" = 1'-0"	DRAWN EAS4	DRAWING NO.
A	ADDED DETAIL SHOWING GROOVE & REFRACT. TOL.	8-6-86	RHH	DATE 11-7-83	CHK.	C-15D-0051
NO.	REVISION	DATE	BY	DO NOT SCALE	APPR.	SHEET OF

01	2515	8427	D-15-0190
GROUP	B/M	D/L	NEXT HIGHER ASSY

No. 2 SHELL REFRACTORY LINING (90 TON)

**Consumat Systems, Inc.**  
 RICHMOND, VIRGINIA U.S.A.

4

3

2

1