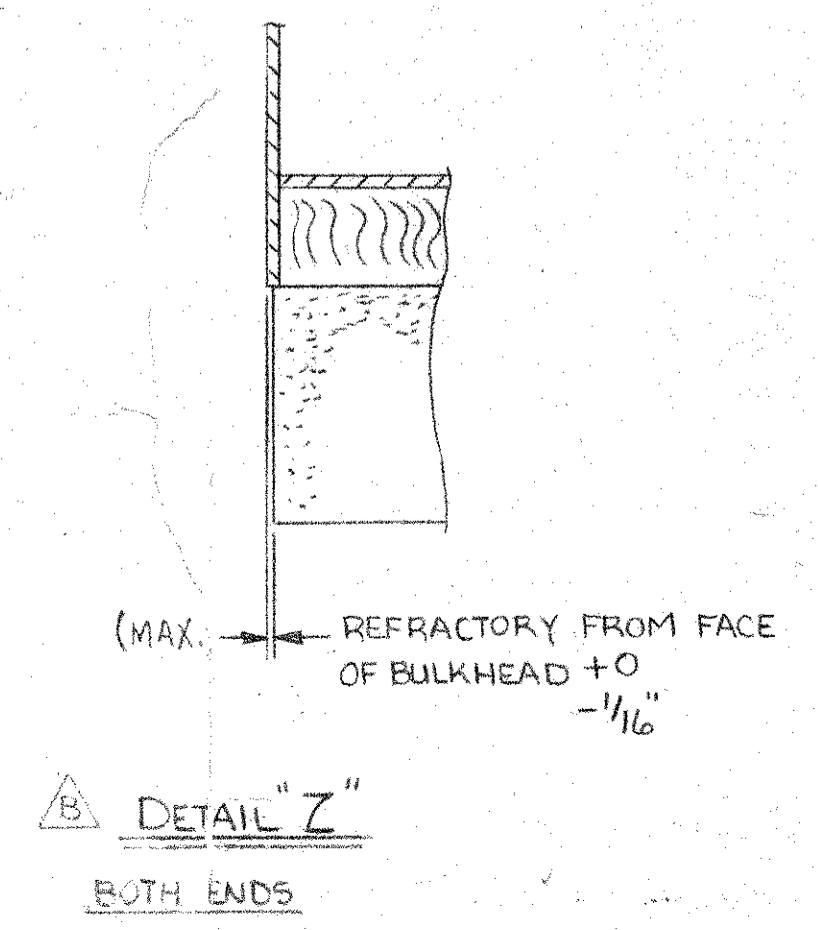
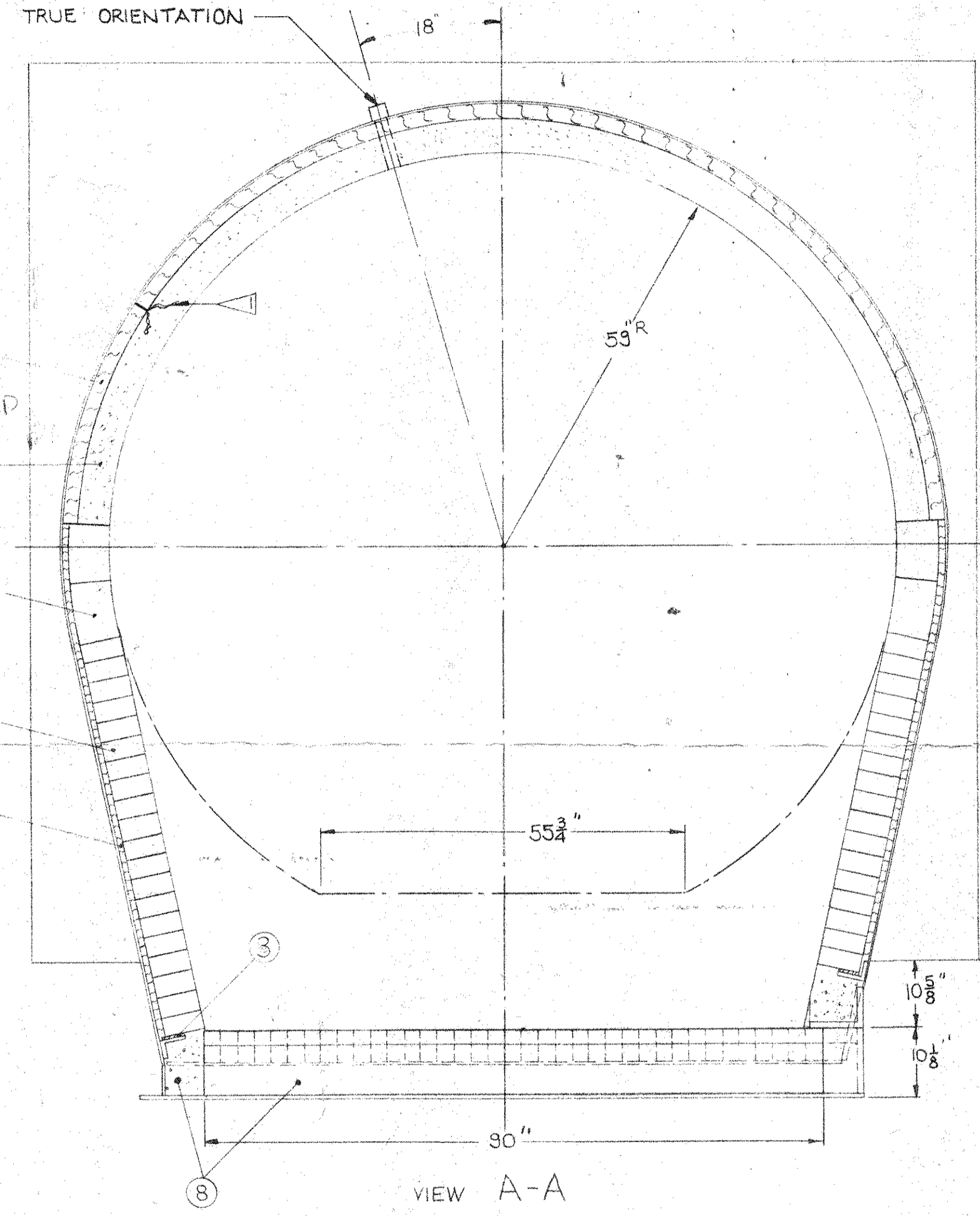
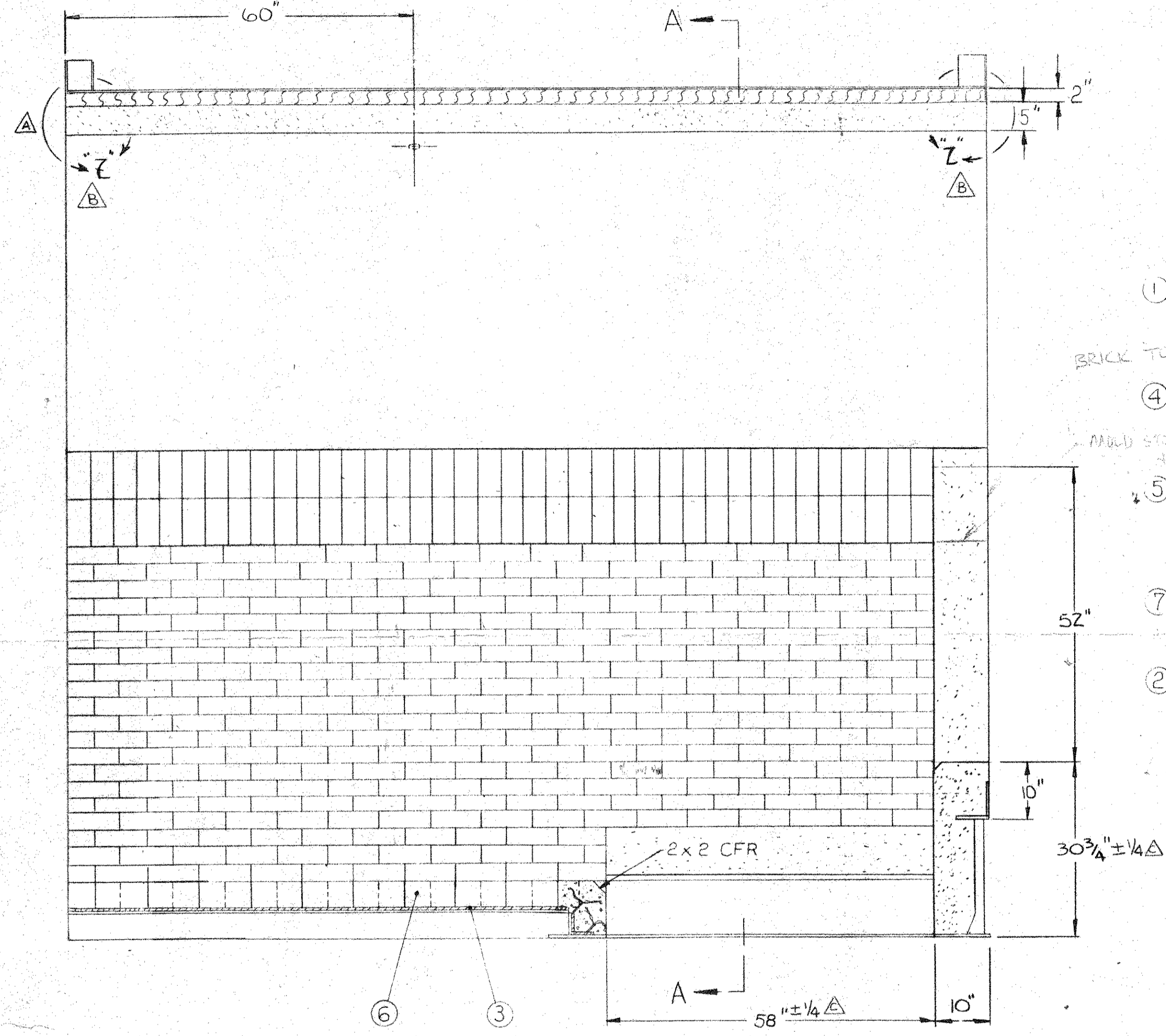


GROUP		PARTS LIST		DESCRIPTION
Q2	Q1	ITEM	PART	
	250	1		2 MONOBLOCK INSULATION
	470	2		1 MONOBLOCK INSULATION
	125	3		1 DURAECARD INSULATION
	140	4		1 PLICAST STEEL MIX REFRACTOR
	152	5		1 ROTARY KILN BLOCK 108-120
	360	6		1 STRAIGHT BRICK 2 1/4 x 4 1/2 x 9
	660	7		1 STRAIGHT BRICK 3 x 6 x 9
	17	8		1 PLIBRICO 27-C REFRACTOR
	REF 9	C-03-0250 602		1 LOWER CHAMBER MOLD
	REF 10	B-05-0281 601		1 LC REAR SECTION MOLD
	4	11		1 DEMON AIR-SET CEMENT 100LB
	1	12		1 C-E REFR. BLOCK STICK 100LB

NOTES
 △ FOR REFRACTORY ANCHOR LAYOUT, SEE DRAWING N° D-15-0153
 ▽ 'A.P. GREEN' MC-22 REFRACTOR MAY BE SUBSTITUTED FOR ITEM 8.



TOLERANCES:
 NORMAL ± 1/8" * EXCEPT AS NOTED, TOLERANCES APPLY PARTICULARLY TO OVER-ALL DIMENSIONS AND MUST NOT BE ACCUMULATIVE. HOLE LOCATION DIMENSIONS MUST BE HELD TO ± 1/32"
 THIS DRAWING IS THE PROPERTY OF CONSUMAT SYSTEMS INC., AND IS TO BE USED ONLY FOR PRODUCING ITEMS ON ORDER FOR CONSUMAT SYSTEMS INC. SUBJECT TO RETURN UPON DEMAND AND IS NOT TO BE PRINTED, PHOTOGRAPHED, COPIED, REPRODUCED, LOANED OR USED IN ANY WAY WITHOUT WRITTEN PERMISSION OF CONSUMAT SYSTEMS INC.

NO.	REVISION	DATE	BY	DO NOT SCALE	APPR	CHK	DRAWN	SCALE 3/4" = 1" D	DRAWING NO. D-15D-0059
-----	----------	------	----	--------------	------	-----	-------	-------------------	------------------------

01	2826	2648	D15 0215
CSI PROCESS SPEC NUMBER	GROUP	B/M	D/L NEXT HIGHER ASSY
# 4 SHELL - REFRACTORY LINING			
CS-3000E			

Consumat Systems, Inc.
 RICHMOND, VIRGINIA U.S.A.