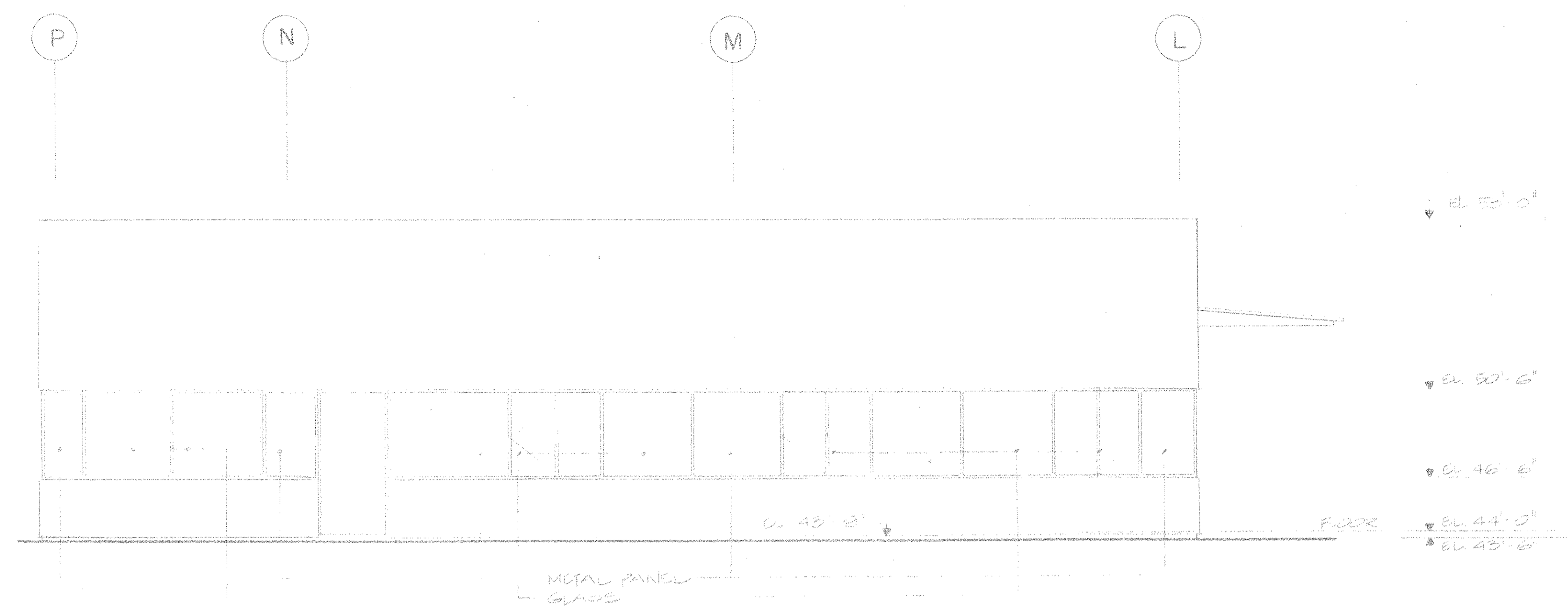
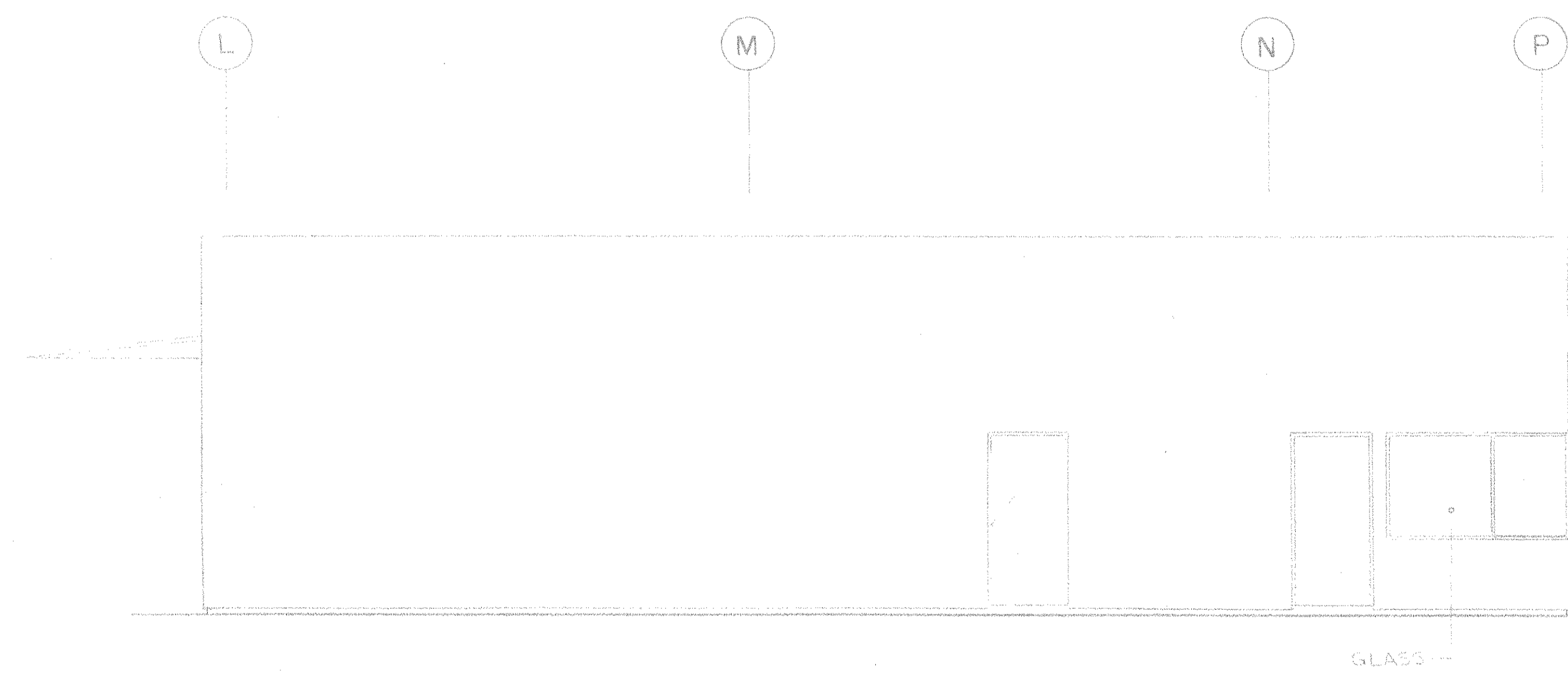


ELEVATION E

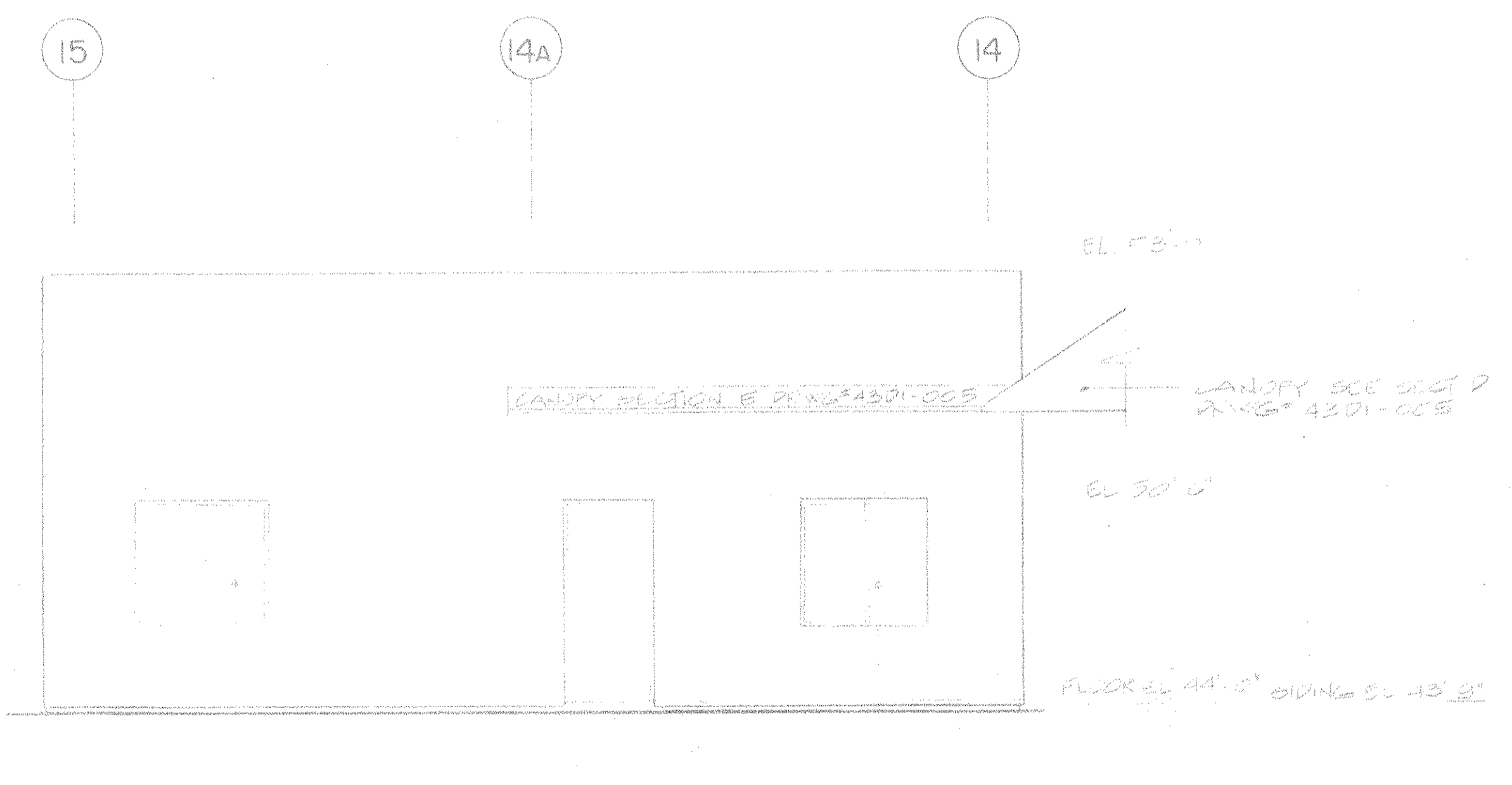


ELEVATION F

NOTES: 1. ALL DIMENSIONS ARE TO FACE UNLESS OTHERWISE SPECIFIED.
2. REFER TO SECTION E AND SECTION F FOR DETAILS.



ELEVATION H



ELEVATION G

NO.	REVISION	DATE	BY
2	ORIGINAL TRANSFERRED TO C.S.I.	NOV 19/81	J.L.
1	GENERAL REVISION ISSUED FOR CONSTRUCTION	3/1/82	J.S.
0	ISSUED FOR REVIEW	1/1/82	J.S.
0	ISSUED FOR REVIEW	1/1/82	J.S.
0	ISSUED FOR REVIEW	1/1/82	J.S.

TEMPORARY PERMIT NO. 771
TO PRACTICE ENGINEERING IN
THE STATE OF MARYLAND

W.P. LONDON AND ASSOCIATES LIMITED
CONSULTING ENGINEERS
NIAGARA FALLS

HARFORD COUNTY RESOURCE RECOVERY FACILITY - HARFORD COUNTY, MARYLAND

ARCHITECTURAL
OFFICES - ELEVATIONS (E) (F) (G) (H)

Consumat Systems, Inc.
RICHMOND, VIRGINIA U.S.A.

SCALE 1/4" = 1'-0"	DRAWN D.G.	DRAWING NO.
DATE AUG 29	CHK	7624-0000-44DI-012
DO NOT SCALE	APPR	SHEET OF