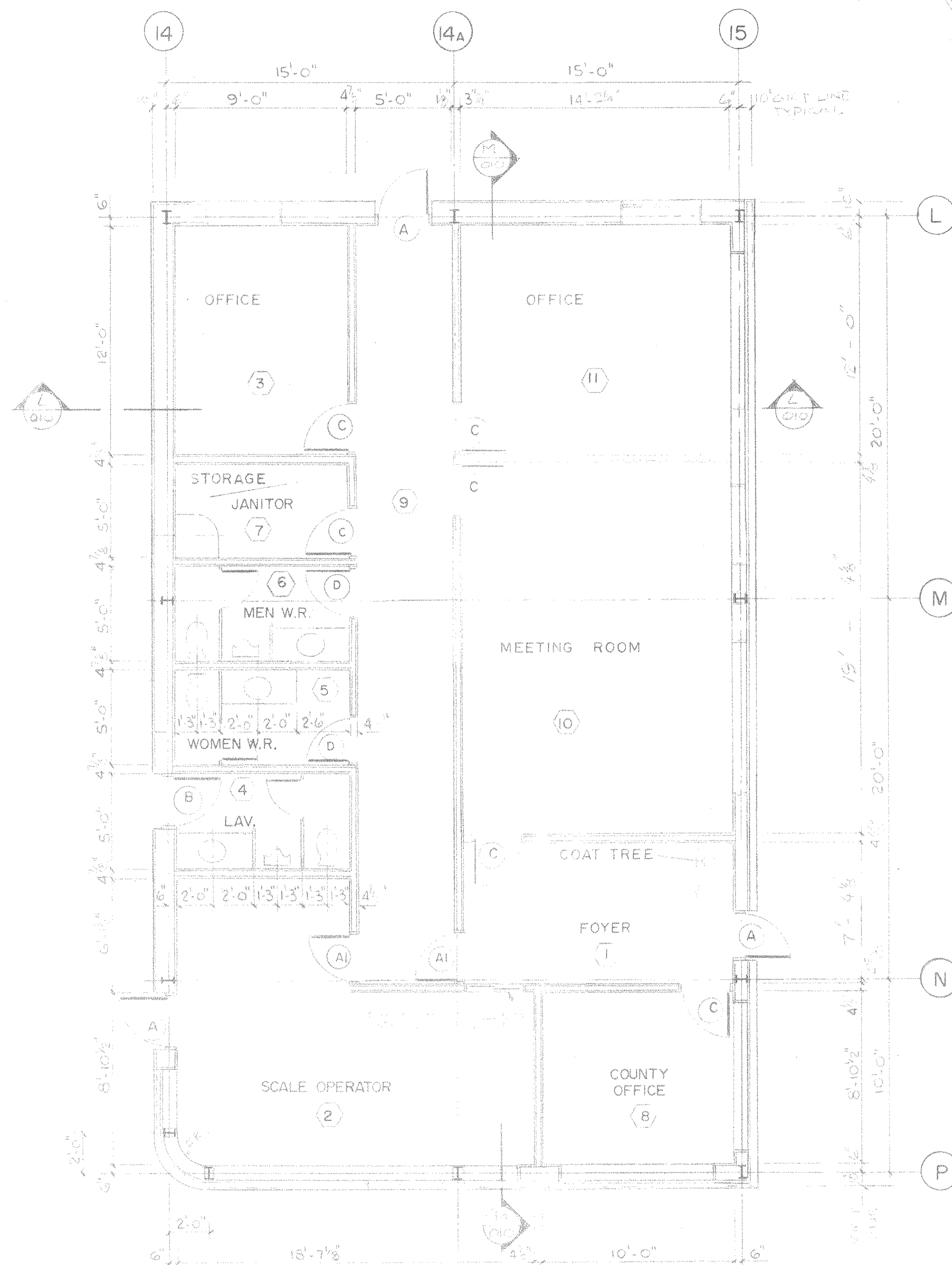


REFLECTED CEILING PLAN

NOTE:  
FOR INFORMATION ON INSTALLATION  
AND TYPE OF CEILING SEE GENERAL  
CONSTRUCTION CONTRACT SECTION 0510



OFFICE - FLOOR PLAN

INTERIOR WALL CONSTRUCTION  
7 1/2" GYPSUM WALLBOARD OVER  
STYRENE FOAM INSULATION  
LEAD LINING WHEN OVER EXPOSED SCHEDULE  
40

NO.	REVISION	DATE	BY
2	ORIGINAL TRANSFERRED TO C.S.I.	NOV 1986	KL
1	OFFICE FLOOR PLAN REVISIONS ISSUED FOR CONSTRUCTION.	31 10 86	KL
0	BY CLADDING & ROOFING		KL
0	ISSUED FOR CONSTRUCTION		KL

TEMPORARY PERMIT NO. 771  
TO PRACTICE ENGINEERING IN  
THE STATE OF MARYLAND

**W.P. LONDON AND ASSOCIATES LIMITED**  
CONSULTING ENGINEERS  
NIAGARA FALLS

HARFORD COUNTY RESOURCE RECOVERY FACILITY - HARFORD COUNTY, MARYLAND

ARCHITECTURAL  
**OFFICE - FLOOR PLAN AND REFLECTED CEILING PLAN**

**Consumat Systems, Inc.**  
RICHMOND, VIRGINIA U.S.A.

SCALE 1/4" = 1'-0"	DRAWN D.G.	DRAWING NO.
DATE AUG. 1 1986	CHK. [Signature]	7624-0000-4401-009
DO NOT SCALE	APPR.	SHEET OF

REV. 2