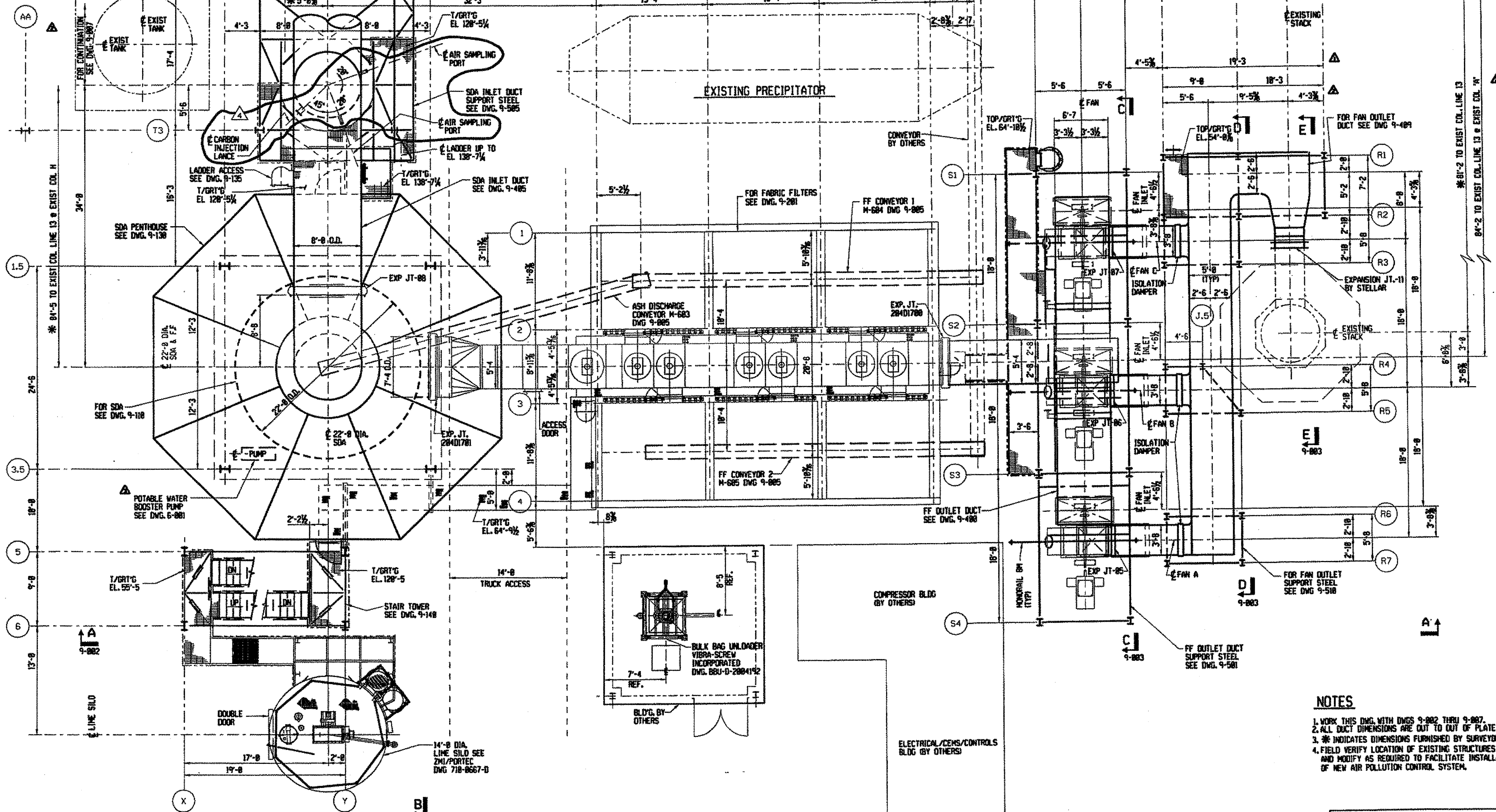


100-6-868E



**NOTES**

1. WORK THIS DWG. WITH DWGS 9-002 THRU 9-007.
2. ALL DUCT DIMENSIONS ARE OUT TO OUT OF PLATE UNL.
3. \* INDICATES DIMENSIONS FURNISHED BY SURVEYOR.
4. FIELD VERIFY LOCATION OF EXISTING STRUCTURES AND MODIFY AS REQUIRED TO FACILITATE INSTALLATION OF NEW AIR POLLUTION CONTROL SYSTEM.

**PLAN VIEW**

This print and all information thereon is the property of Wheelabrator A.P.C. It is confidential and proprietary and must not be used, made public, or copied unless authorized in writing by Wheelabrator A.P.C. It is transmitted to you with the explicit understanding that it is subject to return upon request.

NOTE: FABRICATION, MANUFACTURING, OR DETAILING MAY PROCEED ONLY WHEN DRAWING IS ISSUED OR AUTHORIZED FOR SUCH PURPOSES.

\* 3 8 9 8 9 0 0 1 \*

NO.	REVISION	DATE	NO.	REVISION	DATE
0	DRAWING CHECKED	1-12-85			
1	REVISED DIMENSIONS	2-24-85			
2	CHGD SDA INLET DUCT SUPPORT STEEL	3-22-85			
3	ADDED POTABLE WATER BOOSTER PUMP	5-17-85			
4	ADD PORT. LANCE ORIENTATION TO PLAN	7-11-85			

REV.	DATE	TO	FOR	REV.	DATE	TO	FOR
0	1-12-85	SOUTHEASTERN	REFERENCE	4	07-12-85	STELLAR	CONSTRUCTION
0	1-13-85	BSM	REFERENCE				
1	2-24-85	STELLAR	CONSTRUCTION				
2	3-28-85	STELLAR	CONSTRUCTION				
3	5-27-85	STELLAR	CONSTRUCTION				

DWG. BY: KRESIAK	DATE: 04-22-84	<b>STELLAR/HARFORD WTE FACILITY RETROFIT</b> <b>JOPPA, MD</b> <b>GENERAL ARRANGEMENT</b> <b>PLAN VIEW</b>	
CHKD. BY: PCB	DATE: 1-10-85		
APPROV. BY: HNS	DATE: 2-24-85		
SCALE: 3/8"=1'-0"			
CERTIFIED BY:	DATE:	<b>3898-9-001</b>	REV. NO. <b>4</b>