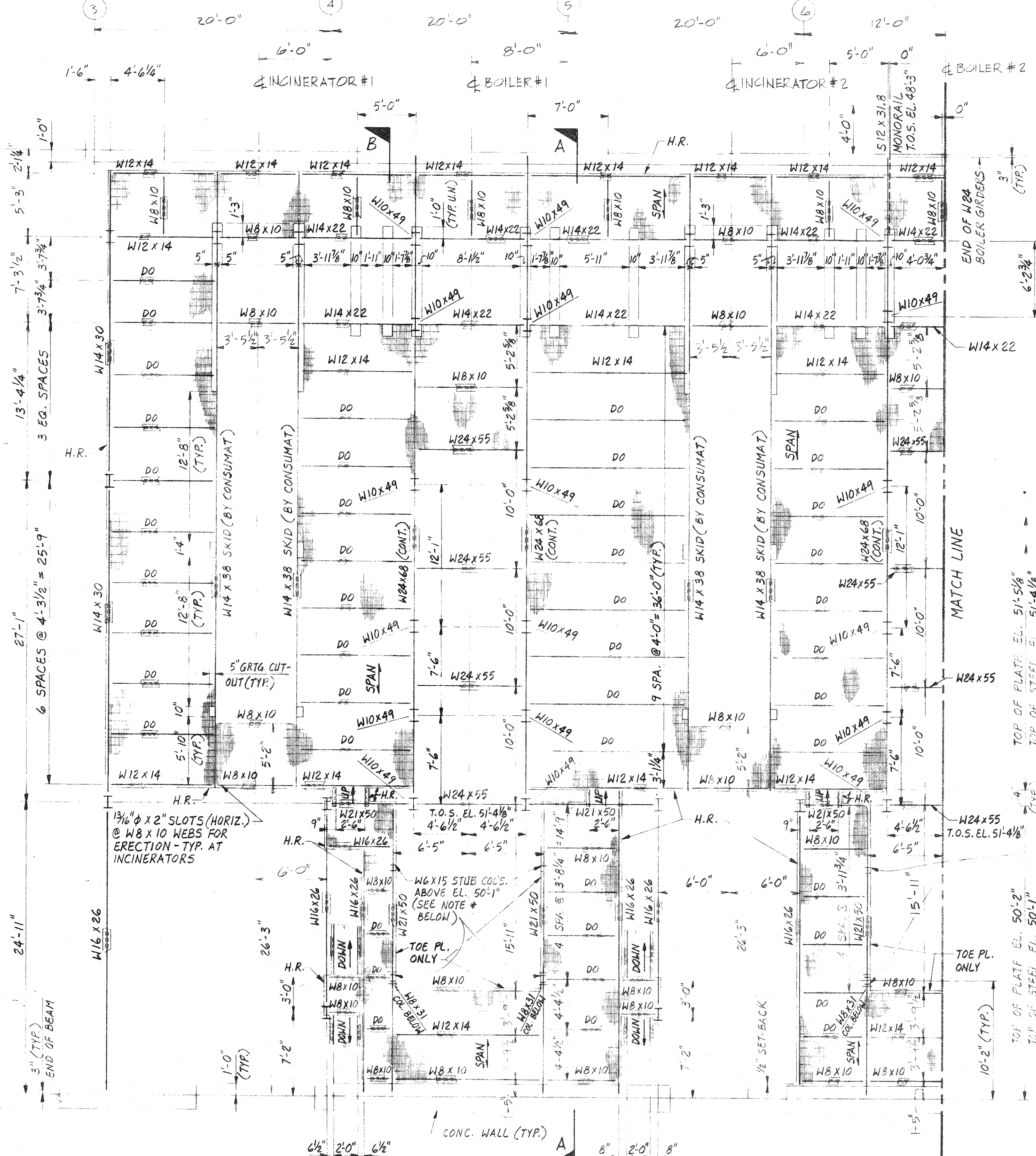


GROUP			PARTS LIST		
02	01	ITEM	PART	DESCRIPTION	



- NOTES:**
- ALL STEEL TO BE FLUSH AT TOP, UNLESS NOTED.
  - PLATFORM TO BE BOLTED CONSTRUCTION USING 3/4" A-325 HARDWARE.
  - VENDOR TO SUPPLY COMPLETE BOLT LIST.
  - ALL CONNECTIONS PER STEEL CONSTRUCTION MANUAL BY "AMERICAN INSTITUTE OF STEEL CONSTRUCTION."
  - ALL COLUMNS TO HAVE APPROXIMATELY 1" GROUT UNDER BASE PLATE, UNLESS NOTED.
  - STAIRS TO BE PER "O.S.H.A." REQUIREMENTS AND SHIPPED COMPLETE WITH HANDRAILS STRAPPED TO THE STAIR. (NOT WELDED)
  - ALL STEEL TO BE CLEARLY MARKED USING "BLEED-THRU" PAINT OR WEATHERPROOF MARKING.
  - INCINERATOR SKID BEAMS ARE PROVIDED BY CONSUMAT SYSTEMS INC. AND ARE NOT REQUIRED AS PART OF STRUCTURAL PACKAGE. BOLT HOLES FOR THESE BEAMS TO BE DRILLED IN FIELD TO MATCH OTHER STRUCTURAL COMPONENTS.
  - ALL STEEL TO BE PAINTED WITH ONE FINISH COAT OF A GOOD GRADE MACHINERY GRAY PAINT.
  - GRATING PANELS TO BE TACK WELDED AT EACH POINT OF SUPPORT.
  - ALL HANDRAIL TO BE POSITIONED WITH TOE PLATE TO THE INSIDE.
  - GRATING TO BE NOTCHED IN FIELD TO CLEAR HANDRAIL POSTS WHICH WELD TO BEAMS AS SHOWN IN DETAIL, SHEET 5.
  - ALL HANDRAIL TO BE OF WELDED CONSTRUCTION.

**NOTE:**  
 ALL STAIR STRINGERS C10x15.3  
 ALL GRATING 1" x 3/16"  
 ALL COLUMNS W8x31 UNLESS NOTED.

W6x15 STUB COL'S.  
 ABOVE EL. 50'-1"  
 (SEE NOTE \* BELOW)

**\* NOTE:**  
 FIELD TO LOCATE & WELD STUB COLUMNS FOR ECONOMIZER. (COL'S. MUST CLEAR ACCESS MANWAYS ON ECONOMIZER.)

PLAN  
 MAIN PLATFORM LEVEL

HARFORD P-4805		CSI PROCESS SPEC NUMBER		GROUP	B/M	D/L	NEXT HIGHER ASSY
MAIN PLATFORM PLAN							
SHT. 1							
<b>Consumat Systems, Inc.</b> RICHMOND, VIRGINIA U.S.A.				SCALE 3/16" = 1'-0"		DRAWN R. DAVIS	
				DATE 9-25-86		CHK L. SUTTON	
NO.		REVISION		DATE		BY	
DO NOT SCALE		APPR		SHEET 1 OF 6		REV.	

THIS DRAWING IS THE PROPERTY OF CONSUMAT SYSTEMS INC. AND IS TO BE USED ONLY FOR PRODUCING ITEMS ON ORDER FOR CONSUMAT SYSTEMS INC. SUBJECT TO RETURN UPON DEMAND AND IS NOT TO BE REPRODUCED, COPIED, REPRODUCED, LOANED OR USED IN ANY MANNER WITHOUT WRITTEN PERMISSION OF CONSUMAT SYSTEMS INC.