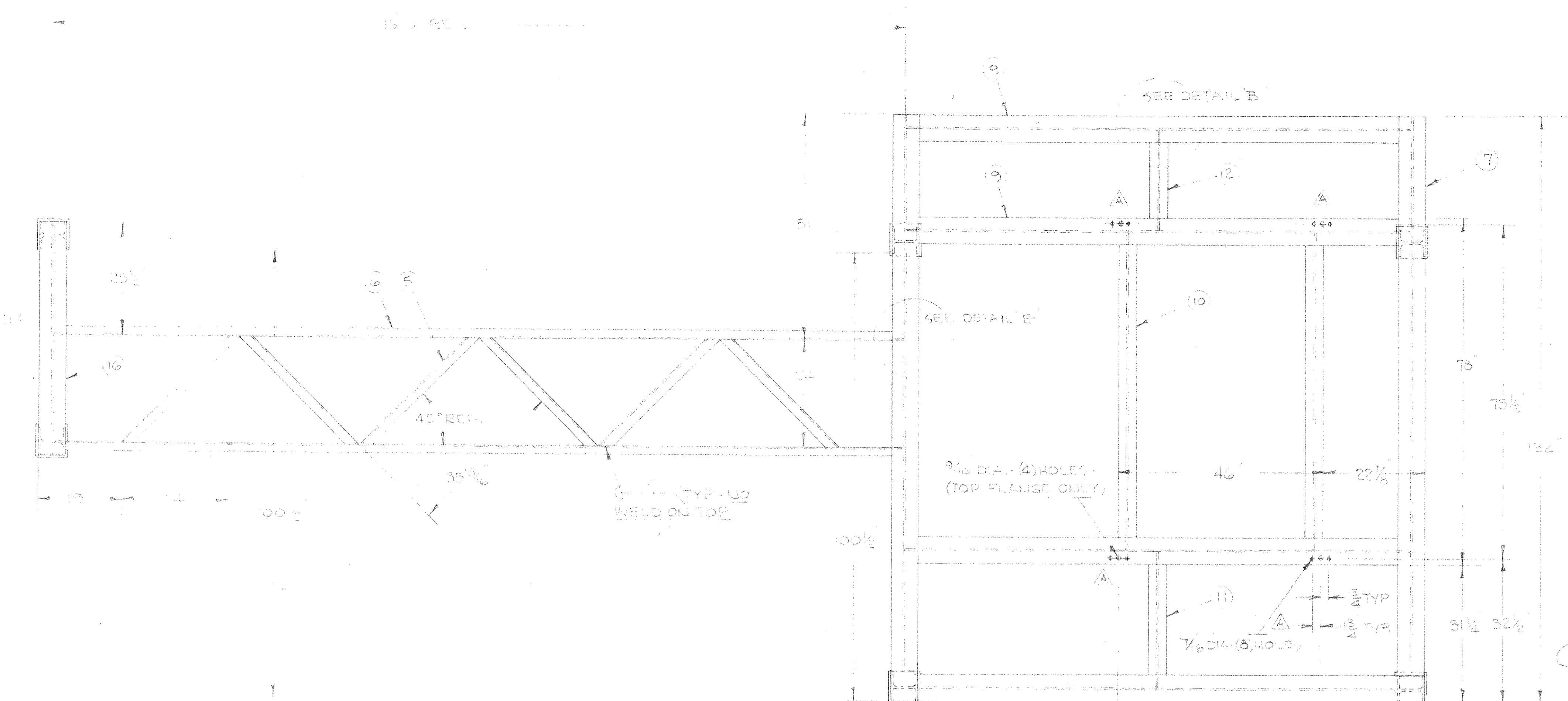
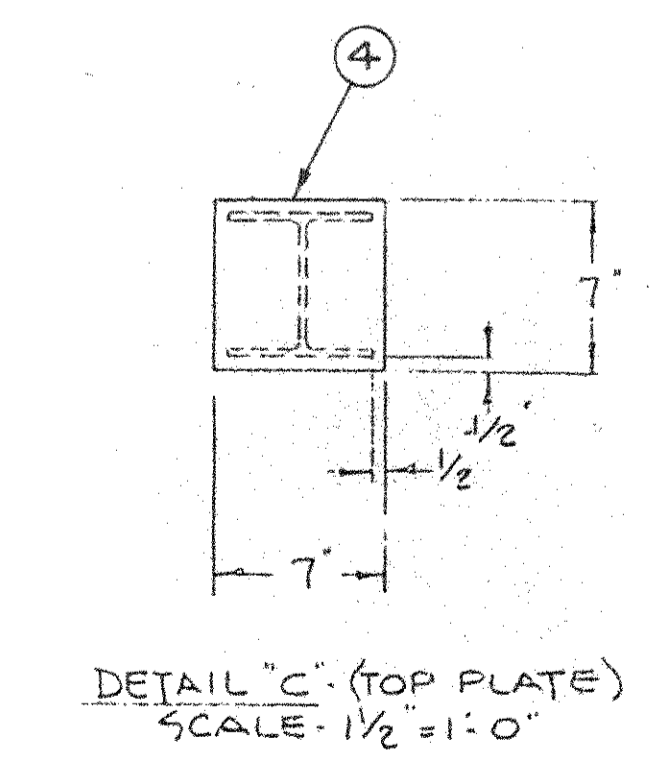
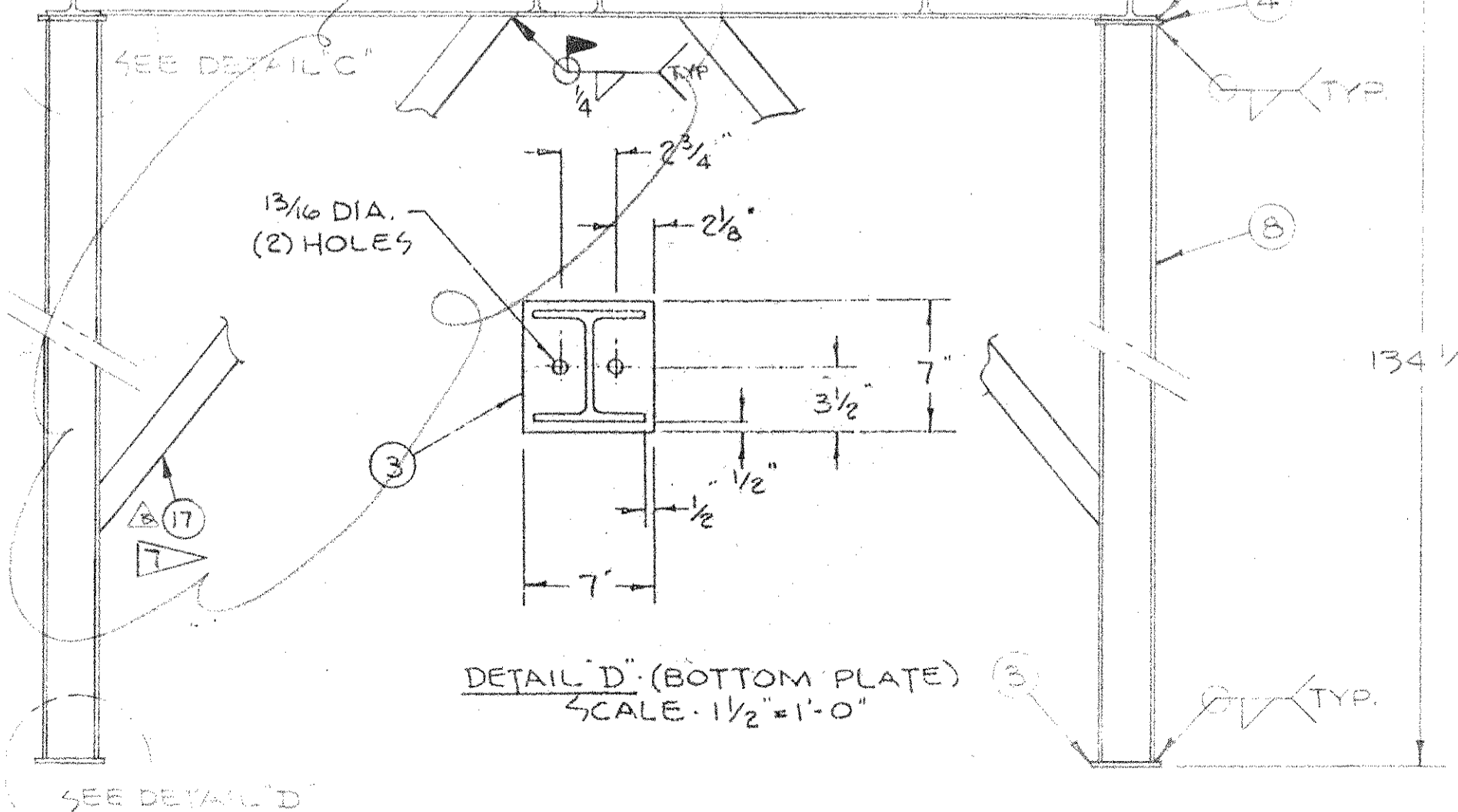
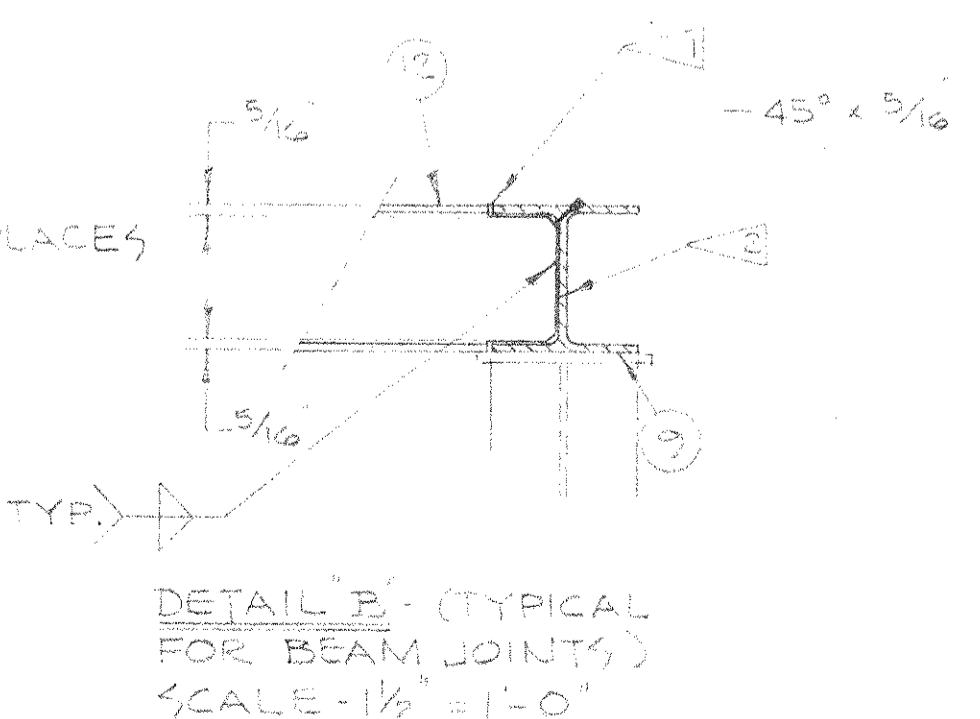
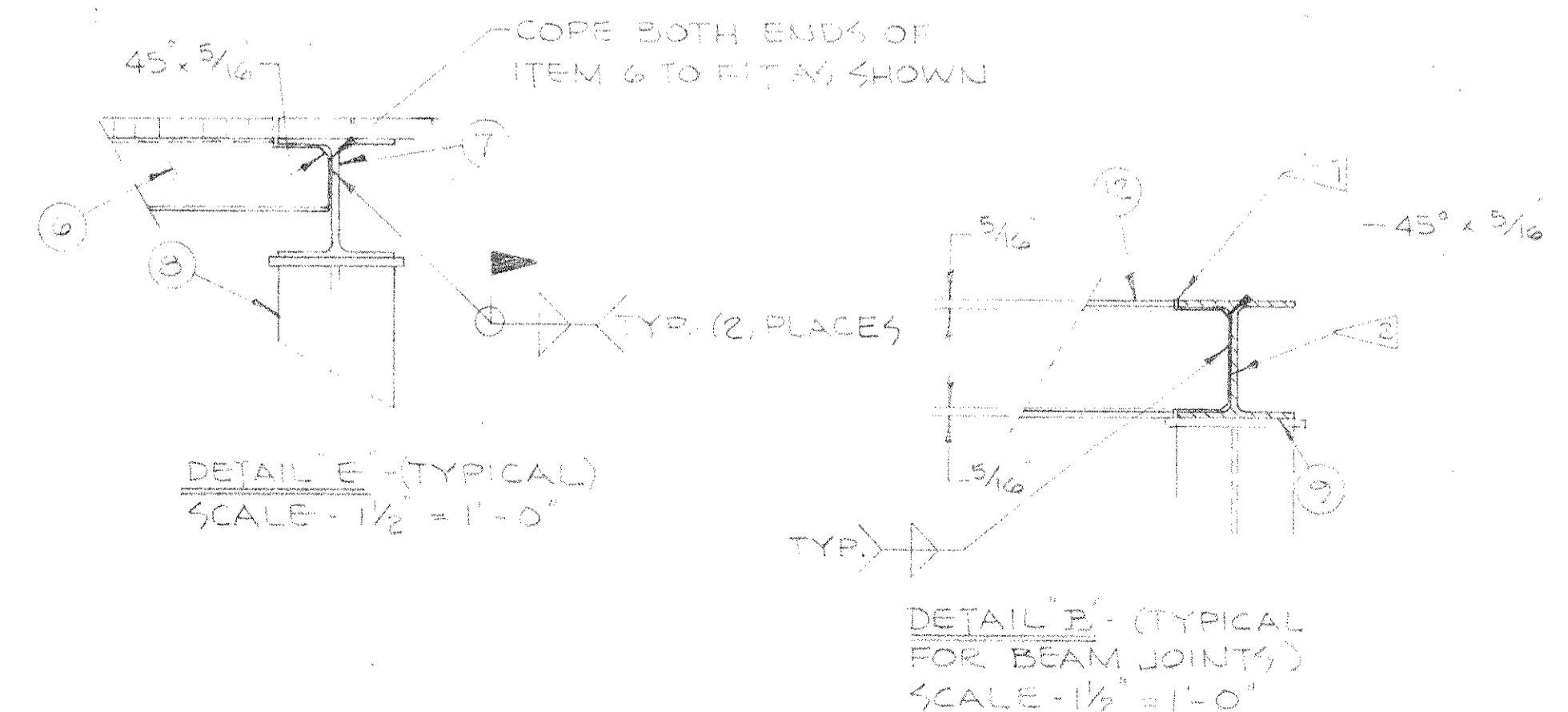
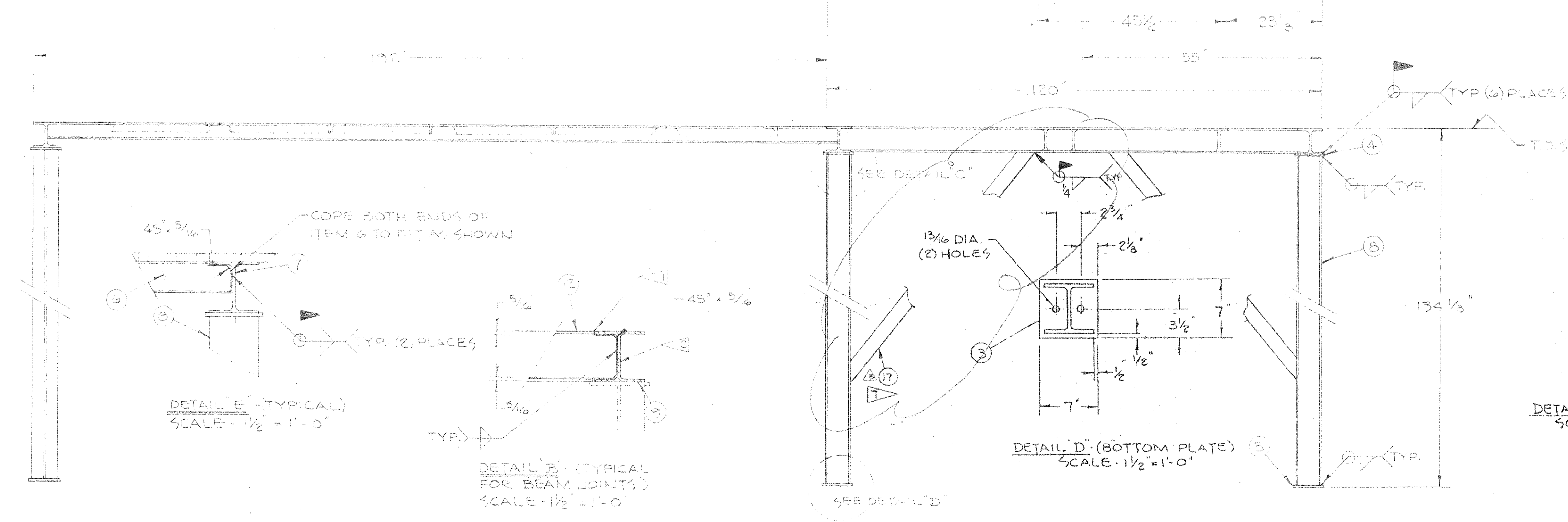


| GROUP |    | PARTS LIST  |      |   |
|-------|----|-------------|------|---|
| 02    | 01 | ITEM        | PART | DESCRIPTION   |
| 2     | 1  | C43-0352G01 |      | ACCESS LAUDER - PLATFORM                                |
| 1     | 2  | C44-0219G01 |      | HANDRAIL ASSY. U/C PLATFORM                             |
| 6     | 3  |             |      | 1/2 x 7 F.B. x 7  |
| 6     | 4  |             |      | 1/2 x 7 F.B. x 7  |
| 6     | 5  |             |      | 2 2 x 2 x 1/4 x 35 1/2                                  |
| 2     | 6  |             |      | C4 x 5.4" x 17 1/2                                      |
| 2     | 7  |             |      | W6 x 15.0" x 132  |
| 6     | 8  |             |      | W6 x 15.0" x 127 1/2                                    |
| 4     | 9  |             |      | W6 x 15.0" x 113 5/8                                    |
| 2     | 10 |             |      | W6 x 9.0" x 71 5/8                                      |
| 1     | 11 |             |      | W6 x 9.0" x 30 7/8                                      |
| 1     | 12 |             |      | W6 x 9.0" x 22 3/4                                      |
| 8     | 13 |             |      | 19-W 4 GRATING 1" x 3/16 BRG. BARS - 24 W. x 27 1/4 LG. |
| 3     | 14 |             |      | 19-W 4 GRATING 1" x 3/16 BRG. BARS - 36 W. x 120 LG.    |
| 1     | 15 |             |      | 19 W 4 GRATING 1" x 3/16 BRG. BARS - 24 W. x 120 LG.    |
| 1     | 16 |             |      | W6 x 15.0" x 52 1/2                                     |
| 8     | 17 |             |      | 4 3 x 3 x 1/4 x 66                                      |



- NOTES:
- ALL STEEL TO BE FLUSH AT TOP, UNLESS OTHERWISE NOTED
  - COPE ENDS OF BEAMS TO FIT AS SHOWN IN DETAIL "B"
  - GRATING SHOULD BE NOTCHED IN THE FIELD TO CLEAR HANDRAIL POSTS WHICH WELD TO BEAMS WITH TOE PLATES ON INSIDE AS SHOWN IN SECTION A-A
  - TACK WELD GRATING PANELS TO BEAMS AT ALL POINTS OF SUPPORT.
  - ALL HANDRAIL TO BE OF WELDED CONSTRUCTION.
  - ALL STEEL TO BE PAINTED (1) COAT GRAY RUST RESISTANT PAINT - RUSTOLEUM NO. 904 GRAY OR EQUIVALENT
  - ANGLE STIFFENERS TO BE CUT & COPE IN FIELD.



**Field Issued**  
 Date: JUN 10 1987  
**ISSUED FOR CONSTRUCTION**  
 AUTH. SIG. *KCS* DATE 6/10/87

FRAMING PLAN  
 SCALE - 3/4" = 1'-0"

THIS DRAWING IS THE PROPERTY OF CONSUMAT SYSTEMS, INC. AND IS TO BE USED ONLY FOR PRODUCING ITEMS ON ORDER FOR CONSUMAT SYSTEMS, INC. SUBJECT TO RETIRED DEMAND AND IS NOT TO BE PRINTED, PHOTOCOPIED, REPRODUCED, LOANED OR USED IN ANY WAY WITHOUT WRITTEN PERMISSION OF CONSUMAT SYSTEMS, INC.

| NO. | REVISION               | DATE    | BY  | APP. |
|-----|------------------------|---------|-----|------|
| B   | ADDED ITEM 17 & NOTE T | 6-8-87  | DMA |      |
| A   | ADD 3) 7/16 HOLES      | 3-23-87 | DM  |      |

| GROUP                   | B/M | D/L  | NEXT HIGHER ASSY |
|-------------------------|-----|------|------------------|
| HARFORD CO P-43005      | 01  | 4901 |                  |
| CSI PROCESS SPEC NUMBER |     |      |                  |

PLATFORM - U/C BLOWER  
 (W/BOILER ACCESS) CS-3000E

**Consumat Systems, Inc.**  
 RICHMOND, VIRGINIA U.S.A.

SCALE AS NOTED DRAWN EAS  
 DATE 2-24-87 CHK.  
 DO NOT SCALE APPR.

DRAWING NO. D-44-0215  
 SHEET 1 OF 2