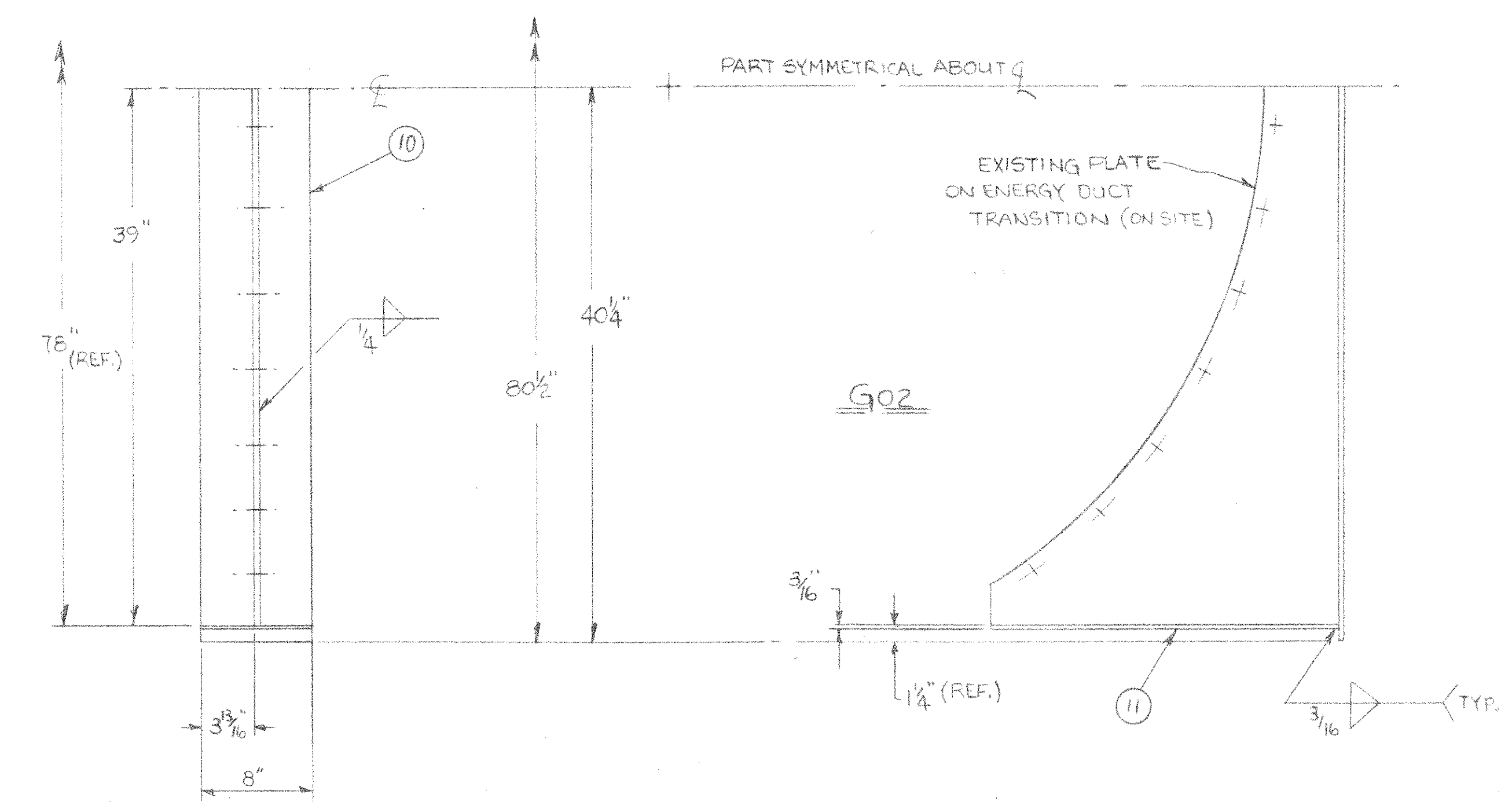
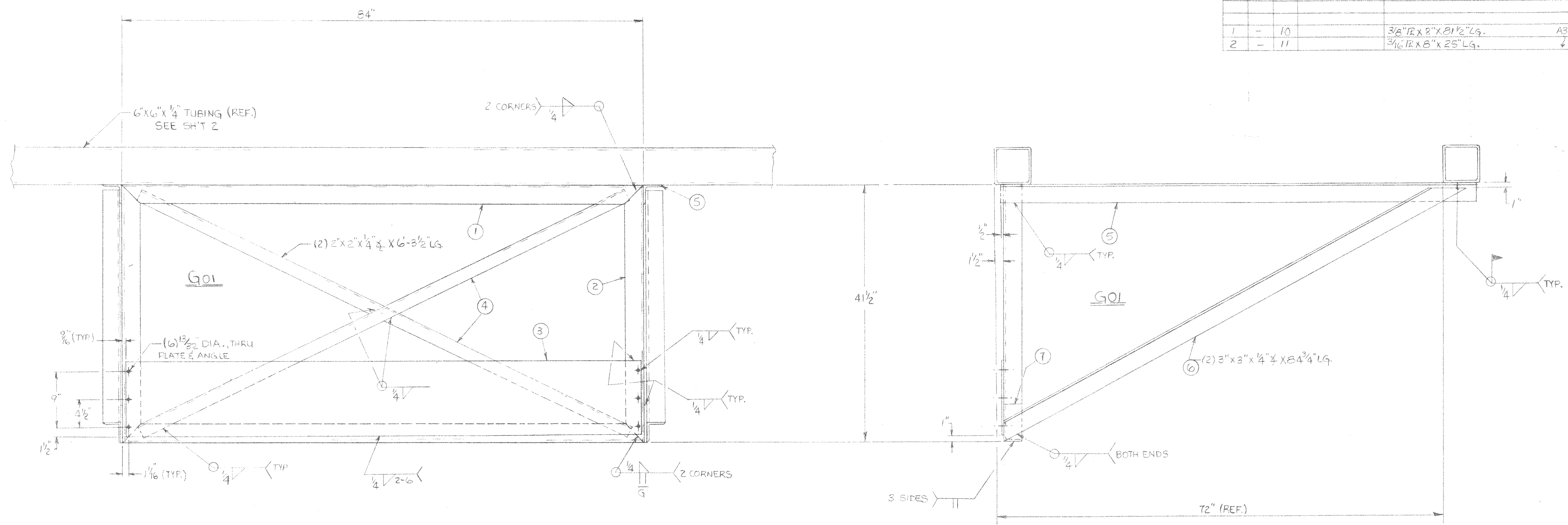


GROUP		PARTS LIST			
02	01	ITEM	PART	DESCRIPTION	
-	2	1		3"x3"x1/4"x84" LG.	A36
-	2	2		3"x3"x1/4"x41 1/2" LG.	
-	1	3		3/8" R x 12" x 82 1/8" LG.	
-	2	4		2"x2"x1/4"x75 1/2" LG.	
-	2	5		3"x3"x1/4"x76 1/2" LG.	
-	2	6		3"x3"x1/4"x84 3/4" LG.	(COPE)
-	2	7		1/4"x8" F.B. X 6" LG.	
1	-	10		3/8" R x 8" x 81 1/2" LG.	A36
2	-	11		3/16" R x 8" x 25" LG.	



Field Issued
 Date: JUN 10 1987
 AUTH. KCS DATE 6/19/87
 SIG. [Signature]

ISSUED FOR CONSTRUCTION

TOLERANCES:
 NORMAL + 1/32
 EXCEPT AS NOTED.
 HOLE LOCATION DIMENSIONS MUST BE HELD TO ± 1/16
 TOLERANCES MUST NOT BE ACCUMULATIVE.

HARFORD	P4805				
PROJ. NAME	PROJ. NO.	GRP.	B/M	D/L	NEXT HIGHER ASSY

DR RHH
 DATE 6-2-87
 CHK
 DATE
 APP
 APP

Consumat Systems, Inc.
 RICHMOND, VIRGINIA U.S.A.
 TITLE: TRANSITION SUPPORT
 ENERGY DUCT - OUTSIDE BUILDING.

REV	REVISION	DATE	DR	CHK	APP	APP	DO NOT SCALE	SCALE	SIZE	DWG NO.	REV
								REFERENCE	D	SK6387-1	-