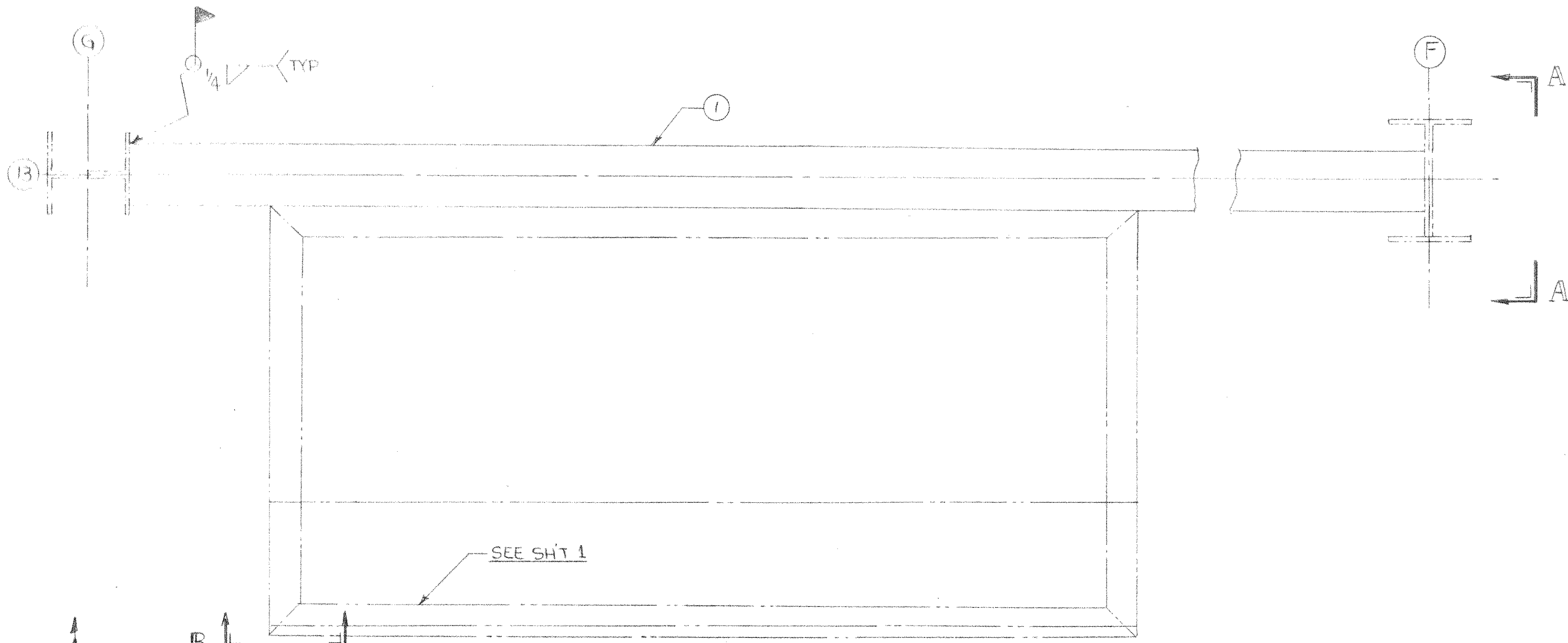
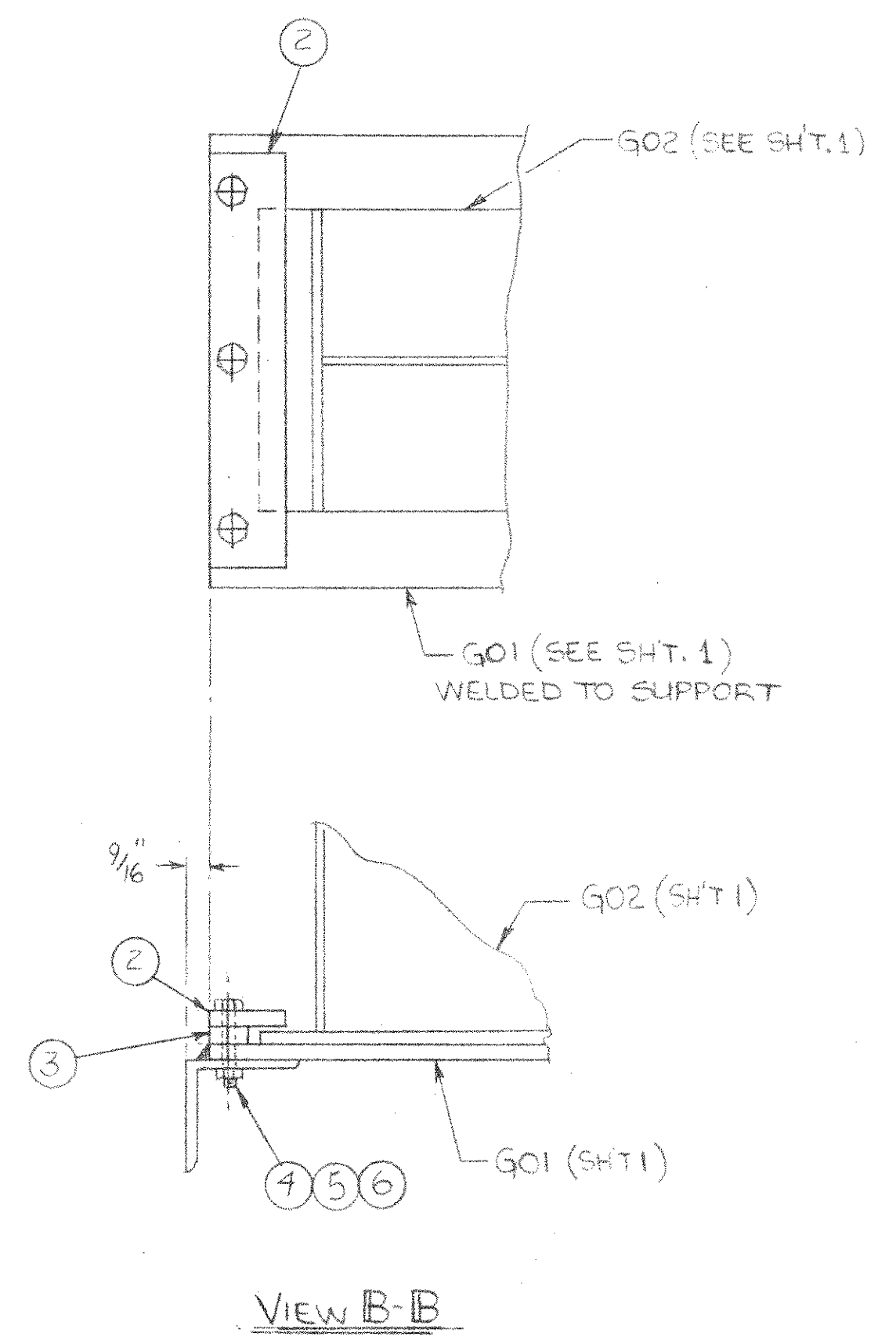
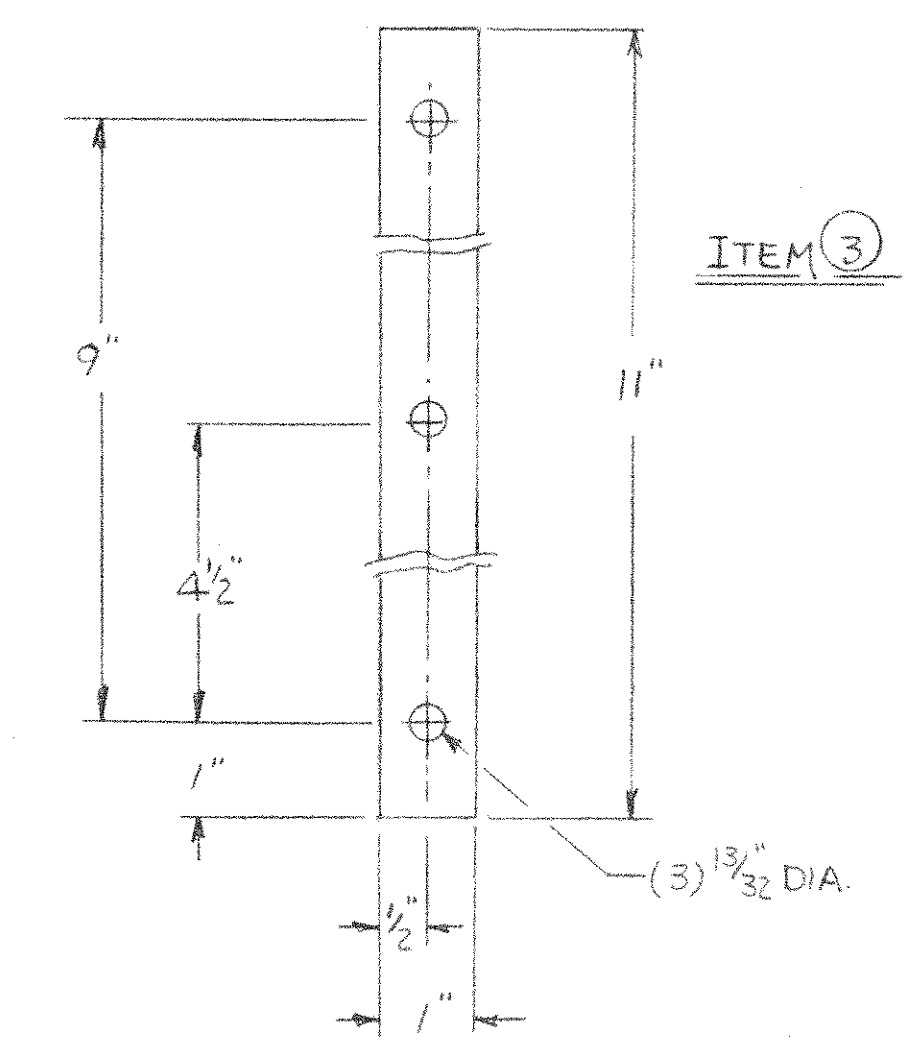
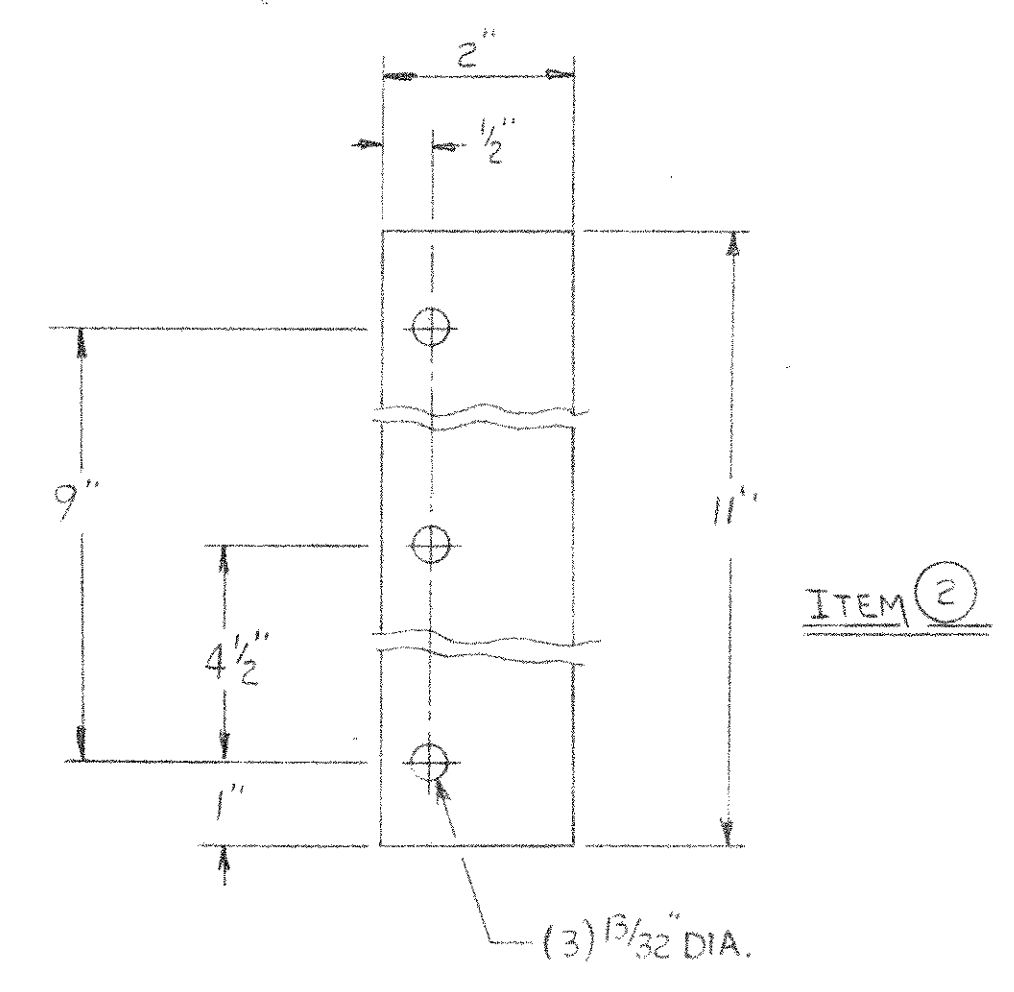
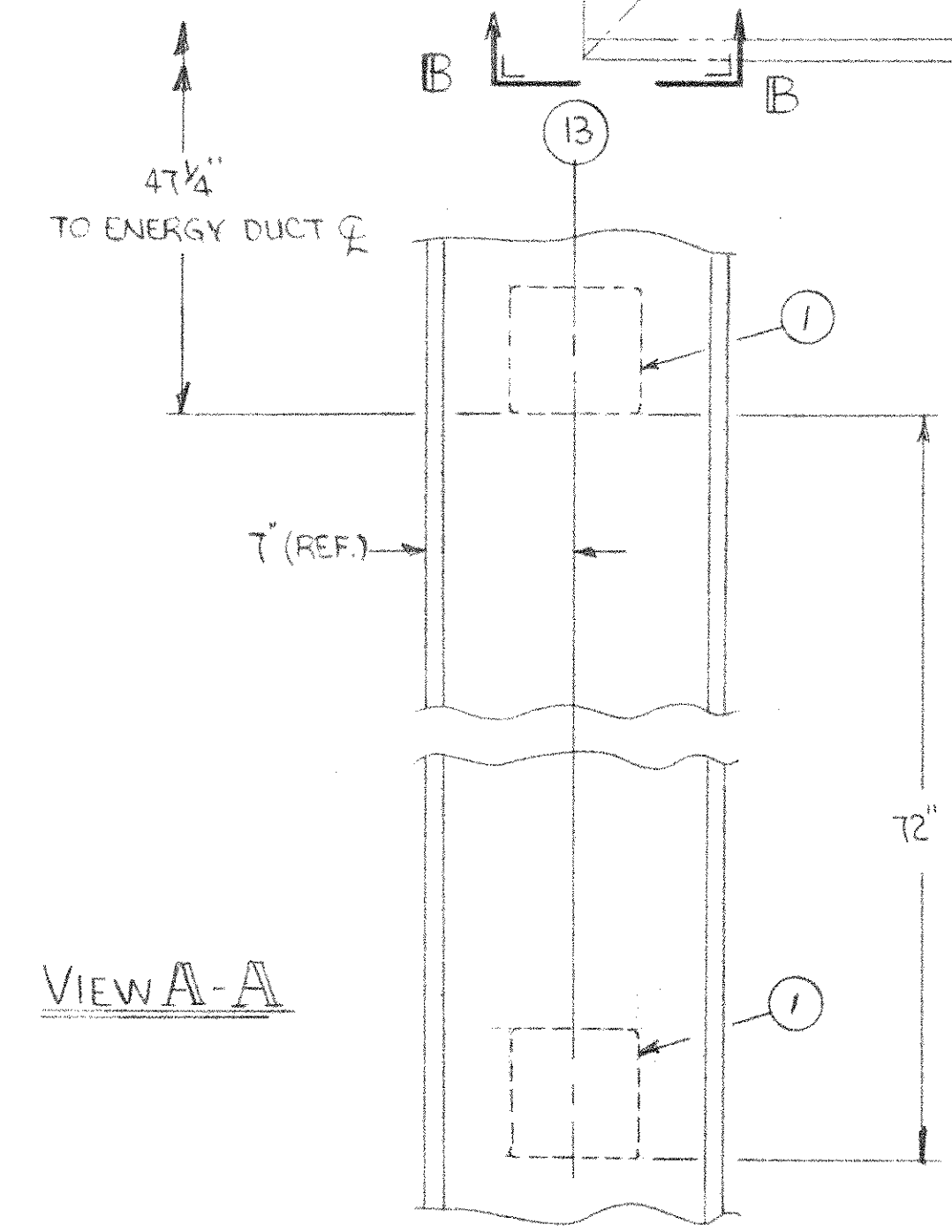


GROUP	ITEM	PART	DESCRIPTION
02	01		
2	1		6" X 6" TUBING
2	2		3/8" X 2" F.B.X. 11" LG.
2	3		1/2" X 2" F.B.X. 11" LG.
6	4		HEX. HD. CS. 3/8" X 1 1/2" LG.
6	5		HEX. NUT 3/8"-16
6	6		LOCK WASHER 3/8"



NOTE:  
 1) A PORTION OF THE BLOCK WALL AT COLUMN LINE (G) MUST BE REMOVED TO PROVIDE CLEARANCE FOR THE 6"X6" TUBING.



**Field Issued**  
 Date: JUN 10 1987  
 AUTH. SIG. NLC 9 DATE 6/9/87

**ISSUED FOR CONSTRUCTION**

TOLERANCES:  
 NORMAL ± 1/32  
 EXCEPT AS NOTED.  
 HOLE LOCATION DIMENSIONS MUST BE HELD TO ± 1/64  
 TOLERANCES MUST NOT BE ACCUMULATIVE.

PROJ NAME	HARFORD	PROJ NO.	P4805	GRP.	B/M	D/L	NEXT HIGHER ASSY
-----------	---------	----------	-------	------	-----	-----	------------------

THIS DRAWING IS THE PROPERTY OF CONSUMAT SYSTEMS, INC. AND IS TO BE USED ONLY FOR PRODUCING ITEMS ON SPEC FOR CONSUMAT SYSTEMS, INC. SUBJECT TO RETURN UPON DEMAND AND IS NOT TO BE PRINTED, PHOTOCOPIED, REPRODUCED, LOANED OR USED IN ANY WAY WITHOUT WRITTEN PERMISSION OF CONSUMAT SYSTEMS, INC.

DR	RHH
DATE	6-3-87
CHK	
DATE	
APP	
APP	

**Consumat Systems, Inc.**  
 RICHMOND, VIRGINIA U.S.A.

TITLE: TRANSITION SUPPORT  
 ENERGY DUCT - OUTSIDE BUILDING

SCALE: ~ SIZE: D DWG NO.: SK6387-1  
 REFERENCE: SHEET 2 OF 2

REV	REVISION	DATE	DR	CHK	APP	APP	DO NOT SCALE	REFERENCE
-----	----------	------	----	-----	-----	-----	--------------	-----------