

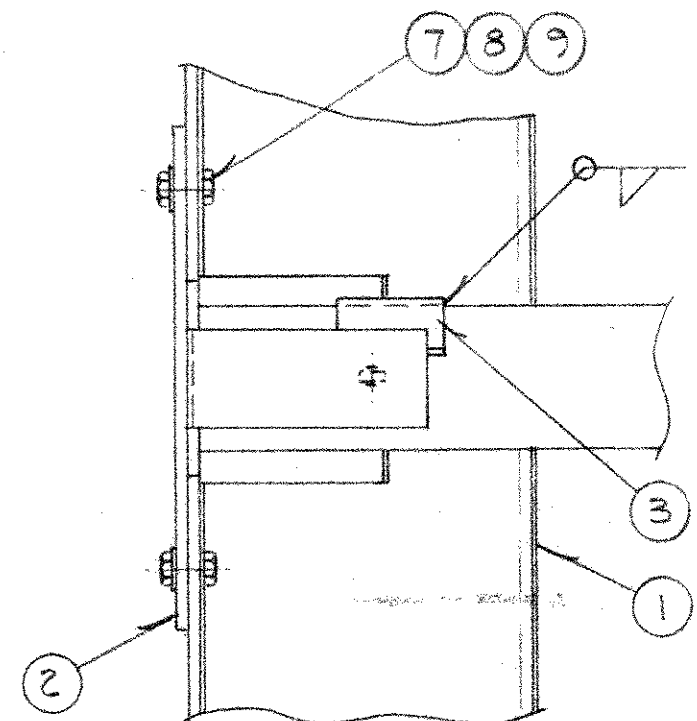
4

3

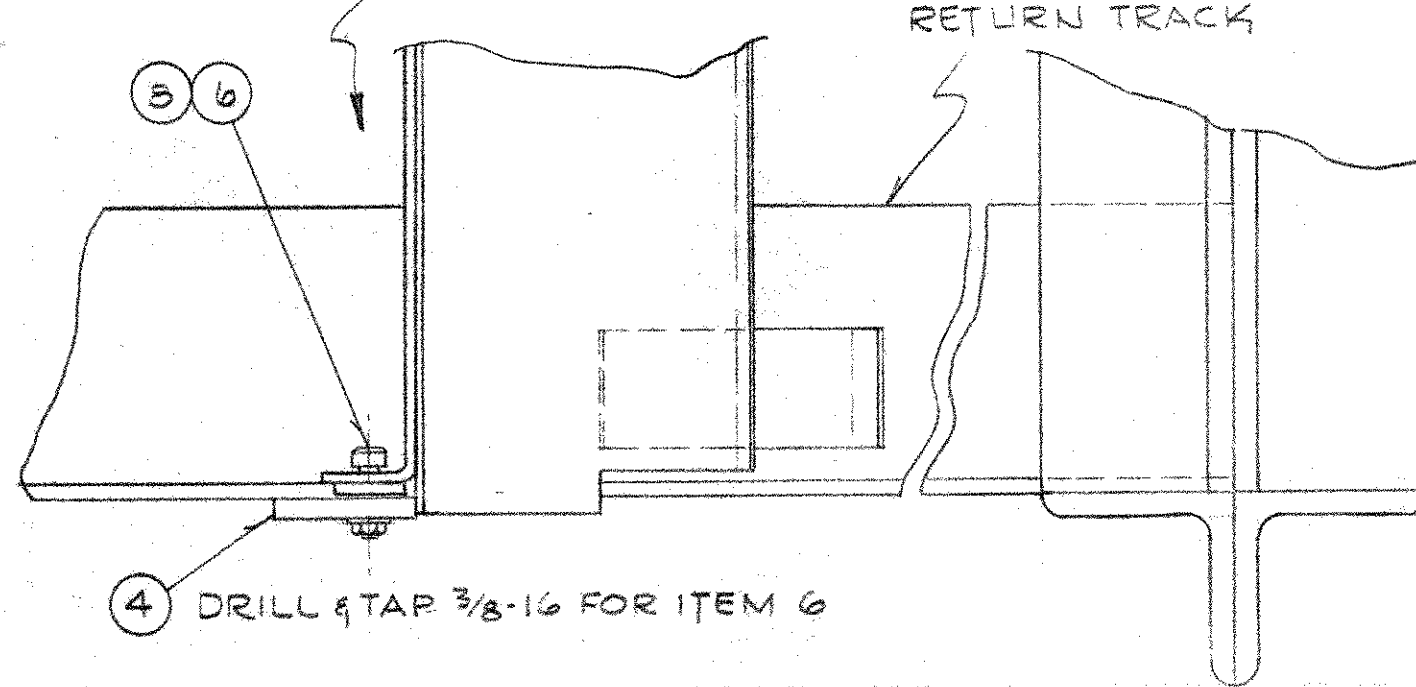
2

GROUP		PARTS LIST		
02	01	ITEM	PART	DESCRIPTION
		1	C22D-0049 GO1	FLIGHT FOLLOWER ASSY.
		2	C22D-0050 GO1	PLUNGER RELEASE ARM ASSY.
		3	B22E-0512 PO1	MOUNTING BRKT.-LIMIT SWITCH
		4		3/8 x 3 F.B. x 12
		5		MICRO SWITCH BZE6-2RN80
		6		1/2 x 5/8 x 3/8-16 SHOULDER BOLT
		7		3/8-16 x 1" HEX. BOLT
		8		3/8-16 HEX. NUT
		9		3/8 SPLIT SPRING LOCK WASHER

GROUP	DIM "A"
01	36"
02	84"

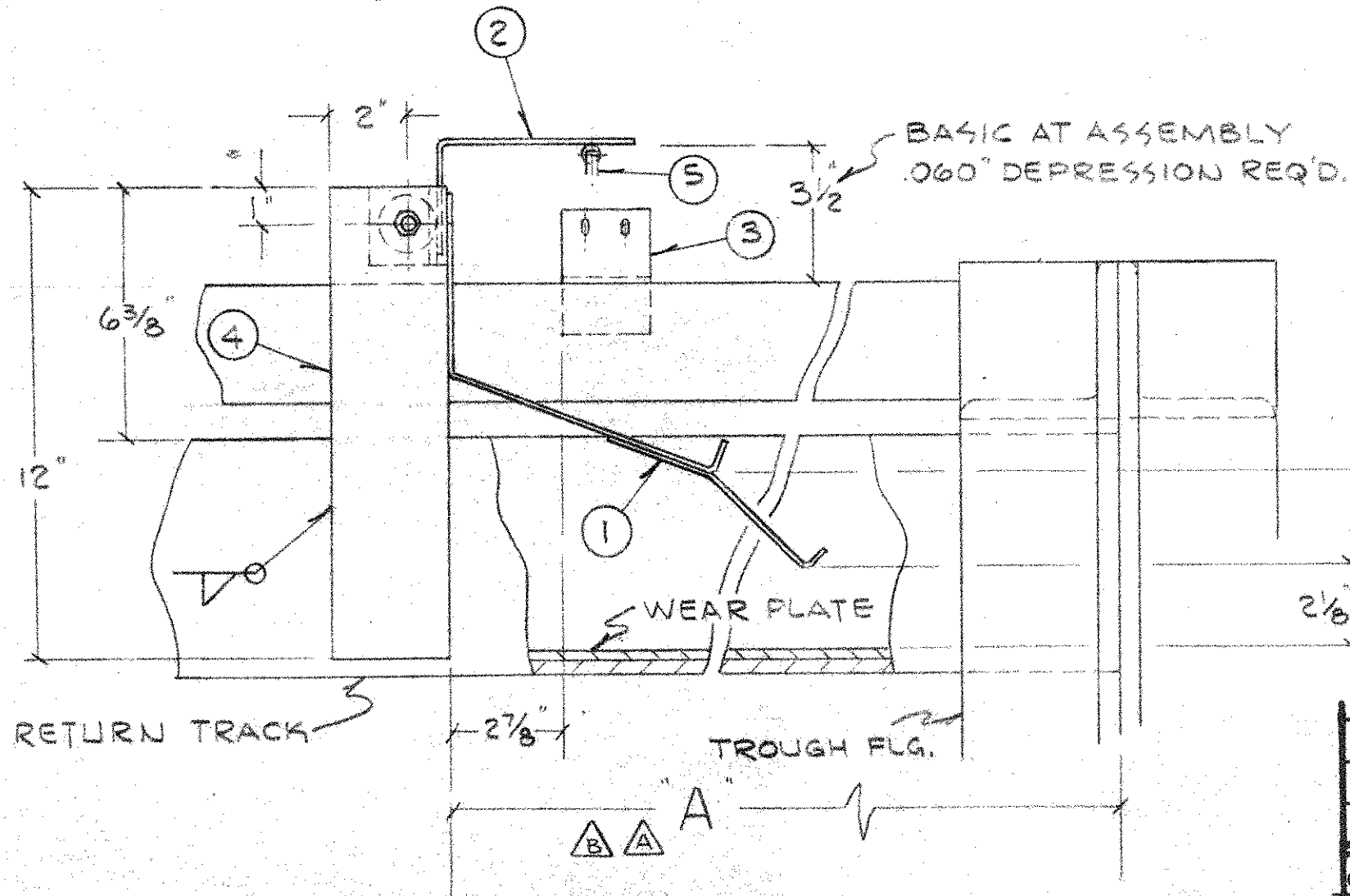


ASSEMBLY TYPICAL
BOTH SIDES



NOTES

▶ MATERIALS REMAIN THE SAME FOR ALL GROUPS, UNLESS OTHERWISE SPECIFIED - ONLY DIM. "A" WILL CHANGE.



FLIGHT TRAVEL →

CSI PROCESS SPEC NUMBER		4164 3501 D22-0010		
GROUP	B/M	D/L	NEXT HIGHER ASSY	

TROUGH LIMIT SWITCH TRIP ASSEMBLY



Consumat Systems, Inc.
RICHMOND, VIRGINIA U.S.A.

THIS DRAWING IS THE PROPERTY OF CONSUMAT SYSTEMS INC., AND IS TO BE USED ONLY FOR PRODUCING ITEMS ON ORDER FOR CONSUMAT SYSTEMS INC. SUBJECT TO RETURN UPON DEMAND AND IS NOT TO BE PRINTED, PHOTOGRAPHED, COPIED, REPRODUCED, LOANED OR USED IN ANY WAY WITHOUT WRITTEN PERMISSION OF CONSUMAT SYSTEMS INC.

B	DIM. 36 CHG TO "A" - G02 ADDED	7-17-86	EM	SCALE 3"=1'-0"	DRAWN EAS	DRAWING NO.
A	DIM. 36 WAS 30	3-28-86	EAS	DATE 3-13-86	CHK.	C-22D-0069
NO.	REVISION	DATE	BY	DO NOT SCALE	APPR.	SHEET OF

4

3

2

1