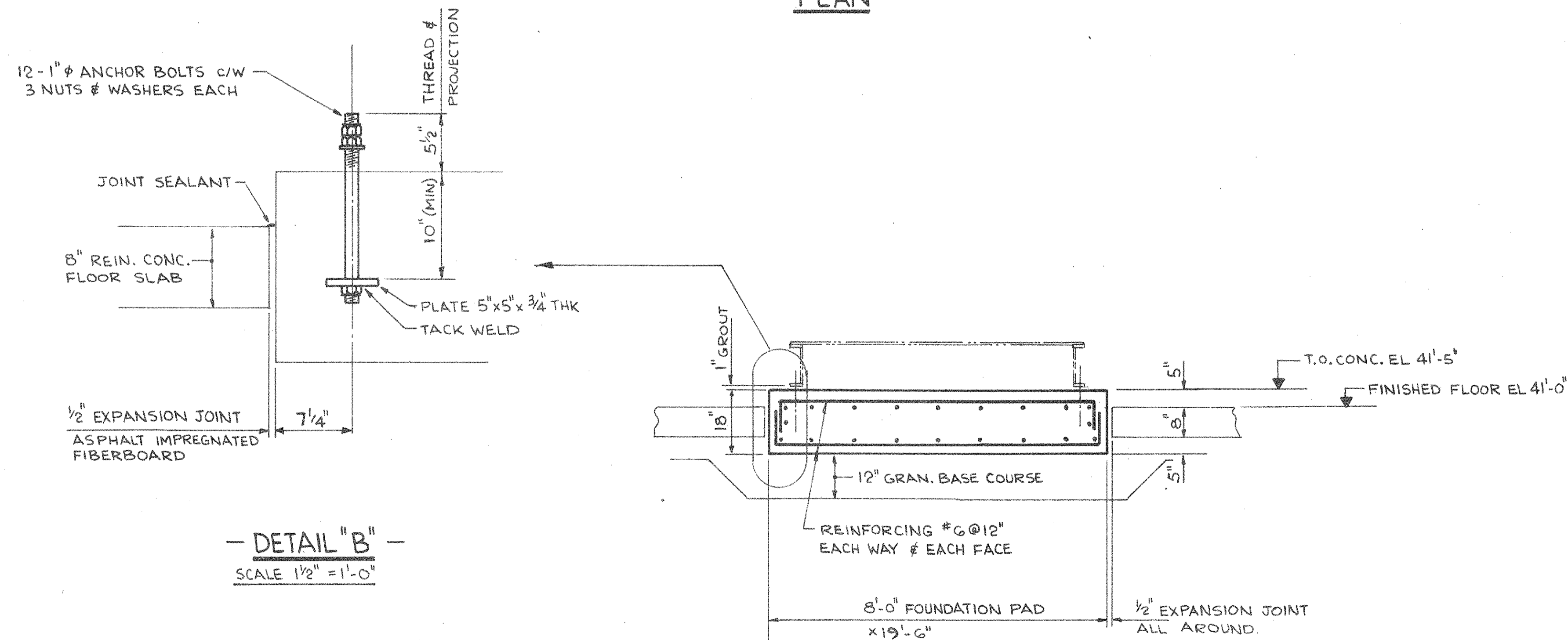


- PLAN -



- DETAIL "B" -
SCALE 1/2" = 1'-0"


- SECTION "A-A" -

TEMPORARY PERMIT NO. 771
TO PRACTICE ENGINEERING IN
THE STATE OF MARYLAND

W.P. LONDON AND ASSOCIATES LIMITED
CONSULTING ENGINEERS
NIAGARA FALLS

HARFORD COUNTY RESOURCE RECOVERY FACILITY - HARFORD COUNTY, MARYLAND

TURBINE GENERATOR FOUNDATION

 **Consumat Systems, Inc.**
RICHMOND, VIRGINIA U.S.A.

ISSUED FOR CONSTRUCTION	DEC 22/84	J.S.	SCALE 1/2" = 1'-0"	DRAWN J. SHANKS	DRAWING NO.
ORIGINAL TRANSFERRED TO CS.I. FOR COMPLETION.	DATE	BY	DO NOT SCALE	CHK. <i>[Signature]</i>	7624-0000-42D1-014
NO.	REVISION	DATE	BY	APPR.	SHEET 1 OF 1