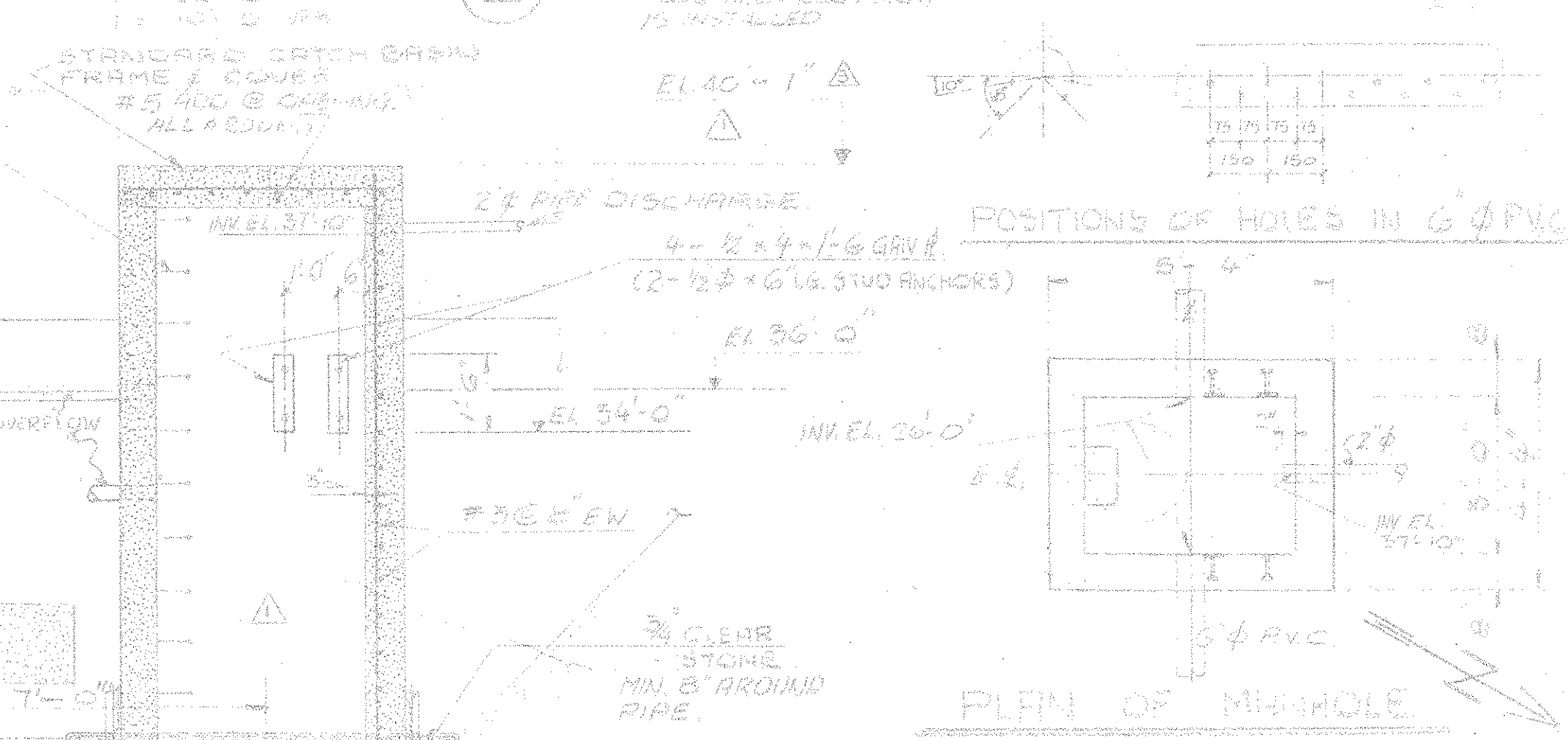
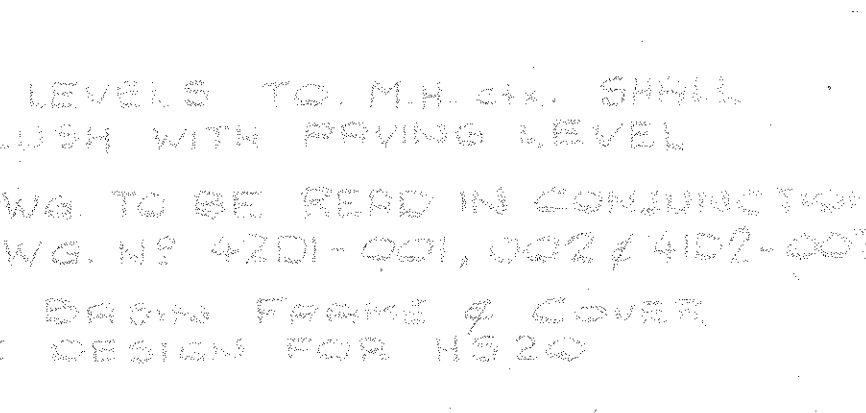


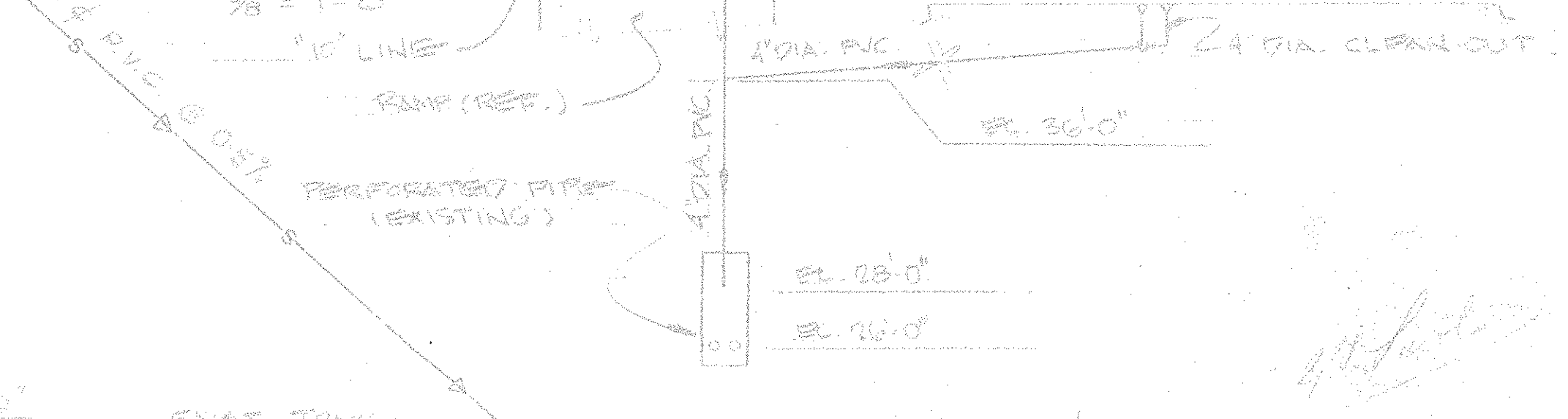
**SECTION**



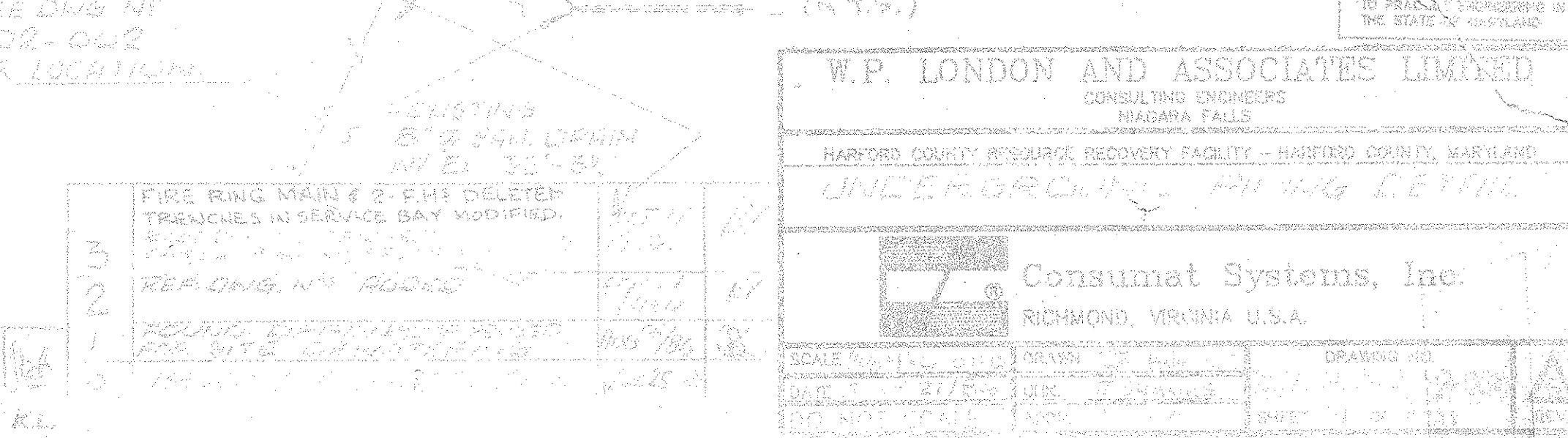
**PLAN OF MANHOLE**



**DETAIL A**



**SECTION C-C**



**P L A N**

**W.P. LONDON AND ASSOCIATES LIMITED**  
CONSULTING ENGINEERS  
NAGARA FALLS

HARFORD COUNTY RESOURCE RECOVERY FACILITY - HARFORD COUNTY, MARYLAND

**UNIFORM GRADING PLANING DETAIL**

**Consumat Systems, Inc.**  
RICHMOND, VIRGINIA U.S.A.

|                      |                |                 |
|----------------------|----------------|-----------------|
| SCALE: 1/8" = 1'-0"  | DATE: 11/10/82 | DRAWN: JPL      |
| DESIGNED: JPL        | CHECKED: JPL   | IN CHARGE: JPL  |
| PROJECT NO. 4201-001 | SHEET NO. 17   | TOTAL SHEETS 17 |

|   |           |      |    |
|---|-----------|------|----|
| 1 | REVISIONS | DATE | BY |
| 2 | REVISIONS | DATE | BY |
| 3 | REVISIONS | DATE | BY |

TO SCALE 1/8" = 1'-0" TO FIELD ENGINEERING IN THE STATE OF MARYLAND

SEE DWG NS 4201-002 FOR LOCATION

FOR M.H. DETAILS SEE CORR. DWG. NS 4201-011

SEE DETAIL 'A' FOR MANHOLE & DWS 4201-016

INVE. EL. 22'-0"

FF. EL. 30'-10"

FF. EL. 30'-1"

FF. EL. 32'-10"

FF. EL. 33'-0"

FF. EL. 39'-0"

FF. EL. 47'-0"

FF. EL. 45'-0"

FF. EL. 45'-0"

FF. EL. 45'-0"

FF. EL. 45'-0"

FF. EL. 45'-0"

FF. EL. 45'-0"

FF. EL. 45'-0"

FF. EL. 45'-0"

FF. EL. 45'-0"

FF. EL. 45'-0"