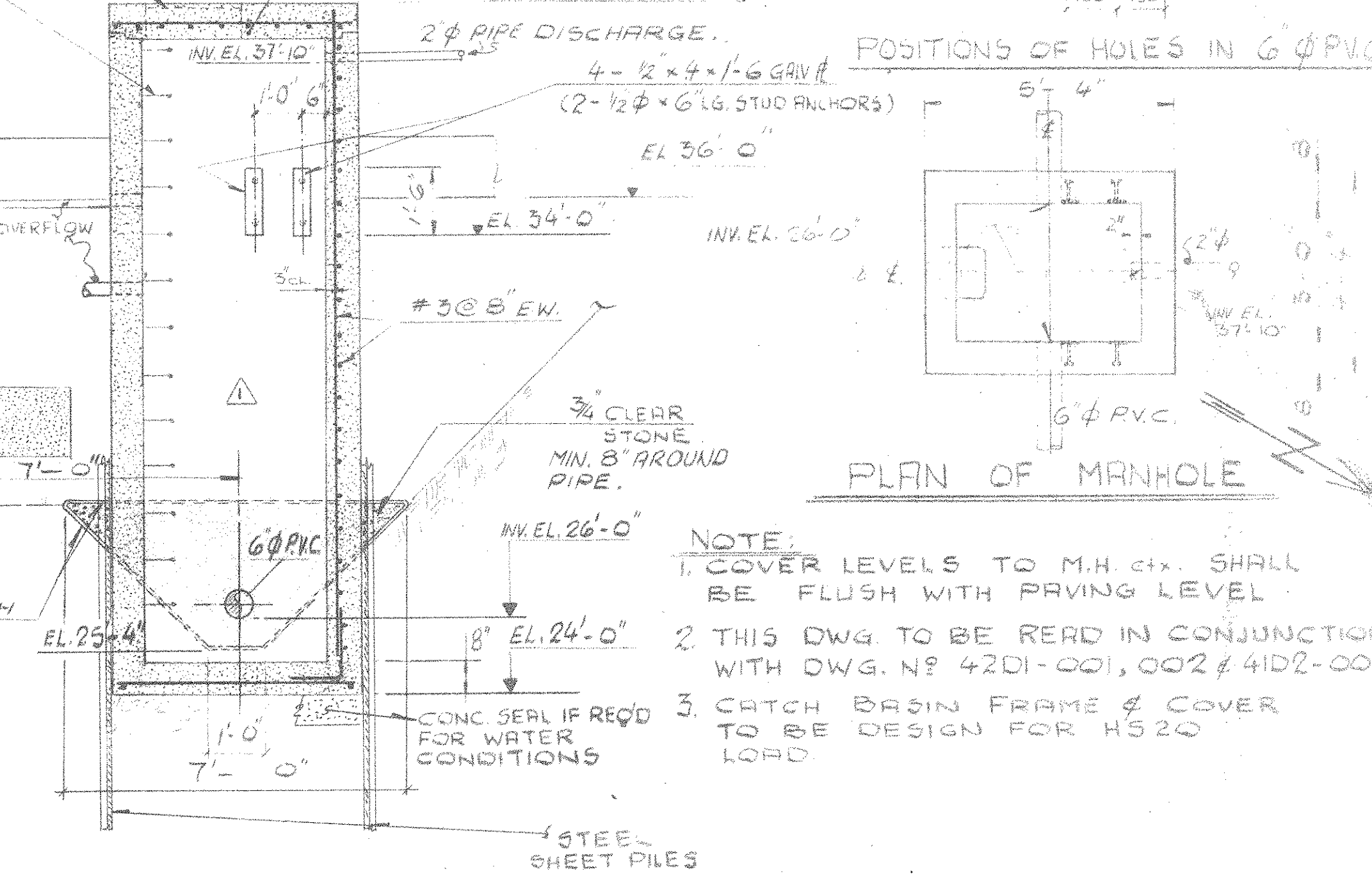


SECTION

1" = 20'-0" HOR.
1" = 10'-0" VER.



PLAN OF MANHOLE

- NOTE:**
- COVER LEVELS TO M.H. CH. SHALL BE FLUSH WITH PAVING LEVEL.
 - THIS DWG. TO BE READ IN CONJUNCTION WITH DWG. NO. 4201-001, 002 & 4102-007.
 - CATCH BASIN FRAME & COVER TO BE DESIGN FOR H520 LOAD.

P L A N

NO.	REVISION	DATE	BY
3	FIRE RING MAIN & 2-FHS DELETED TRENCHES IN SERVICE BAY MODIFIED.	8/27/86	KL
2	REF DWG. NO. ADDED	8/11/86	KL
1	FOUND. DRAINAGE IMPROVED FOR SITE DEWATERING	8/11/86	KL
0	ISSUED FOR CONSTRUCTION	8/11/86	KL

TEMPORARY PERMIT NO. 771 TO PRACTICE ENGINEERING IN THE STATE OF MARYLAND

W.P. LONDON AND ASSOCIATES LIMITED
CONSULTING ENGINEERS
NIAGARA FALLS

HARFORD COUNTY RESOURCE RECOVERY FACILITY - HARFORD COUNTY, MARYLAND

UNDERGROUND PIPING DETAIL

Consumat Systems, Inc.
RICHMOND, VIRGINIA U.S.A.

SCALE: 1/8" = 1'-0" DRAWN: H. HARRIS DATE: JULY 21/86 CHECK: J. SHANKS 1624-0000-4102-008 SHEET 01 OF 01