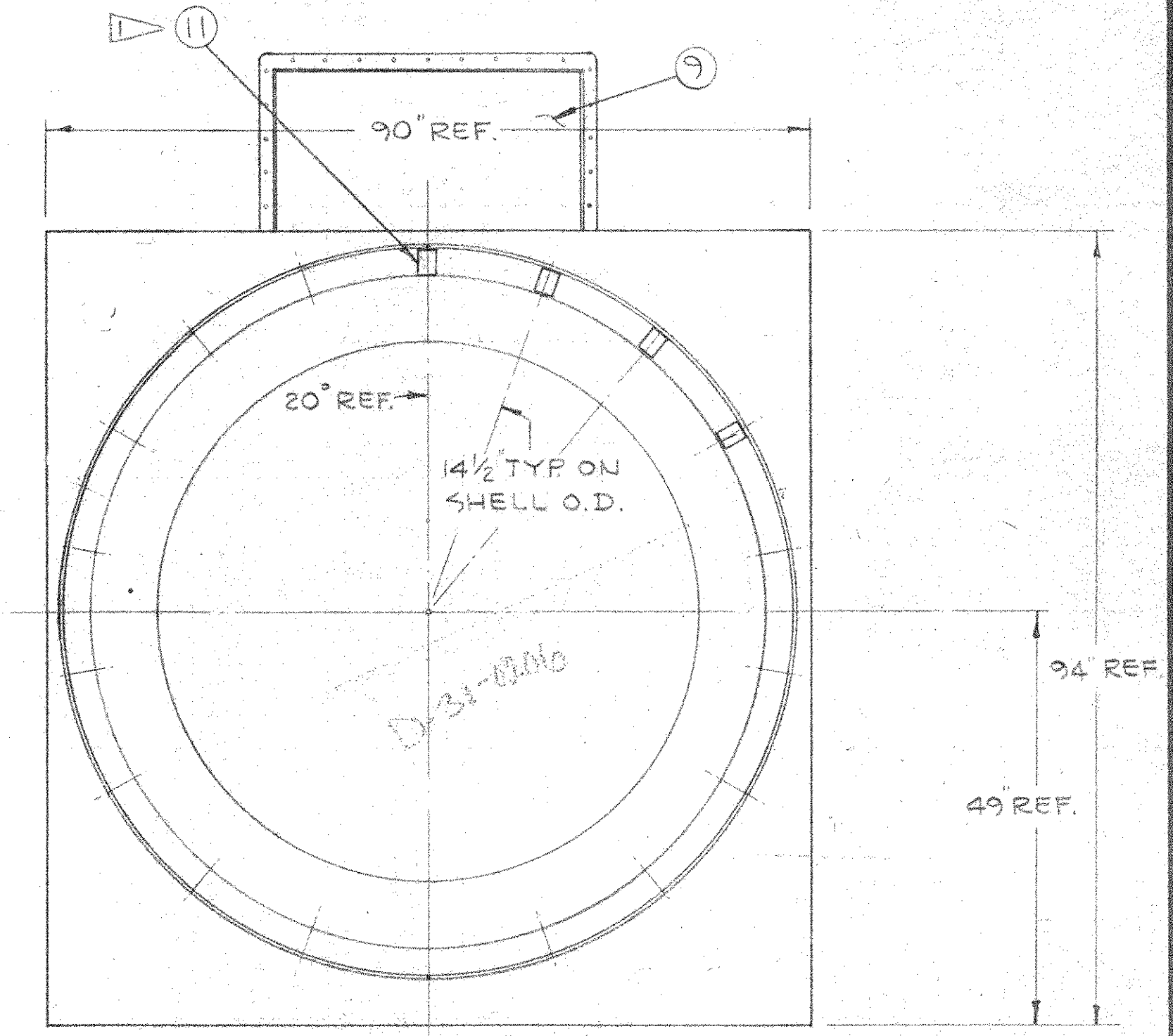


GROUP		PARTS LIST		
02	01	ITEM	PART	DESCRIPTION
1	1	D31-0188	G02	UPPER CHAMBER - SHELL No. 1
1	2	D31-0189	G01	UPPER CHAMBER - SHELL No. 2
2	3	C31G-0111	P01	SHROUD DETAIL - U/C
2	4		P02	
2	5		P03	
2	6		P04	
5	7	D35G-0139	G01	U/C BLOWER DAMPER
1	8	C31G-0112	G01	INLET DUCT SECT. - SHELL No. 2
2	9	C31G-0106	G01	CROSS-OVER DUCT SECTION
5	10			1/4 x 3 F.B. x 135 7/16
3/6	11			1/4 x 2 F.B. x 2 7/8
2	12			4" O.D. x 16 GA. x 3 TUBE
1	13	C24-0194	G01	VERTICAL DUCT
1	14	C24-0195	G01	TRANSITION SECTION - VERT. DUCT
1	15	C31G-0114	G01	DISCHARGE SECTION
2	16			6" FLEXIBLE JOINT - 29 x 38 7/8
1	17			6" FLEXIBLE JOINT - 38 1/2 DIA.
1	18			UNITARY FAN BASE
1	19			TWIN CITY FAN - SIZE 365
1	20			INLET AIR VALVE
2	21	B-28C-0128	G02	CLAMP BAR (ROUND)
2	22	B-28C-0061	G04	CLAMP BAR (RECTANGULAR)

- ▷ (1) ROW - (13) REQD. FOR SHELL No. 1
- ▷ (1) ROW - (18) REQD. FOR SHELL No. 2
- ▷ LOCATE ON SHELL AS SHOWN
- ▷ (2) ROLL TO 43" INSIDE - (2) REQ'D EACH END OF SHELL
- ▷ (3) BURNER NOT SHOWN
- ▷ (4) JOINT FASTENERS CALLED OUT ON BOLT SCHEDULE
- ▷ (5) USE DAMPER HOUSING ONLY - INCLUDE INSPECTION PANEL



SECTION A-A

SHIPPING ID. NO. _____

UNIT NO. _____ COMPONENT PART ID. NO. _____

HARFORD	4805	01	4498		
CSI PROCESS SPEC	NUMBER	GROUP	B/M	D/L	NEXT HIGHER ASSY

T/C FAN UPPER CHAMBER ASSEMBLY
 SIZE 365 W/SHROUD & DUCT SECTIONS CS-3000E

Consumat Systems, Inc.
 RICHMOND, VIRGINIA U.S.A.

THIS DRAWING IS THE PROPERTY OF CONSUMAT SYSTEMS INC. AND IS TO BE USED ONLY FOR PRODUCING ITEMS ON ORDER FOR CONSUMAT SYSTEMS INC. SUBJECT TO RETURN UPON DEMAND AND IS NOT TO BE PRINTED, PHOTOGRAPHED, COPIED, REPRODUCED, LOANED OR USED IN ANY WAY WITHOUT WRITTEN PERMISSION OF CONSUMAT SYSTEMS INC.

C	ADDED SHIPPING ID. NOS	11-17-86	DMH	SCALE 3/4"=1'-0"	DRAWN EAS4	DRAWING NO.
B	SH. 2 ITEMS 13 THRU 22 ADDED	9-19-86	DMH	DATE 7-24-86	CHK ZENI 9/23/86	D-31-0206
A	ADDED ITEM 9	8-15-86	DMH	DO NOT SCALE	APPR.	SHEET 1 OF 2
NO.	REVISION	DATE	BY			REV.